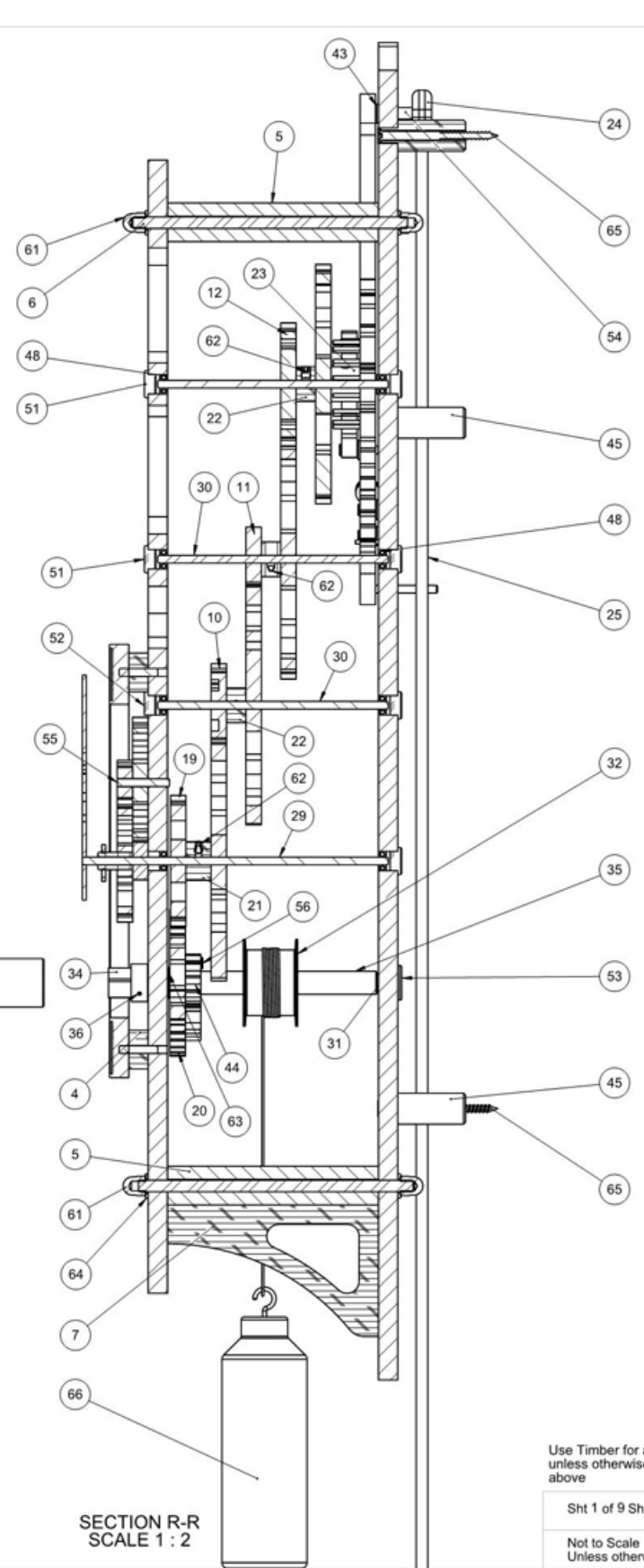


DETAIL C  
SCALE 1 : 2



SECTION R-R  
SCALE 1 : 2

Use Timber for all item unless otherwise stated above

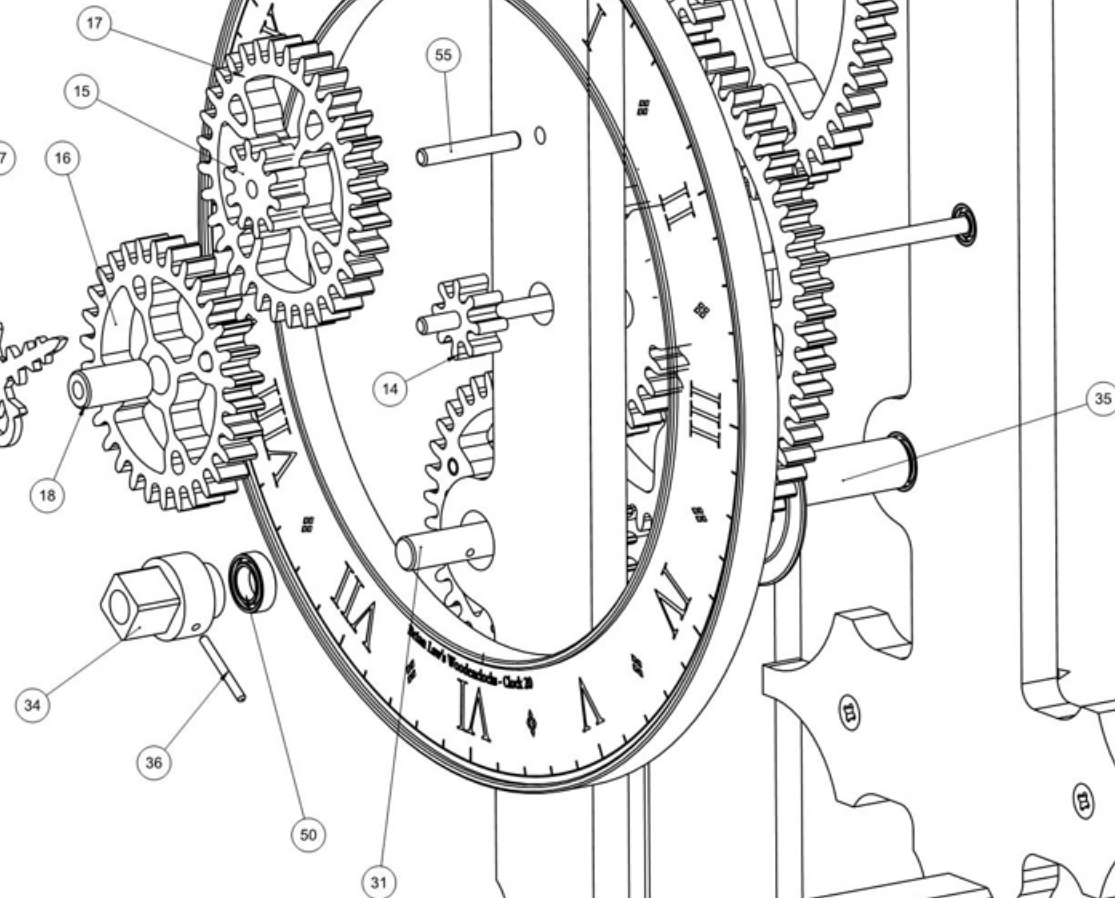
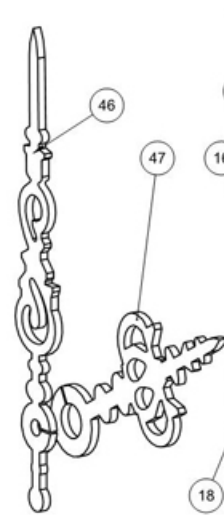
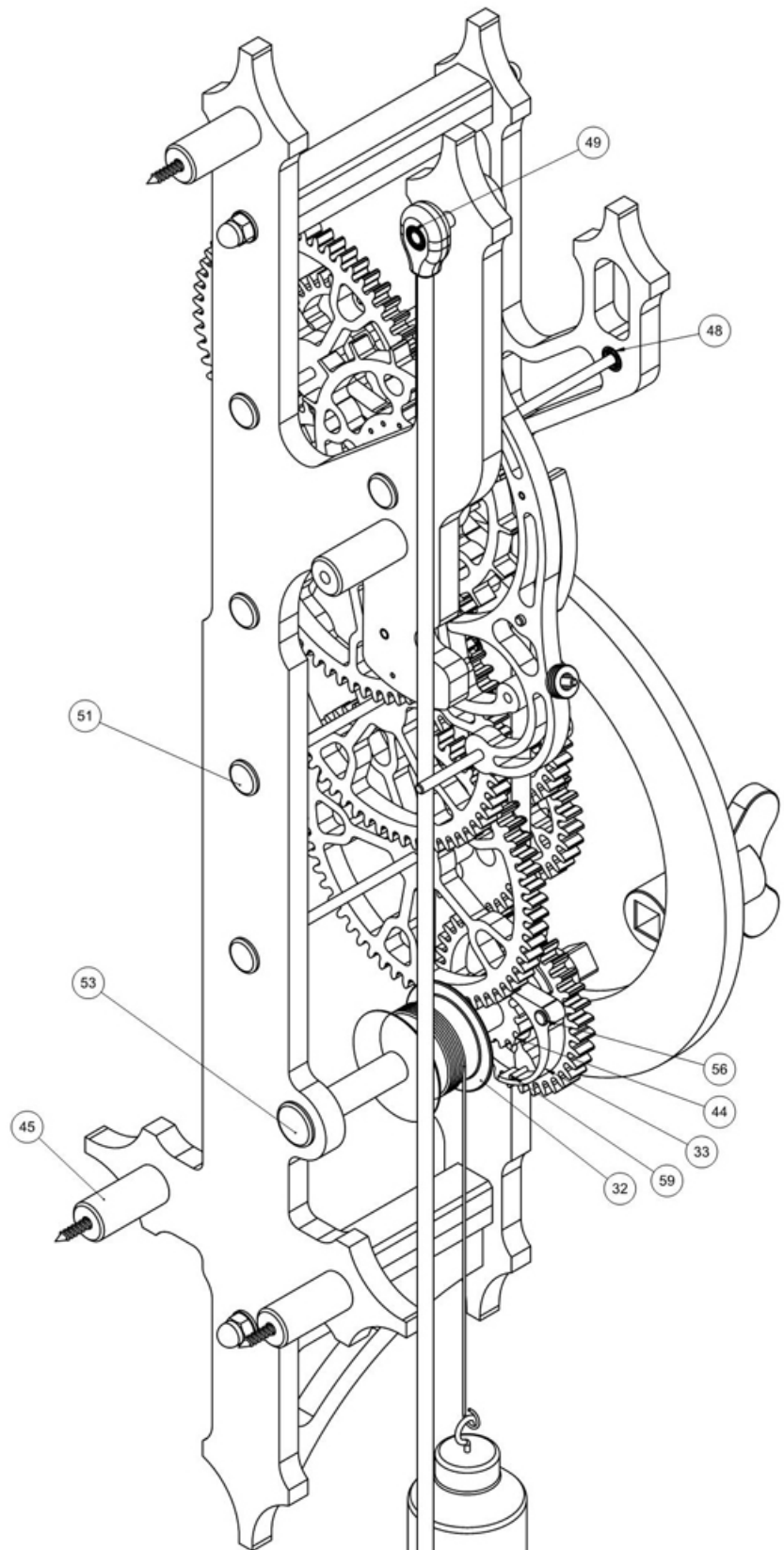
Sht 1 of 9 Shts A2  
Not to Scale Unless otherwise stated

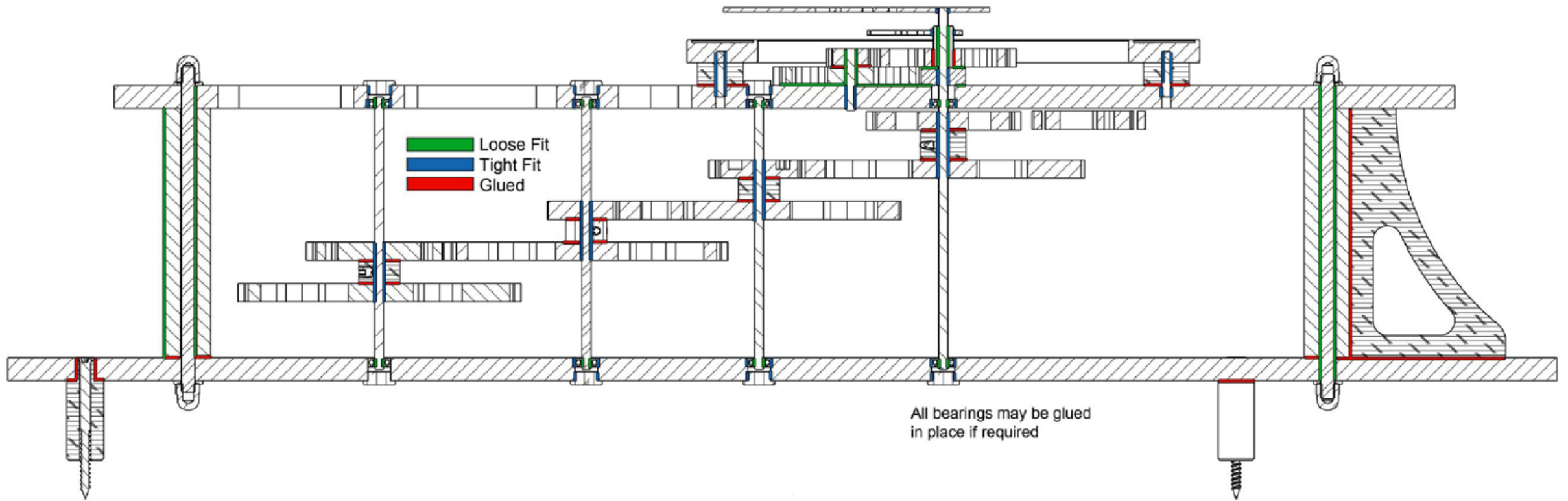
| ITEM NO. | PART NUMBER                     | DESCRIPTION              | QTY. |
|----------|---------------------------------|--------------------------|------|
| 1        | Clock 20-Back Frame             | Wood 10mm thk            | 1    |
| 2        | Clock 20-Front Frame            | Wood 10mm thk            | 1    |
| 3        | Clock 20-Dial                   | Wood 10mm thk            | 1    |
| 4        | Clock 20-Dial-Spacer            | Wood 10mm thk            | 2    |
| 5        | Clock 20-Frame Spacer           | Wood                     | 2    |
| 6        | Clock 20-Threaded rod           | Stainless Steel M6       | 2    |
| 7        | Clock 20-Brace                  | Wood 10mm thk            | 1    |
| 8        | Clock20-Escape wheel            | Wood 8mm thk             | 1    |
| 9        | Clock 20-Gears-60 Teeth         | Wood 8mm thk             | 4    |
| 10       | Clock 20-Gears-20 Teeth         | Wood 8mm thk             | 1    |
| 11       | Clock 20-Gears-15 Teeth         | Wood 8mm thk             | 1    |
| 12       | Clock 20-Gears-30 Teeth         | Wood 8mm thk             | 1    |
| 13       | Clock 20-Gears-12 Teeth         | Wood 8mm thk             | 1    |
| 14       | Clock 20-Hour Gears-8 Teeth     | Wood 8mm thk             | 1    |
| 15       | Clock 20-Hour Gears-10 Teeth    | Wood 8mm thk             | 1    |
| 16       | Clock 20-Hour Gears-30 Teeth    | Wood 8mm thk             | 1    |
| 17       | Clock 20-Hour Gears-32 Teeth    | Wood 8mm thk             | 1    |
| 18       | Clock 20-Hour Tube              | Wood                     | 1    |
| 19       | Clock 20-Winder Gears-32 Teeth  | Wood 8mm thk             | 1    |
| 20       | Clock 20-Winder Gears-36 Teeth  | Wood 8mm thk             | 1    |
| 21       | Clock 20-Gear Spacer 1          | Wood                     | 1    |
| 22       | Clock 20-Gear Spacer 2          | Wood                     | 3    |
| 23       | Clock 20-Gear Spacer 3          | Wood                     | 1    |
| 24       | Clock 20-Pendulum Pivot Block   | Wood 10mm                | 1    |
| 25       | Clock 20-Pendulum Rod           | Carbon Fible tube 6x4x1m | 1    |
| 26       | Clock 20-Pendulum Rod Insert    | Brass Ø6                 | 1    |
| 27       | Clock 20-Pendulum Bob-Nut       | Brass Ø19                | 1    |
| 28       | Clock 20-Pendulum Bob           | Wood and Brass           | 1    |
| 29       | Clock 20-Shaft Main             | Silver Steel Ø4          | 1    |
| 30       | Clock 20-Shaft                  | Silver Steel Ø4          | 4    |
| 31       | Clock 20-Winder Shaft           | Silver Steel Ø4          | 1    |
| 32       | Clock 20-Drum                   | Wood                     | 1    |
| 33       | Clock 20-Pawl                   | Wood 8mm thk             | 1    |
| 34       | Clock 20-Key Drive Stub         | Wood                     | 1    |
| 35       | Clock 20-Winder Spacer          | Wood                     | 1    |
| 36       | Clock 20-Winder Pin             | Silver Steel Ø2          | 1    |
| 37       | Clock 20-Gravity Arm            | Wood 8mm thk             | 1    |
| 38       | Clock 20-Lifting Lever          | Wood 8mm thk             | 1    |
| 39       | Clock 20-Catch                  | Wood 8mm thk             | 1    |
| 40       | Clock 20-Trigger                | Wood 8mm thk             | 1    |
| 41       | Clock 20-Gravity arm pin        | Silver Steel Ø4          | 1    |
| 42       | Clock 20-Gravity arm pin-2      | Silver steel Ø4          | 1    |
| 43       | Clock 20-Escapement washer      | Brass or Delrin          | 5    |
| 44       | Clock 20-Ratchet                | Wood 8mm thk             | 1    |
| 45       | Clock 20-Wall Stand-off         | Wood                     | 4    |
| 46       | Clock 20-Minute Hand            | HIPS or ABS 2mm thk      | 1    |
| 47       | Clock 20-Hour Hand              | HIPS or ABS 2mm thk      | 1    |
| 48       | Clock 20-Bearing Ø4mmxØ10mmx4mm | Ø4mmxØ10mmx4mm           | 10   |
| 49       | Clock 20-Bearing 6-10-3         | Ø6mmxØ10mmx3mm           | 4    |
| 50       | Clock 20-Bearing 8mm            | Ø8mmxØ14mmx4mm           | 2    |
| 51       | Clock 20-Bearing Plugs          | Wood                     | 8    |
| 52       | Clock 20 Bearing Plugs-2        | Wood                     | 1    |
| 53       | Clock 20 Bearing Plugs-Large    | Wood                     | 1    |
| 54       | Clock 20-Pivot Pin 6mm          | Silver Steel Ø6          | 1    |
| 55       | Clock 20-Pivot Pin 4-27         | Silver Steel Ø4          | 1    |
| 56       | Clock 20-Pivot Pin 6-cap        | Silver Steel Ø4          | 1    |
| 57       | Clock 20-Pivot Pin 5-cap        | Silver Steel Ø6          | 3    |
| 58       | Clock 20-Stop pin               | Silver Steel Ø3          | 1    |
| 59       | Clock 20-Pin 2x16               | Silver Steel Ø2          | 1    |
| 60       | Clock 20-Pin 2x22               | Silver Steel Ø2          | 16   |
| 61       | Domed nut-m6x1-6                | M6 Domed Nut             | 4    |
| 62       | Grub Screw-M5 x 6 grubscrew_    | M6 x 6 grub screw        | 5    |
| 63       | Washer 8mmx1                    | M6 x 1                   | 1    |
| 64       | Clock 20-M6 Washer              | Brass or Delrin          | 7    |
| 65       | Woodscrew_No4 5x60              | Brass                    | 3    |
| 66       | Clock 20-Weight                 | Weight approx 1.3Kg      | 1    |
| 67       | Clock 19-Weight Cord            | Ø1.2mm cord x 2mtrs      | 1    |
| 68       | Clock 20-Drum Pin 3x34          | Silver Steel Ø3          | 1    |
| 69       | Winder                          | Wood                     | 1    |

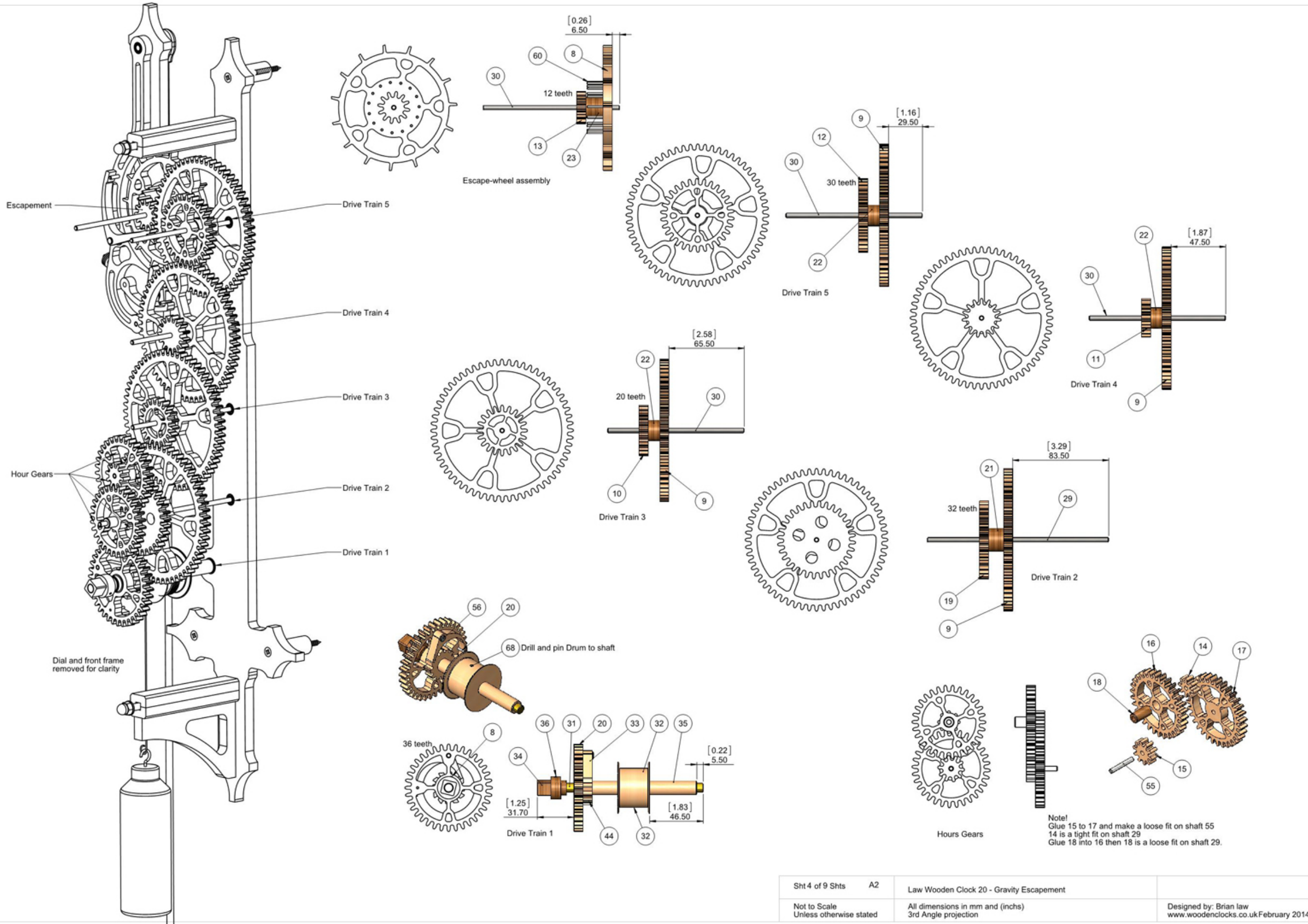
Law Wooden Clock 20 - Gravity Escapement

All dimensions in mm and (inchs)  
3rd Angle projection

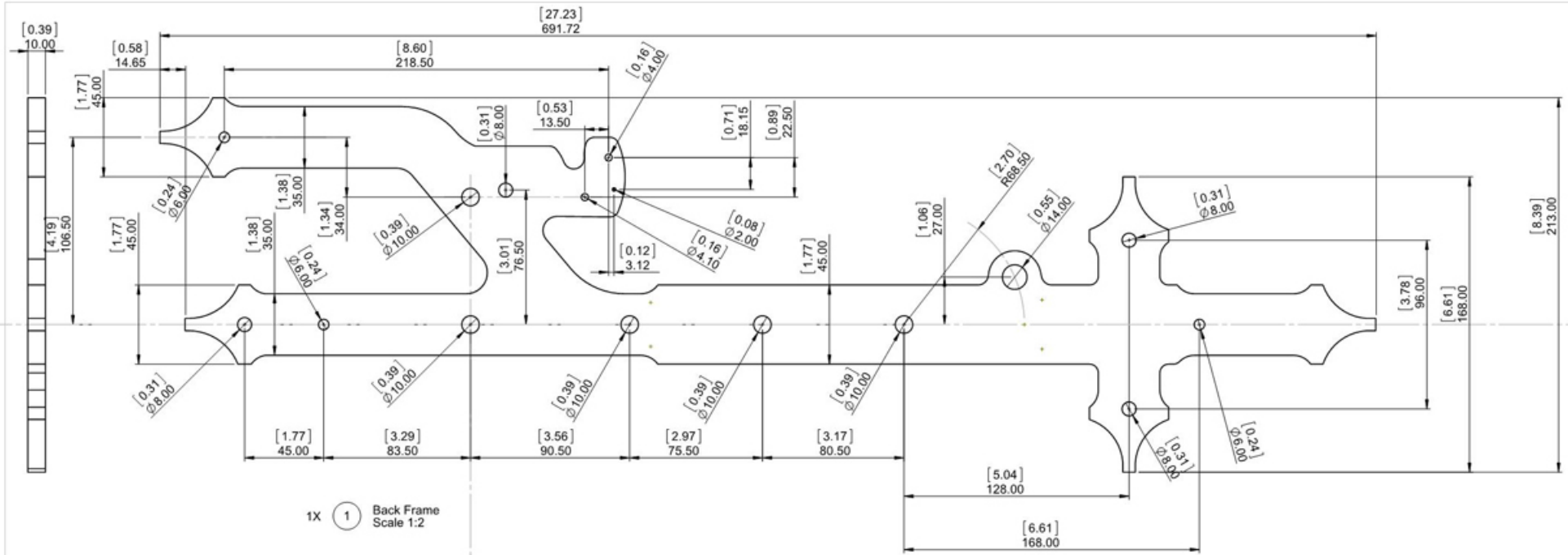
Designed by: Brian law  
www.woodenclocks.co.uk February 2014



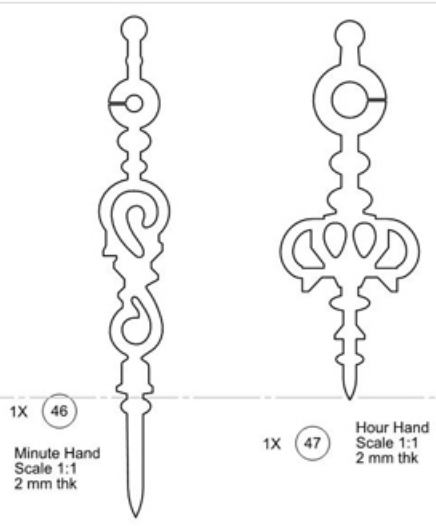




|   |    |   |  |
|---|----|---|--|
| Sht 4 of 9 Shts                         | A2 | Law Wooden Clock 20 - Gravity Escapement                  |  |
| Not to Scale<br>Unless otherwise stated |    | All dimensions in mm and (inches)<br>3rd Angle projection | Designed by: Brian law<br>www.woodenclocks.co.uk February 2014 |



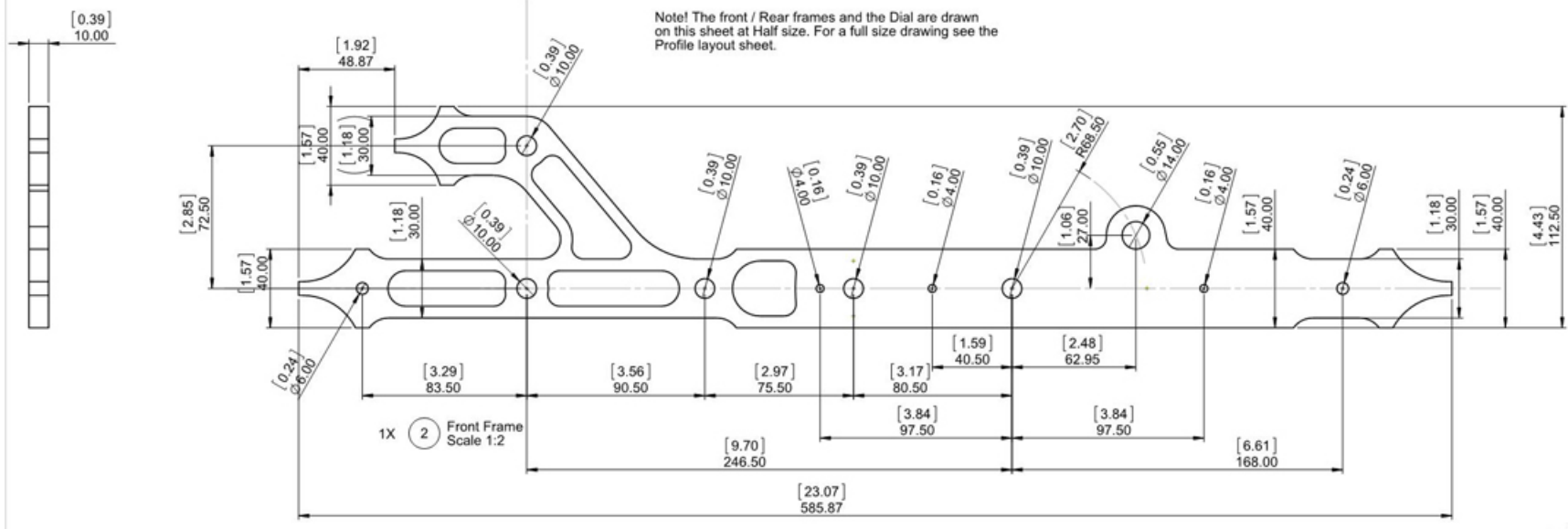
1X 1 Back Frame Scale 1:2



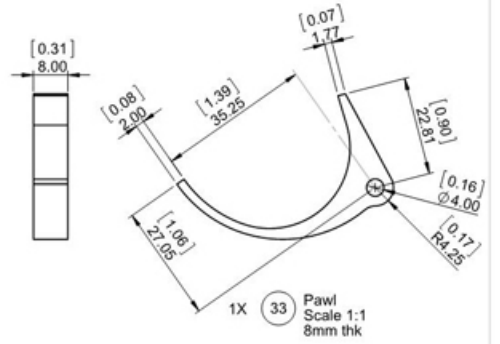
1X 46 Minute Hand Scale 1:1 2 mm thk

1X 47 Hour Hand Scale 1:1 2 mm thk

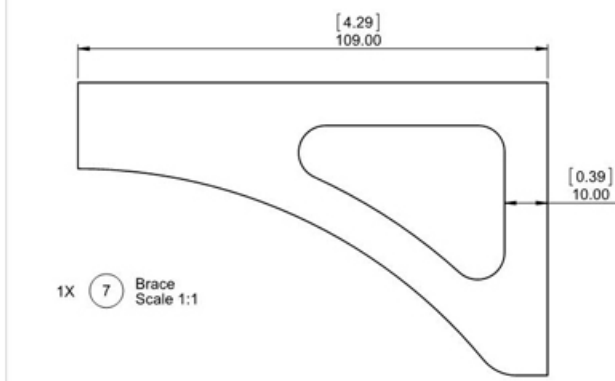
Note! The front / Rear frames and the Dial are drawn on this sheet at Half size. For a full size drawing see the Profile layout sheet.



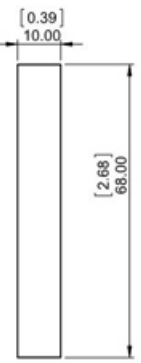
1X 2 Front Frame Scale 1:2



1X 33 Pawl Scale 1:1 8mm thk

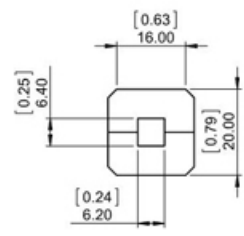


1X 7 Brace Scale 1:1

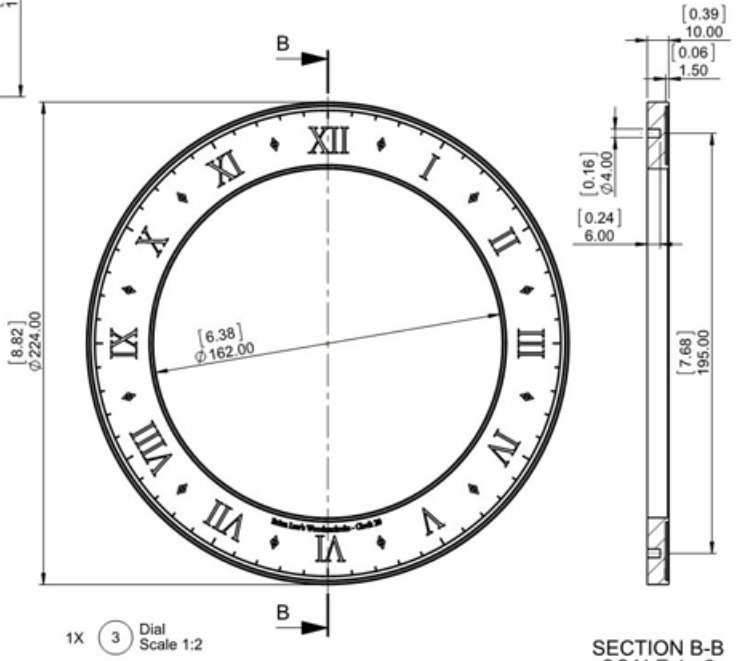


2X 5 Frame Spacer Scale 1:1

Note! Can be made in two halves and then glued together

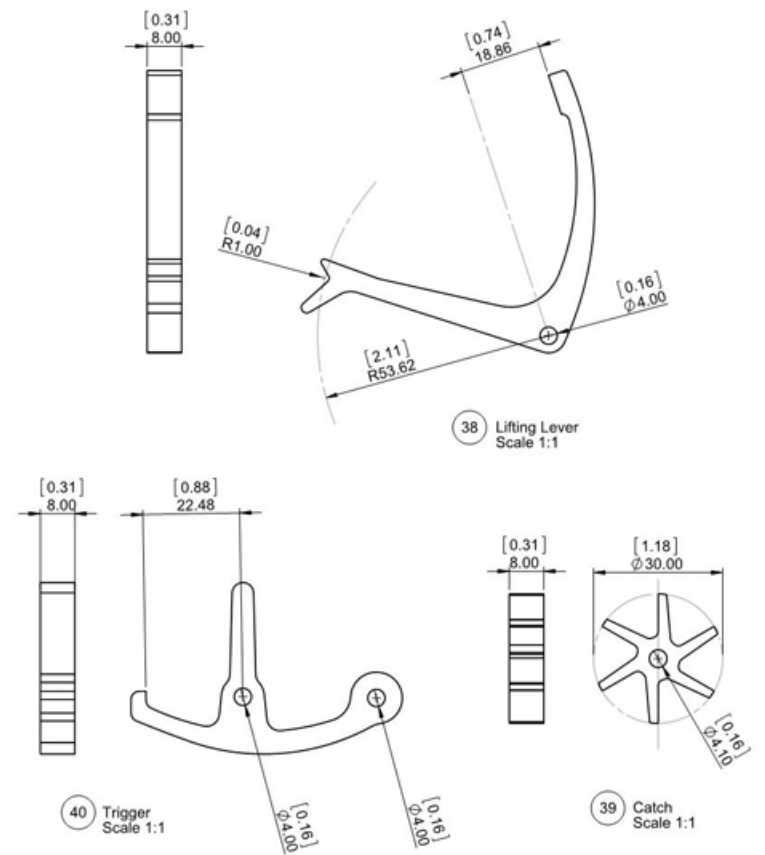
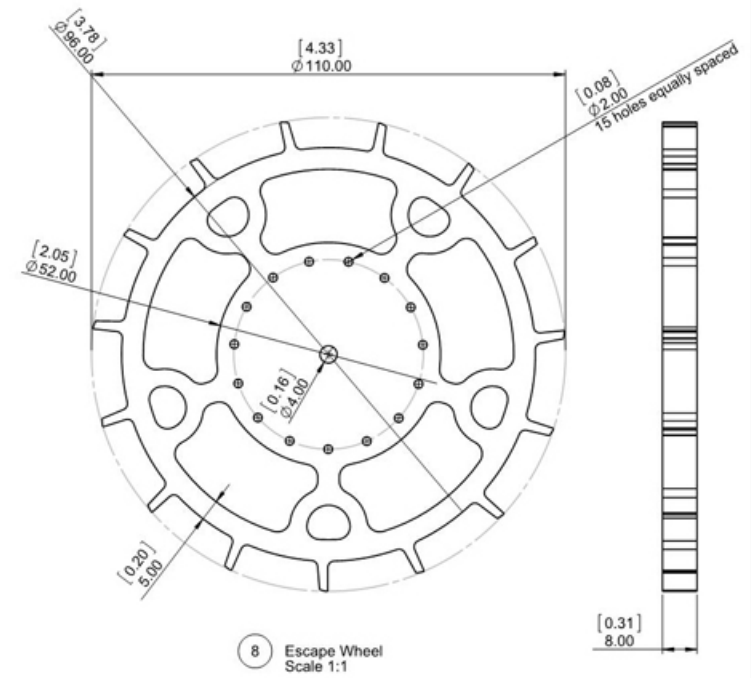
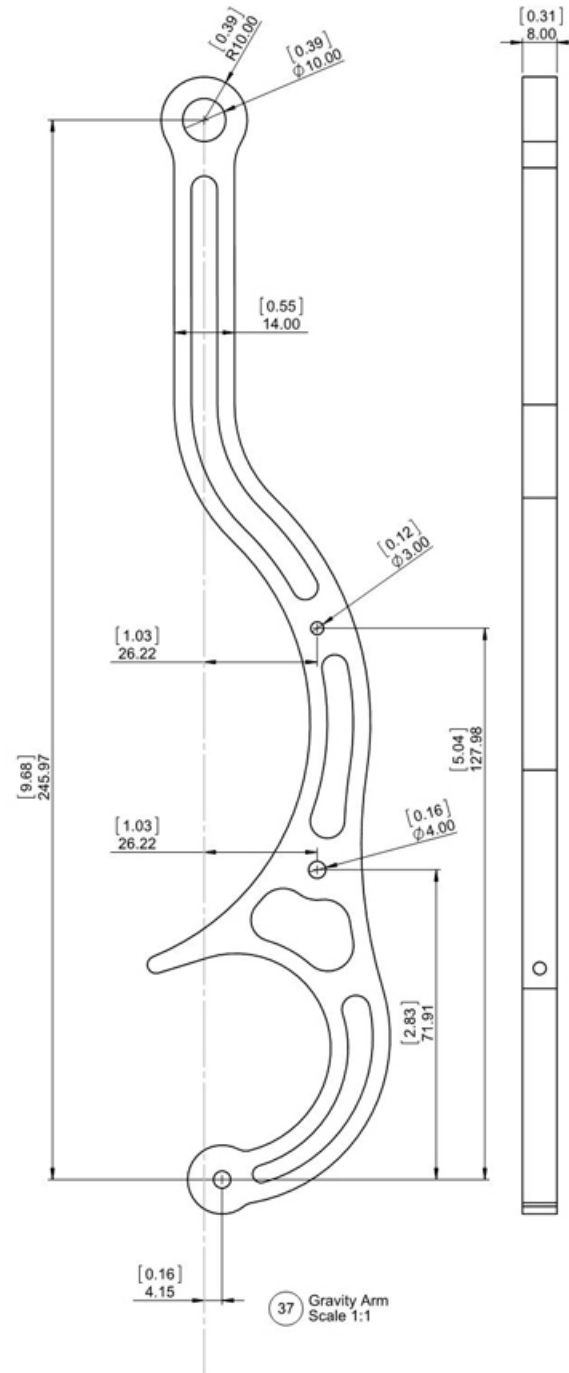
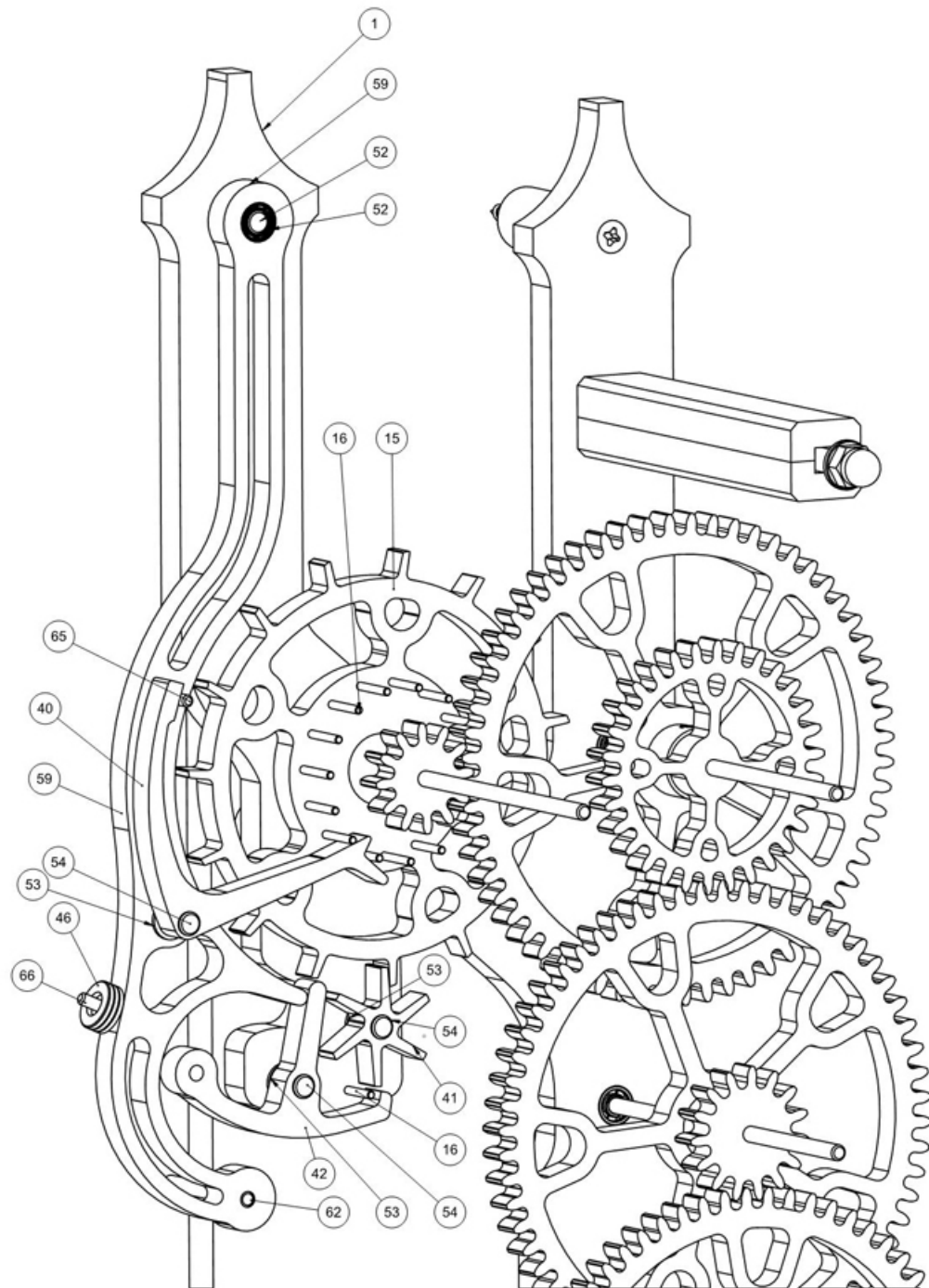


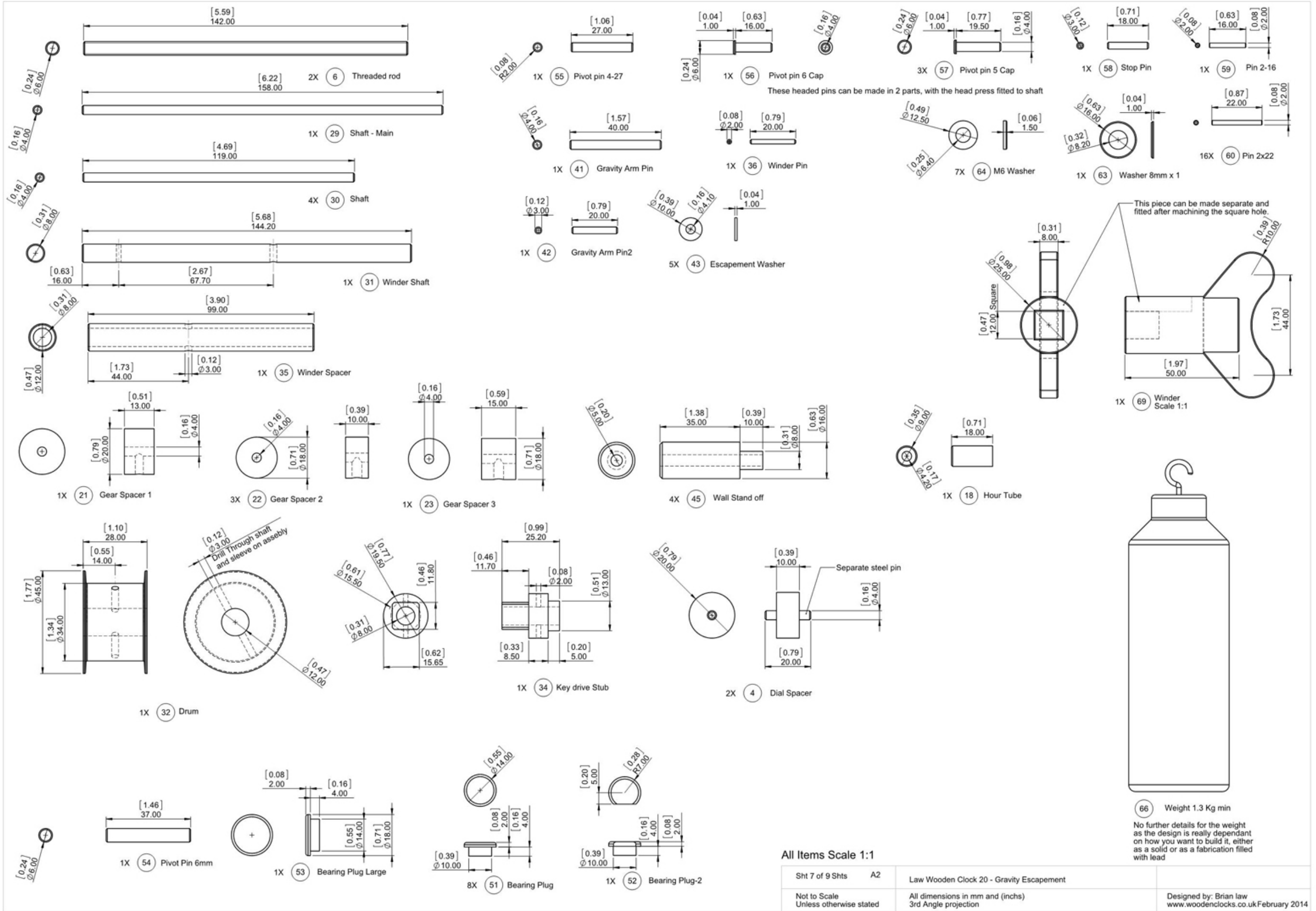
1X 3 Dial Scale 1:2



SECTION B-B SCALE 1:2

|   |    |   |  |
|---|----|---|--|
| Sht 5 of 9 Shts                         | A2 | Law Wooden Clock 20 - Gravity Escapement                  | Designed by: Brian law<br>www.woodenclocks.co.uk February 2014 |
| Not to Scale<br>Unless otherwise stated |    | All dimensions in mm and (inches)<br>3rd Angle projection |  |



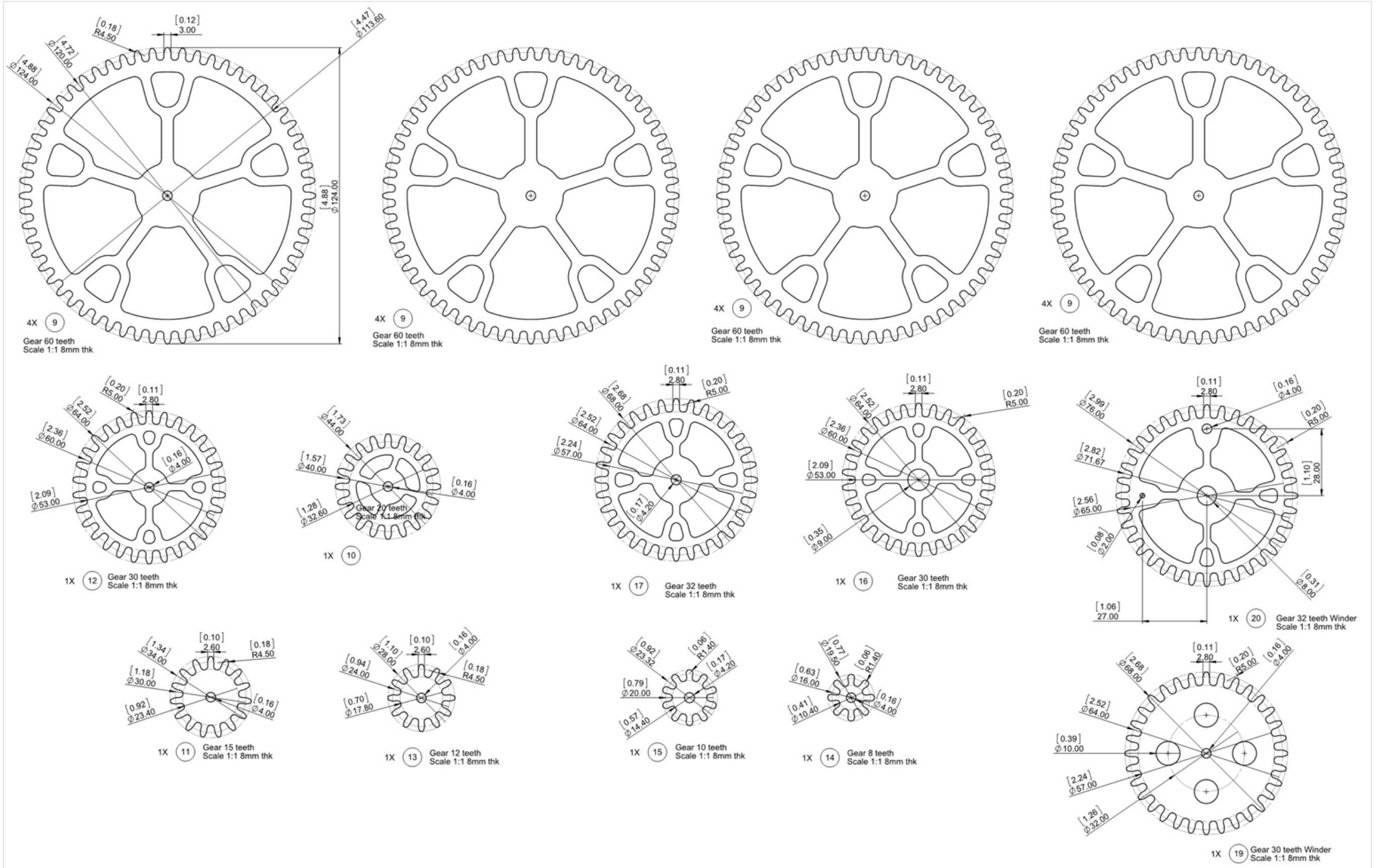


All Items Scale 1:1

|   |    |  |
|---|----|--|
| Sht 7 of 9 Shts                         | A2 | Law Wooden Clock 20 - Gravity Escapement                       |
| Not to Scale<br>Unless otherwise stated |    | All dimensions in mm and (inches)<br>3rd Angle projection      |
|   |    | Designed by: Brian law<br>www.woodenclocks.co.uk February 2014 |

66 Weight 1.3 Kg min

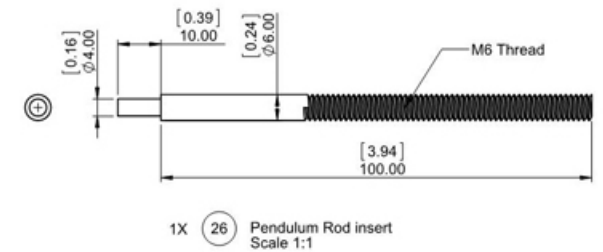
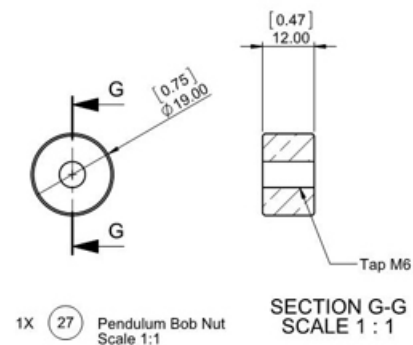
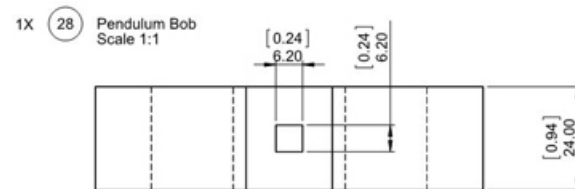
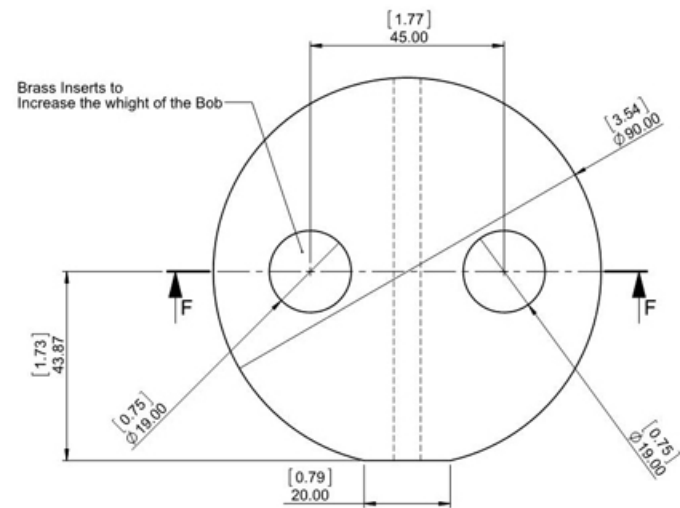
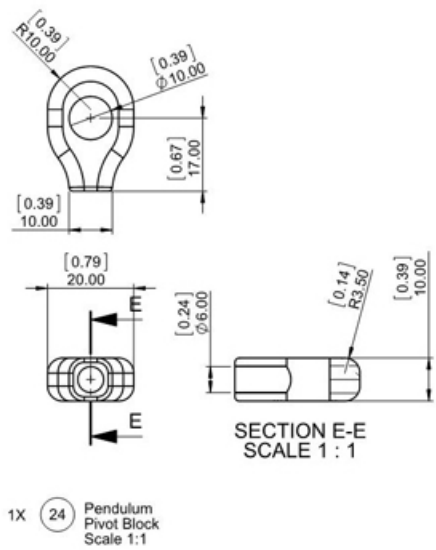
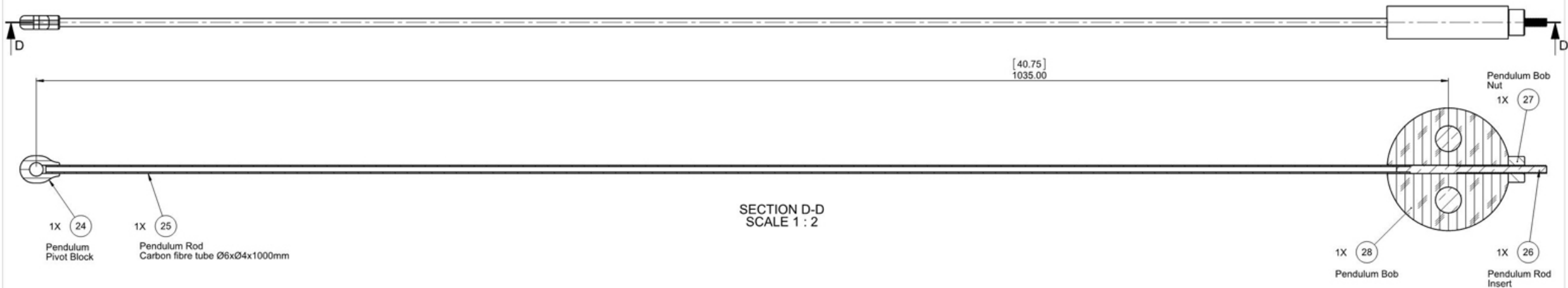
No further details for the weight as the design is really dependant on how you want to build it, either as a solid or as a fabrication filled with lead



**NB! All parts on this page are to scale 1:1 and are 8mm thick**

|   |    |   |  |
|---|----|---|--|
| Sht 8 of 9 Shts                         | A2 | Law Wooden Clock 20 - Gravity Escapement                  |  |
| Not to Scale<br>Unless otherwise stated |    | All dimensions in mm and (inches)<br>3rd Angle projection | Designed by: Brian law<br>www.woodenclocks.co.uk February 2014 |





NB! Pendulum Bob could be made in 2 halves.  
Split down the centre and use 2 12mm blanks.  
The split version of this is shown on the DXF Layout sheet.

|   |    |   |  |
|---|----|---|--|
| Sht 9 of 9 Shts                         | A2 | Law Wooden Clock 20 - Gravity Escapement                  |  |
| Not to Scale<br>Unless otherwise stated |    | All dimensions in mm and (inches)<br>3rd Angle projection | Designed by: Brian law<br>www.woodenclocks.co.uk February 2014 |