

- 7X 68
- 1X 60
- 1X 56
- 1X 57

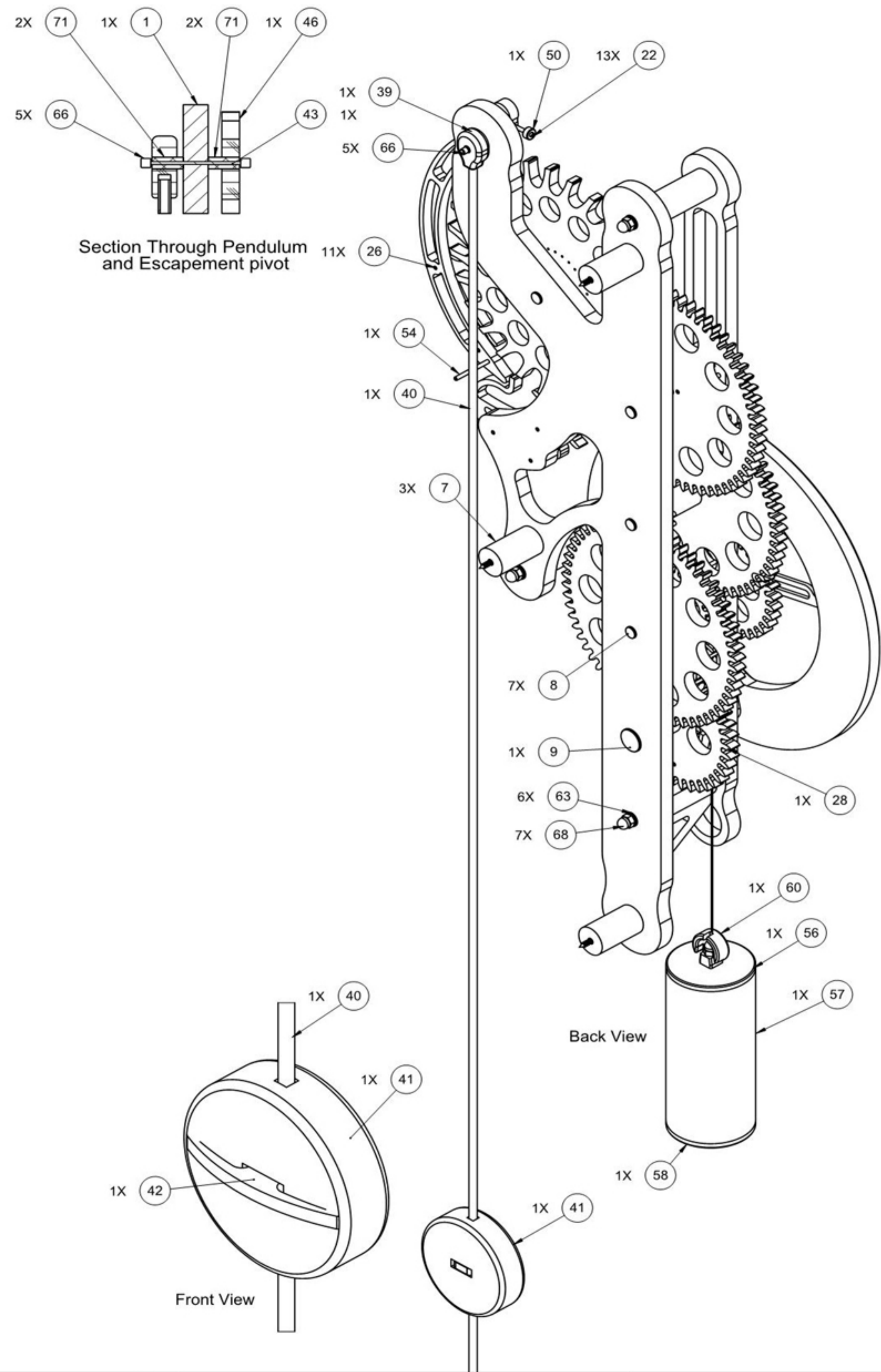
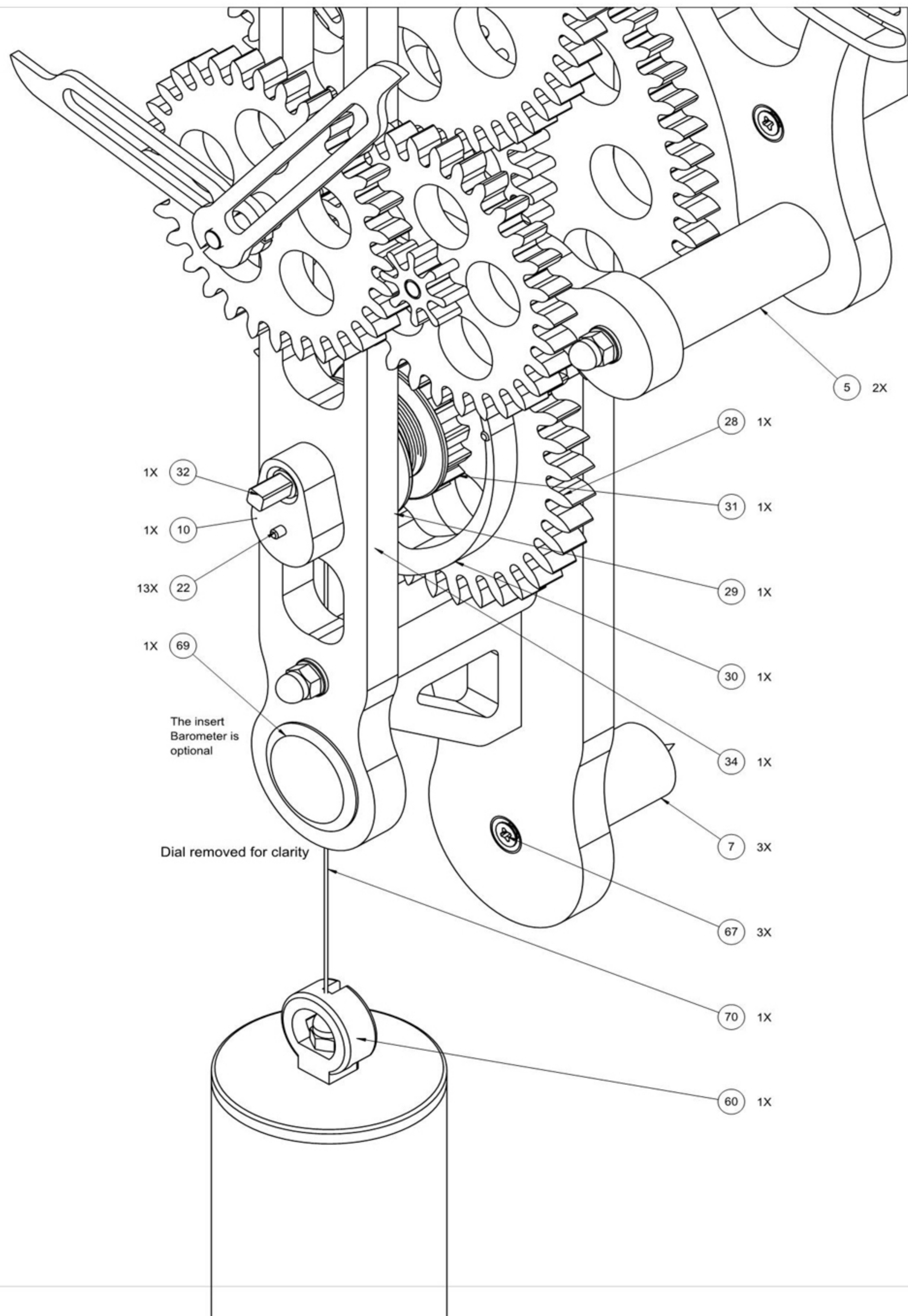
- 1X 2
- 2X 5
- 7X 68
- 6X 63
- 3X 19
- 1X 27
- 3X 20
- 7X 8
- 3X 19
- 1X 4
- 1X 49
- 13X 22
- 1X 12
- 1X 15
- 1X 16
- 1X 17
- 1X 14
- 13X 22
- 1X 32
- 1X 29
- 1X 64
- 13X 22
- 1X 10
- 1X 6
- 3X 53
- 1X 69
- 1X 3
- 1X 70
- 1X 60
- 1X 1
- 53 3X
- 7 3X
- 67 3X
- 25 3X
- 8 7X
- 52 7X
- 23 1X
- 24 1X
- 52 7X
- 19 3X
- 18 1X
- 72 1X
- 20 3X
- 52 7X
- 21 1X
- 62 1X
- 7 1X
- 33 1X
- 62 2X
- 9 1X
- 28 1X
- 30 1X
- 70 1X

- 5X 66
- 1X 46
- 1X 38
- 13X 22
- 30X 37
- 1X 47
- 11X 26
- 5X 66
- 1X 44
- 13X 22
- 1X 45

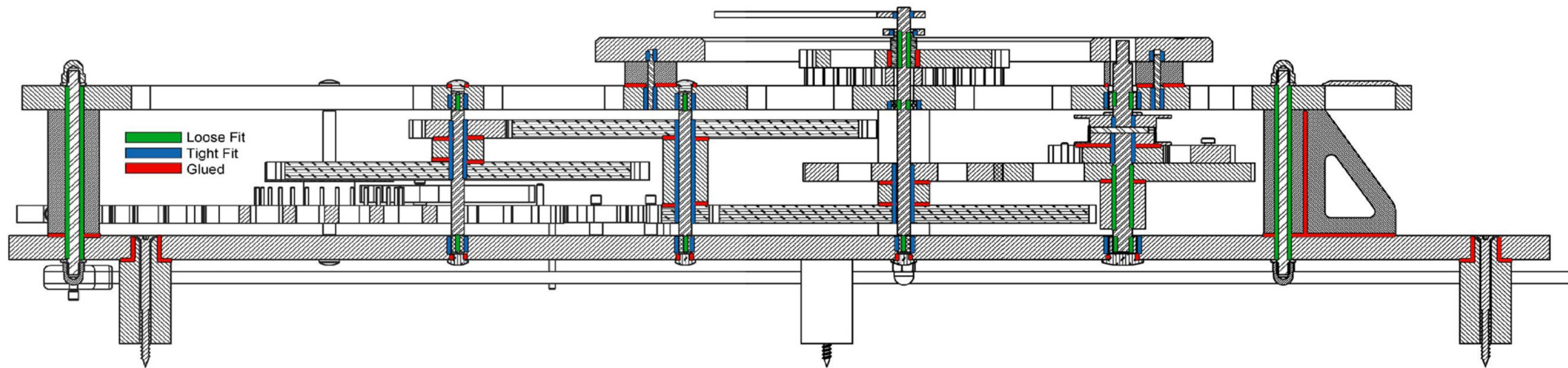
Sht 1 of 11Shts	A2	Law Wooden Clock 24 - Gravity escapement V3	
Not to Scale Unless otherwise stated		All dimensions in mm and (inches) 3rd Angle projection	Designed by: Brian Law www.woodenclocks.co.uk July 2015

ITEM NO.	PART NUMBER	DESCRIPTION	QTY.
1	Clock 24-Back Frame	Wood	1
2	Clock 24-Front Frame	Wood	1
3	Clock 24-Frame Brace	Wood	1
4	Clock 24-Dial	Wood	1
5	Clock 24-Frame Spacer	Wood Dowel	2
6	Clock 24-Frame Spacer	Wood Dowel	1
7	Clock 24-Wall Spacer	Wood Dowel	3
8	Clock 24-Bearing Plug-6	Wood	7
9	Clock 24-Bearing Plug-Large	Wood	1
10	Clock 24-Dial Spacer Bottom	Wood	1
11	Clock 24-Hour Gear 30T	Wood	1
12	Clock 24-Hour Gear 10T	Wood	1
13	Clock 24-Hour Gear 8T	Wood	1
14	Clock 24-Hour Gear 32T	Wood	1
15	Clock 24-Hour tube	Wood	1
16	Clock 24-Hour Hand	Plastic	1
17	Clock 24-Minute Hand	Plastic	1
18	Clock 24-Gear 32T	Wood	1
19	Clock 24-Gear 60T	Wood	3
20	Clock 24-Gear Spacer-1	Wood Dowel	3
21	Clock 24-Shaft-121	Silver Steel	1
22	Clock 24-Pin-11		13
23	Clock 24-Gear 12T	Wood	1
24	Clock 24-Gear Spacer-2	Wood Dowel	1
25	Clock 24-Shaft-72	Silver Steel	3
26	Clock 24-Pin-8	Silver Steel	11
27	Clock 24-Gear 15T	Wood	1
28	Clock 24-Gear 40T	Wood	1
29	Clock 24-Drum	Wood	1
30	Clock 24-Pawl	Wood	1
31	Clock 24-Ratchet	Wood	1
32	Clock 24-Drum Shaft	Silver Steel	1
33	Clock 24-Drive Spacer-rear	Wood	1
34	Clock 24-Ratchet Pivot	Silver Steel	1
35	Clock 24-Gear 20T	Wood	1
36	Clock 24-Escape wheel-60t	Wood	1
37	Clock 24-Escapement index pin	Silver Steel	30
38	Clock 24-Seconds ring	Plastic	1
39	Clock 24-Pendulum Pivot Block	Wood	1
40	Clock 24-Pendulum Rod	Carbon Fibre Ø0.25"	1

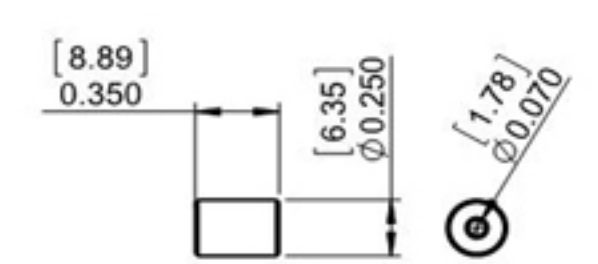
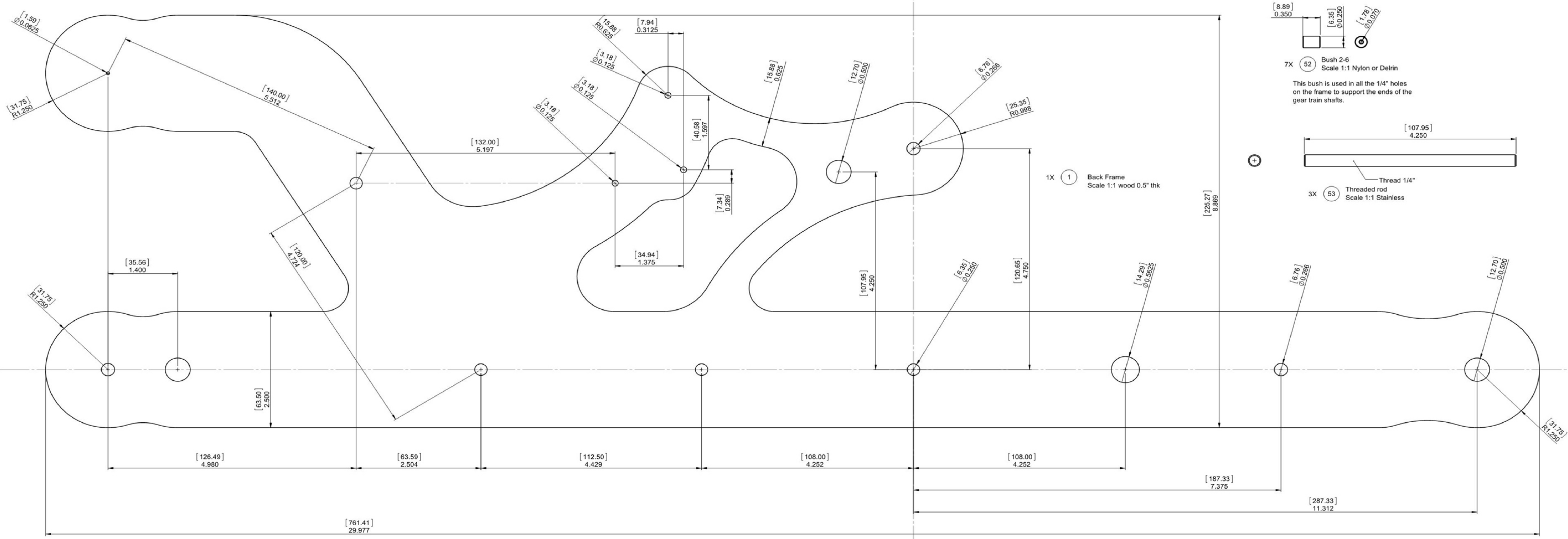
ITEM NO.	PART NUMBER	DESCRIPTION	QTY.
41	Clock 24-Pendulum Bob	Wood and Brass	1
42	Clock 24-Pendulum Lock	Wood	1
43	Clock 24-Pendulum Pivot	Silver Steel	1
44	Clock 24-Star	Wood	1
45	Clock 24-Trigger	Wood	1
46	Clock 24-Gravity Arm-2	Wood	1
47	Clock 24-Lifting Lever 2	Wood	1
48	Clock 24-Bush 6-25	Nylon or Delrin	1
49	Clock 24-Dial Spacer Top	Wood	1
50	Clock 24-Balance weight	Brass	1
51	Clock 24-Bush 6-20	Nylon or Delrin	2
52	Clock 24-Bush 2-6	Nylon or Delrin	7
53	Clock 24-Threaded Rod	Ø1/4" threaded rod	3
54	Clock 24-Impulse Pin	Silver Steel	1
55	Clock 24-Hour Gear Pivot	Silver Steel	1
56	Clock 24-Weight end Plug	Wood	1
57	Clock 24-Weight Tube	Plastic Tube (to Suit)	1
58	Weight - End Plug	Wood	1
60	Clock 24-Threaded rod-weight	Ø1/4" threaded rod	1
60	Clock 24-Weight Anchor	Wood	1
62	Clock 24-Bearing 1-4	Ø1/4inxØ1/2inx3/16in	1
62	Roller Bearing 3_8	Ø3/8"x9/16"longxØ3/8"	2
63	Washer-25	Brass or Delrin	6
64	Washer 3-8	Brass or Steel	1
65	Nut 25in	1/4" Nut	1
66	Neodymium magnet	Ø5x5mm long	5
67	Woodscrew_No4_5x60	Brass	3
68	Clock 24-Domed nut-.25	M6 Domed Nut	7
69	Barometer	Optional	1
70	Clock 24-Weight Cord	Blind Cord Ø1mm	1
71	Clock 24-Bush 6-30	Nylon or Delrin	2
72	Gear Spacer-3	Wood	1



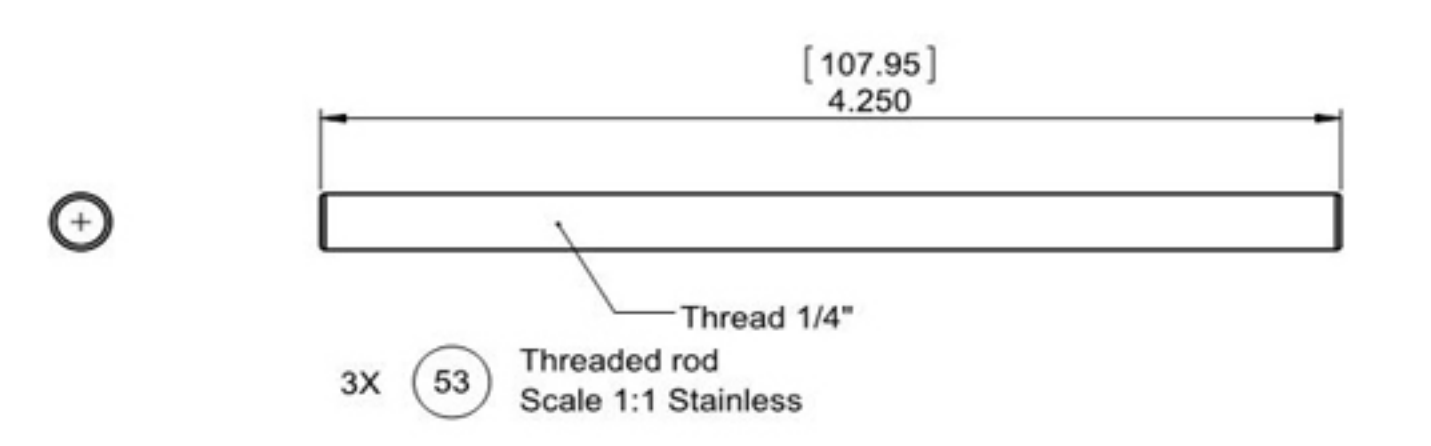
Sht 3 of 11Shts	A2	Law Wooden Clock 24 - Gravity escapement V3	
Not to Scale Unless otherwise stated		All dimensions in mm and (inches) 3rd Angle projection	Designed by: Brian law www.woodenclocks.co.uk July 2015



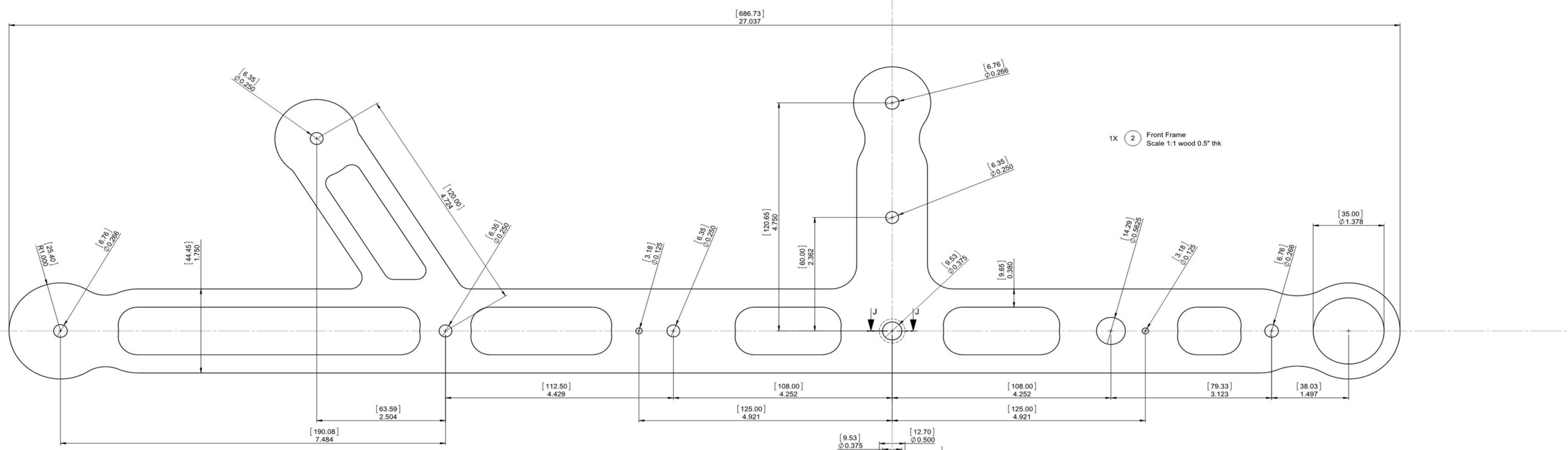
Sht 4 of 11Shts	A2	Law Wooden Clock 24 - Gravity escapement V3	
Not to Scale Unless otherwise stated		All dimensions in mm and (inches) 3rd Angle projection	Designed by: Brian law www.woodenclocks.co.uk July 2015



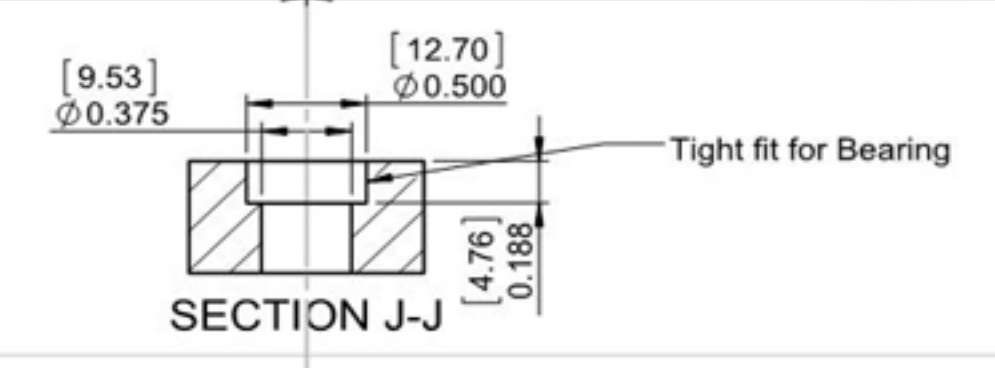
7X (52) Bush 2-6
Scale 1:1 Nylon or Delrin
This bush is used in all the 1/4" holes on the frame to support the ends of the gear train shafts.



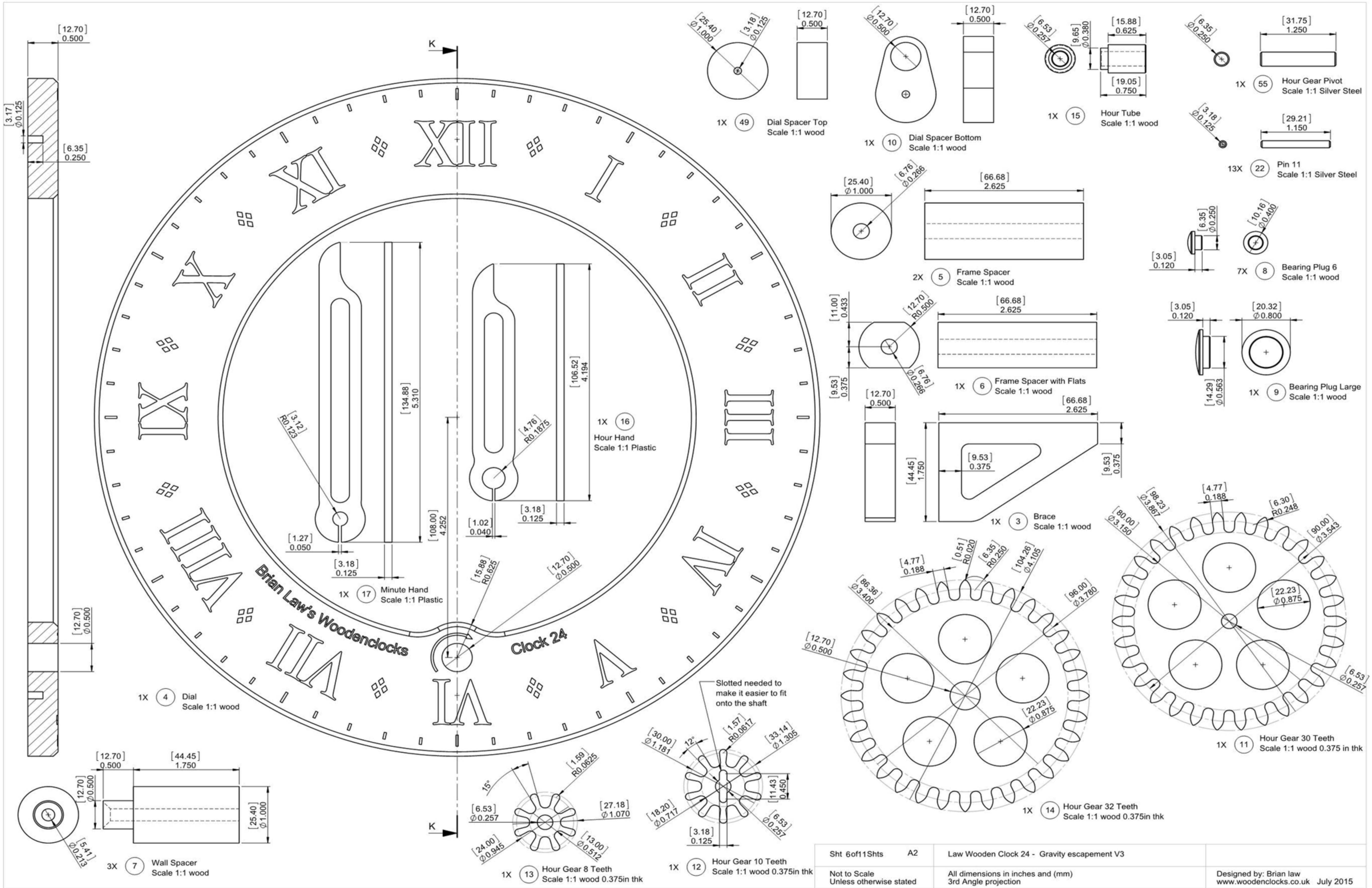
1X (1) Back Frame
Scale 1:1 wood 0.5" thk



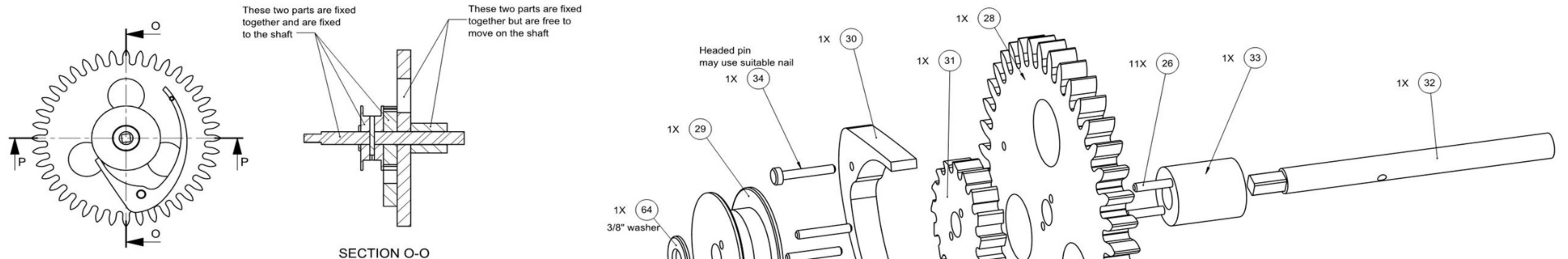
1X (2) Front Frame
Scale 1:1 wood 0.5" thk



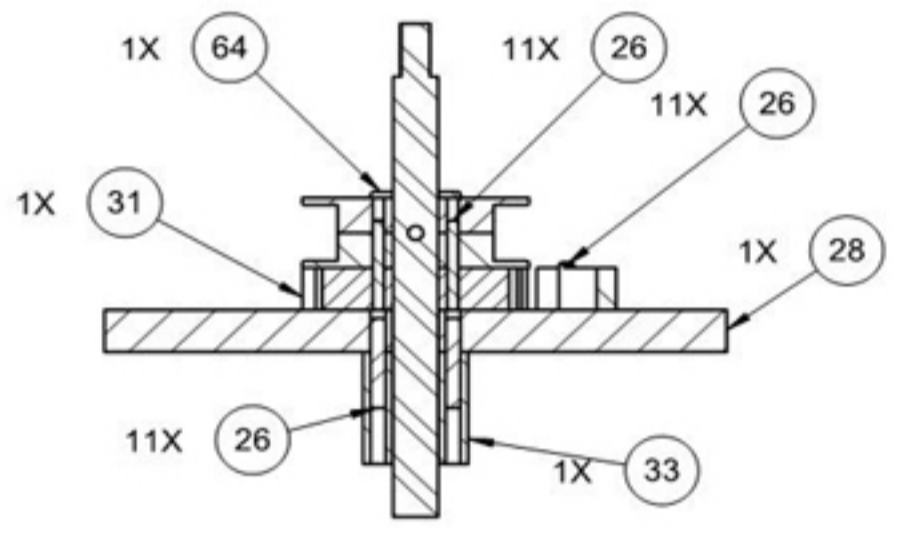
Sht 5 of 11 Shts	A1	Law Wooden Clock 24 - Gravity escapement V3	
Not to Scale Unless otherwise stated		All dimensions in mm and (inches) 3rd Angle projection	Designed by: Brian Law www.woodenclocks.co.uk July 2015



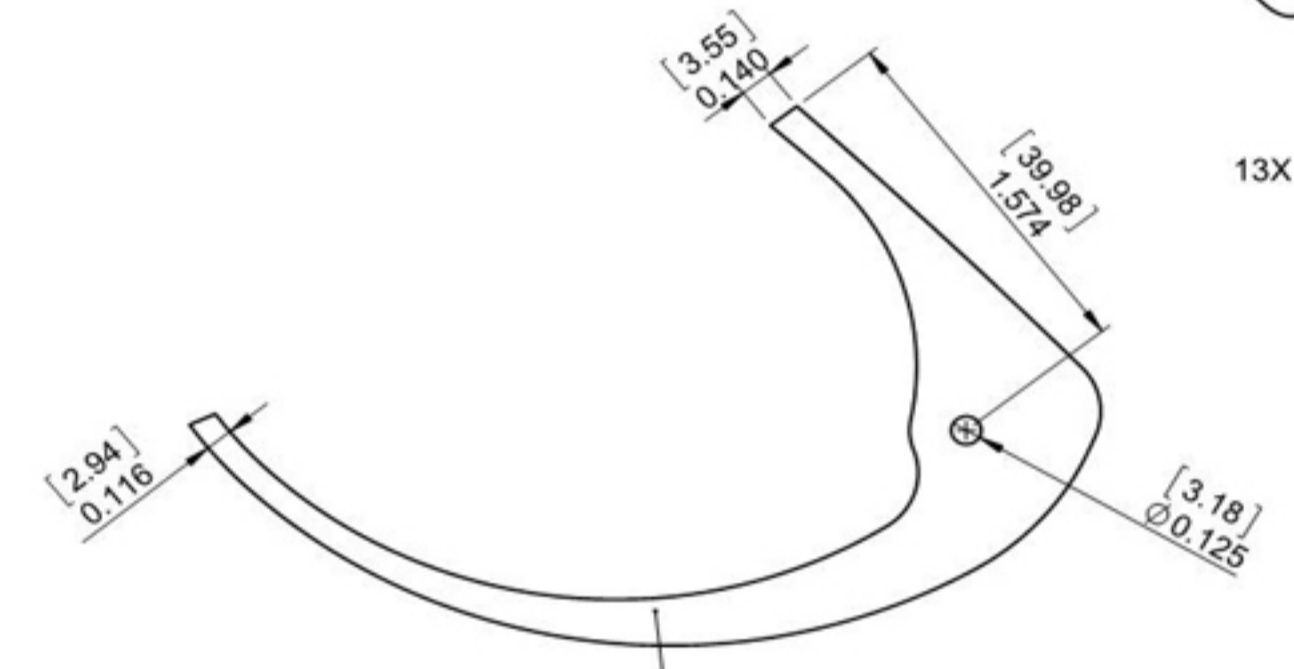
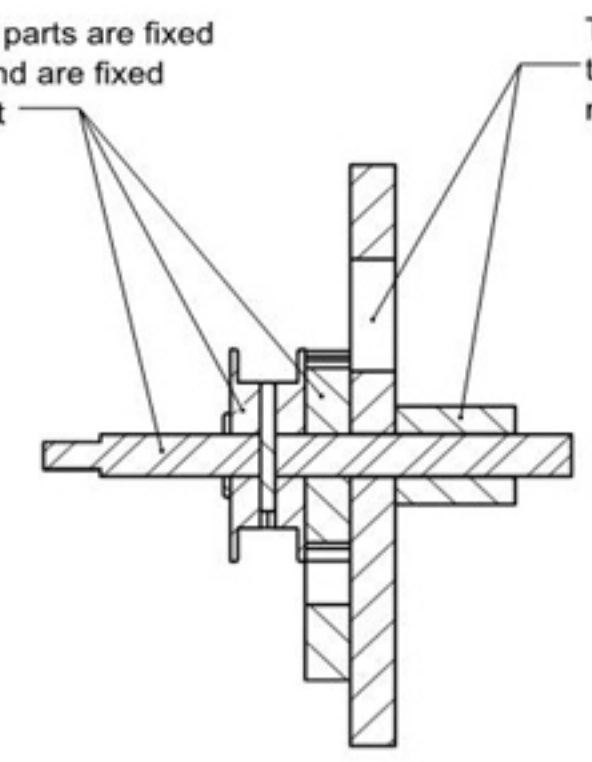
Sht 6of11Shts	A2	Law Wooden Clock 24 - Gravity escapement V3	Designed by: Brian law www.woodenclocks.co.uk July 2015
Not to Scale Unless otherwise stated		All dimensions in inches and (mm) 3rd Angle projection	



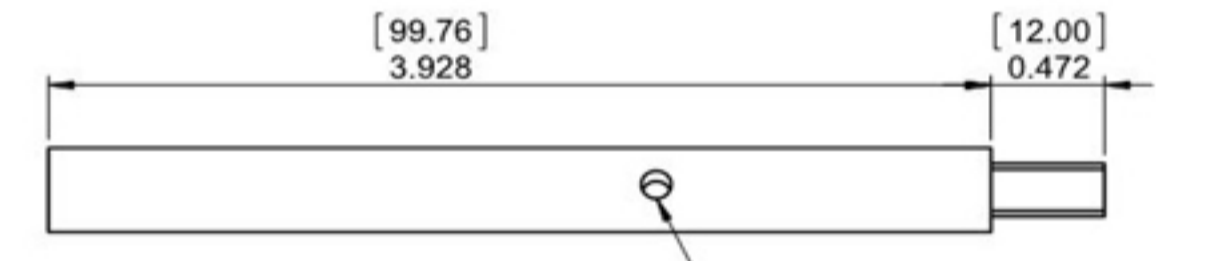
Drive Train 1



SECTION O-O

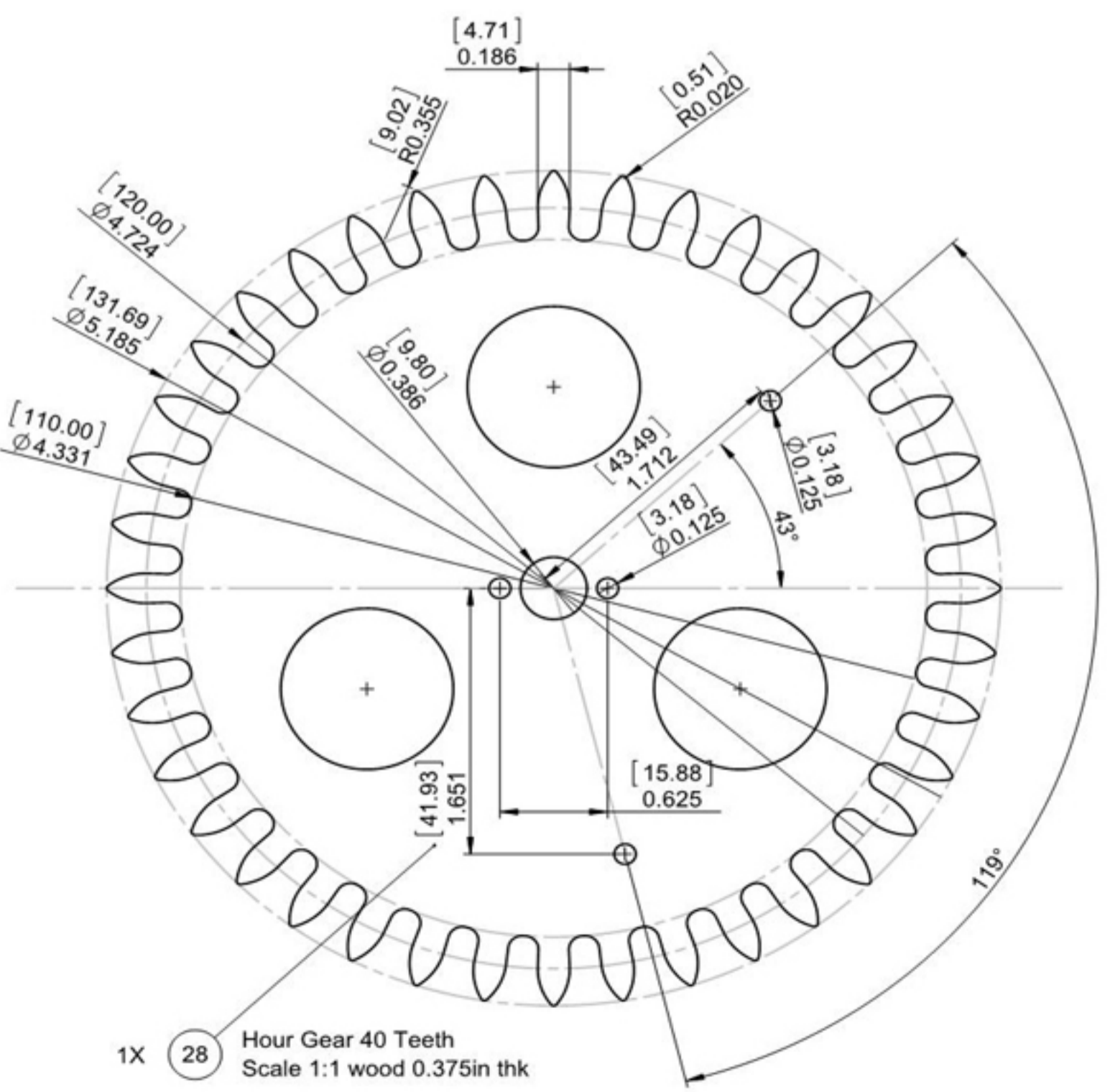


1X 30 Pawl
Scale 1:1 wood 0.375in thk

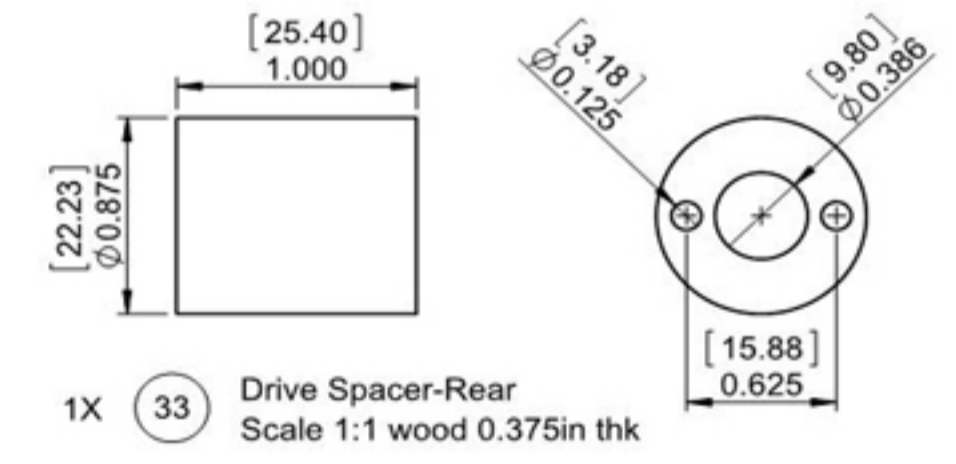


1X 32 Winder Shaft
Scale 1:1 Steel
Ø.125 hole drill on assembly

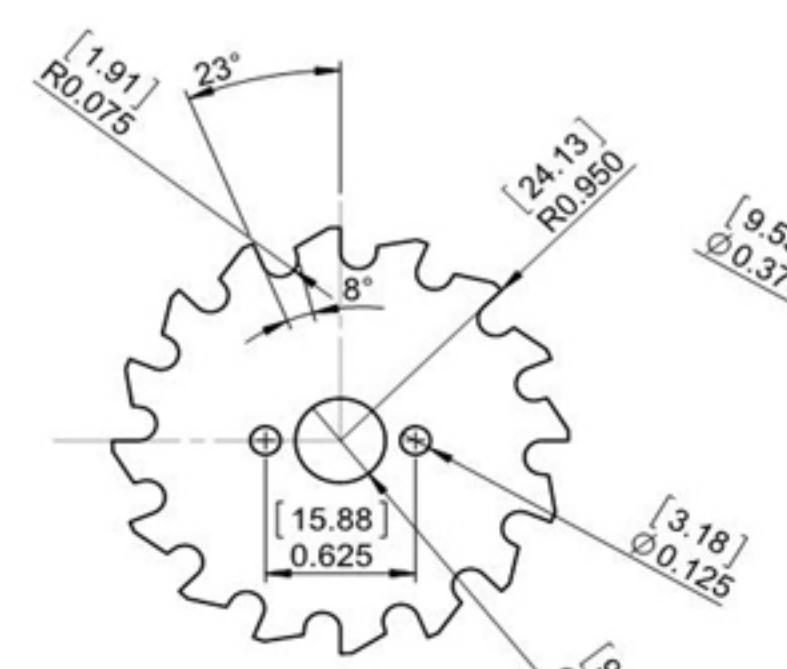
For Type 15 Grandfather Clock winder. You will need to purchase the winder from seller on the internet.



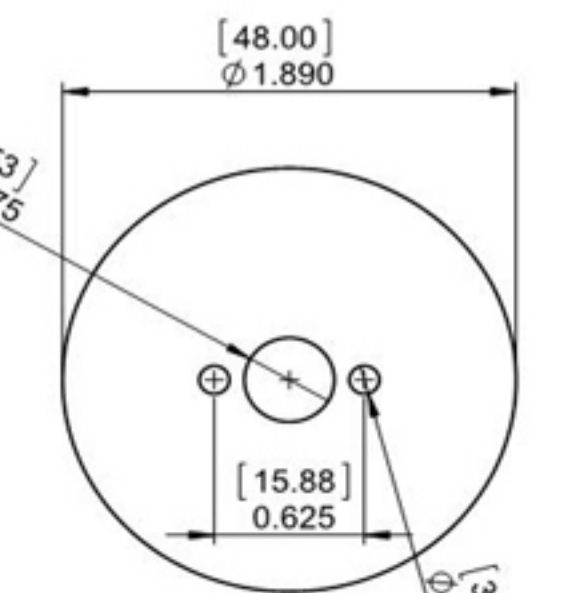
1X 28 Hour Gear 40 Teeth
Scale 1:1 wood 0.375in thk



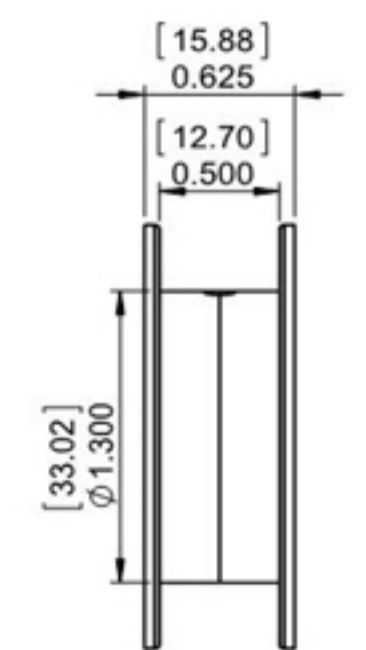
1X 33 Drive Spacer-Rear
Scale 1:1 wood 0.375in thk



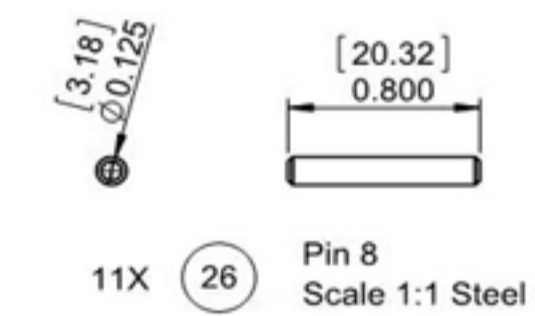
1X 31 Ratchet
Scale 1:1 wood 0.375in thk



1X 29 Drum
Scale 1:1 wood 0.375in thk
Can be turned or routed if split in two

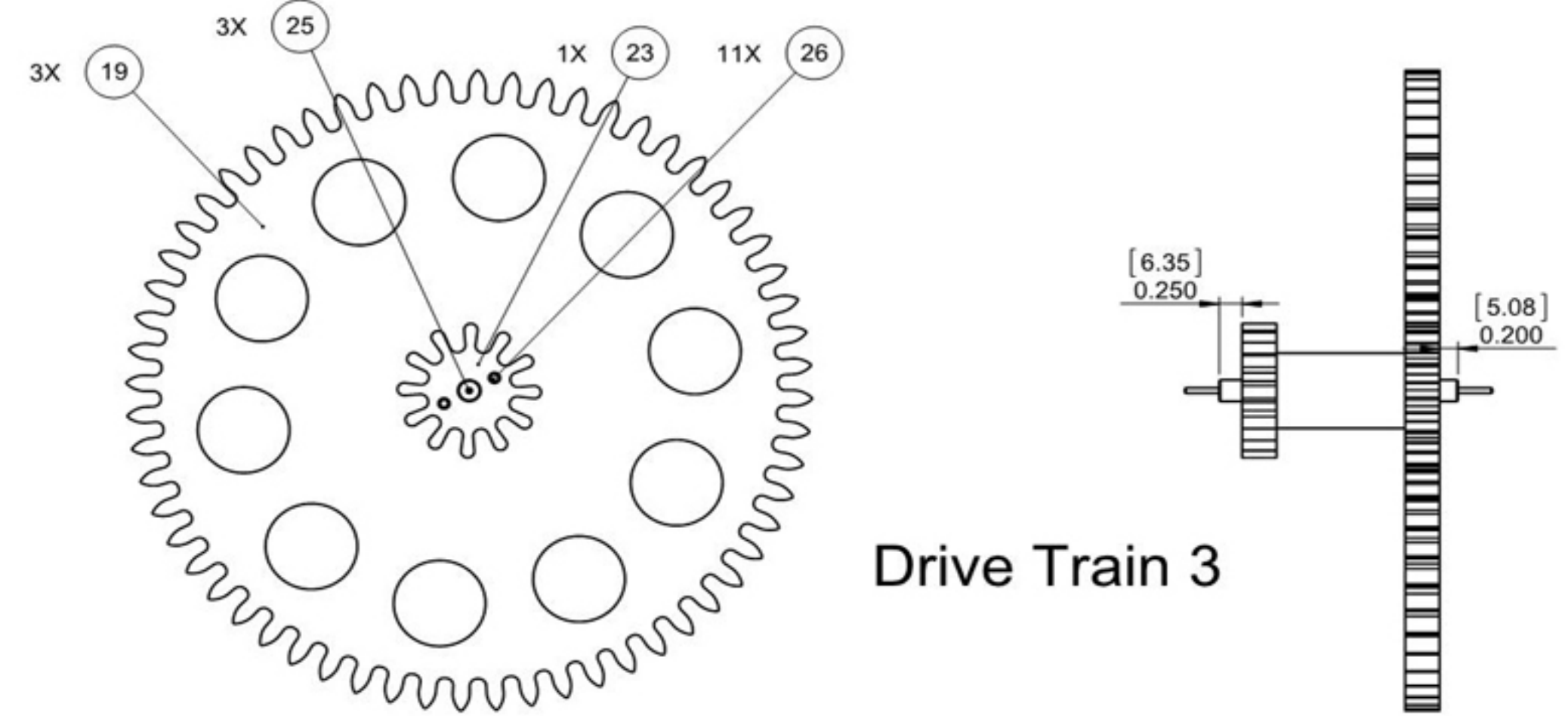
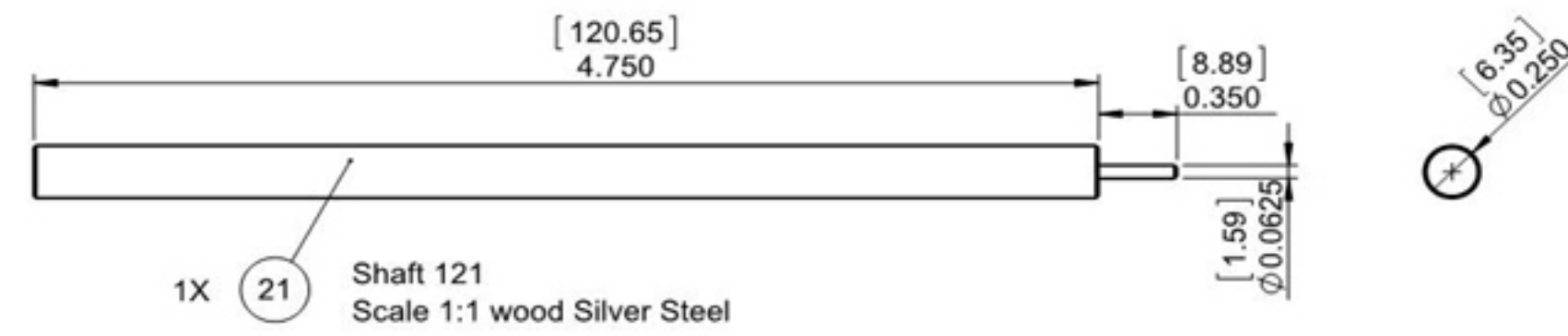
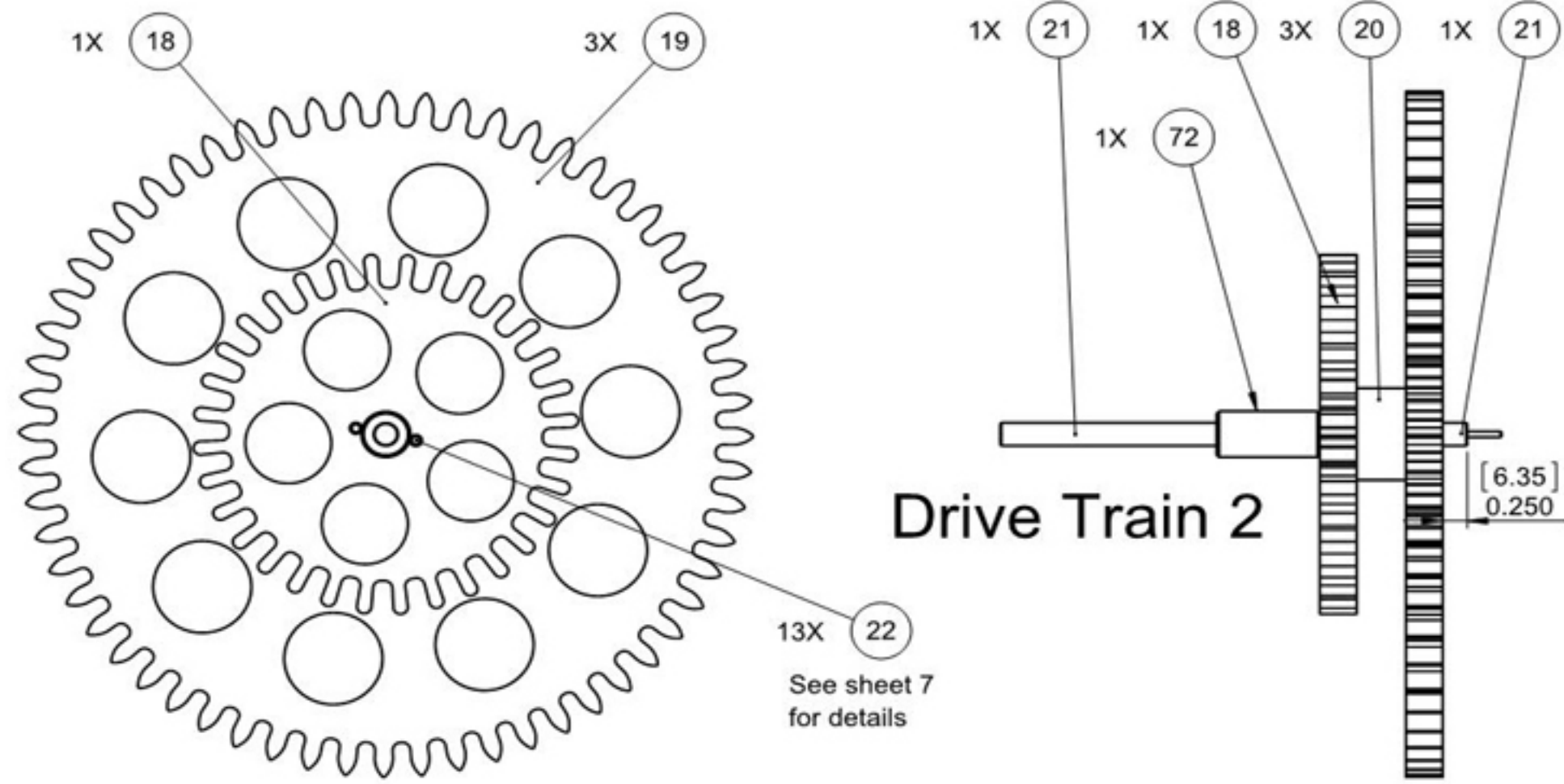


1X 34 Ratchet Pivot
Scale 1:1 Steel
Alternatively use a round nail of suitable size

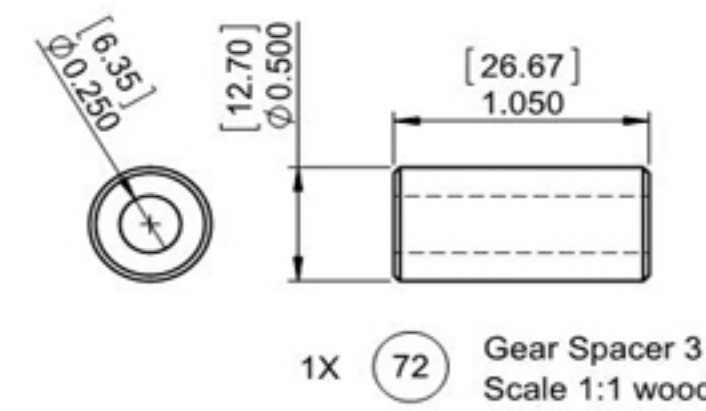
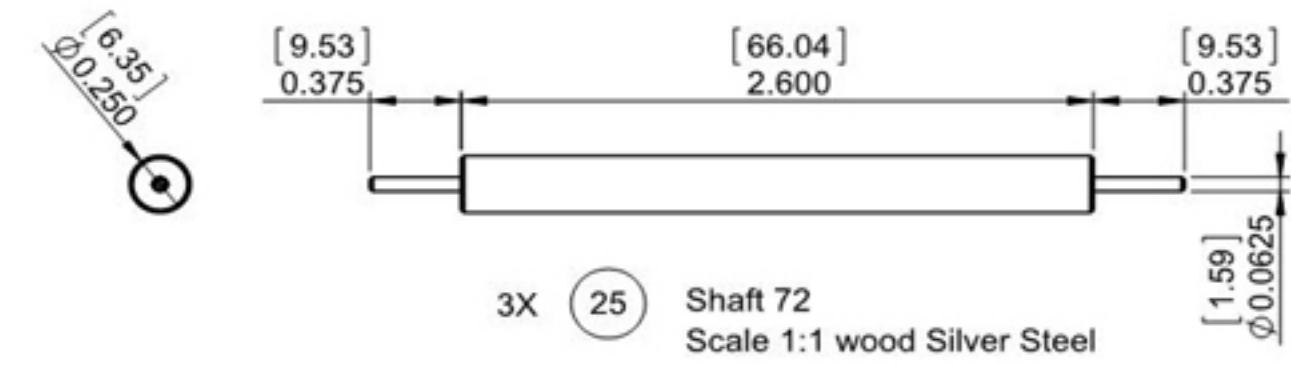
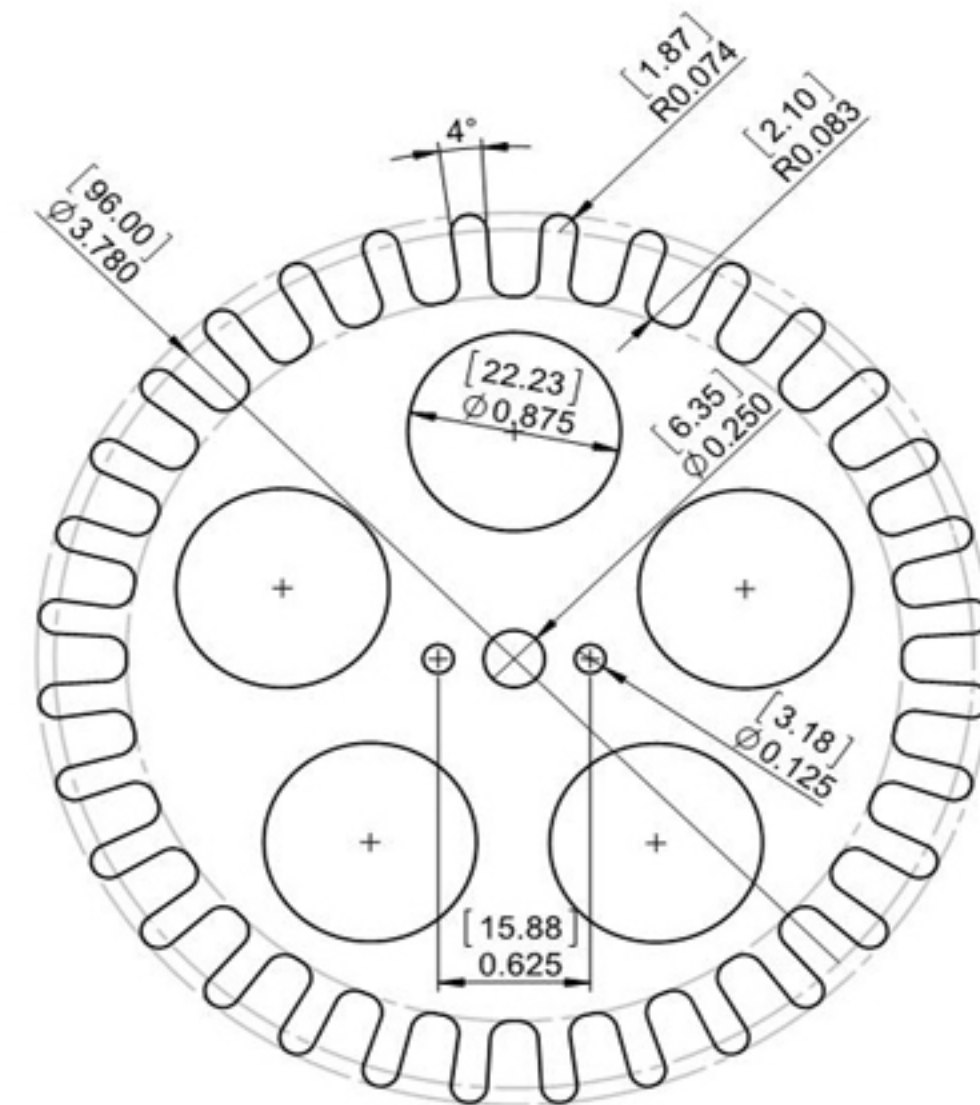
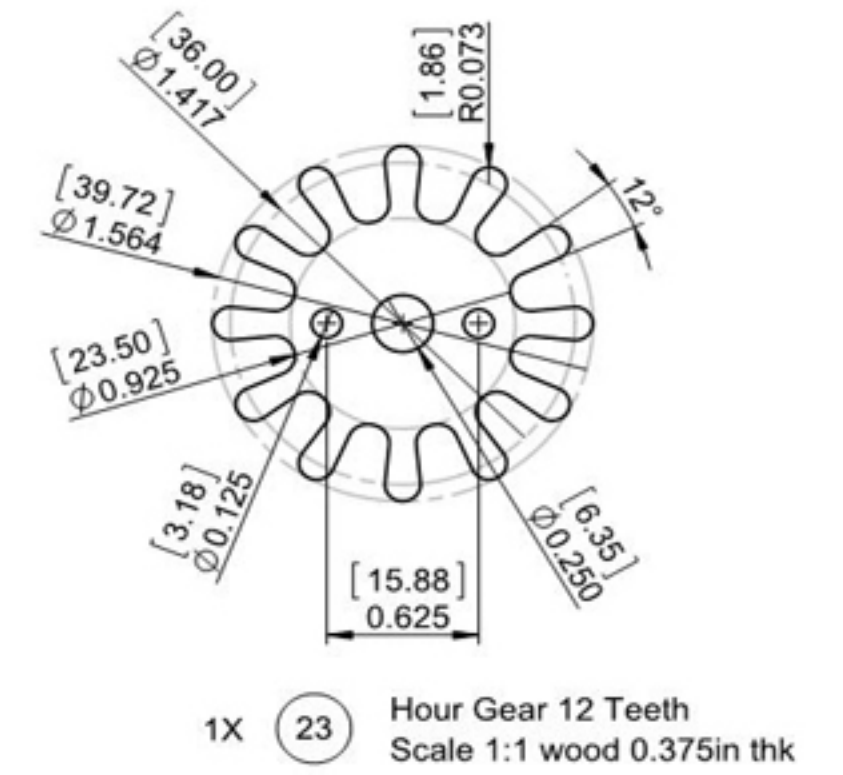
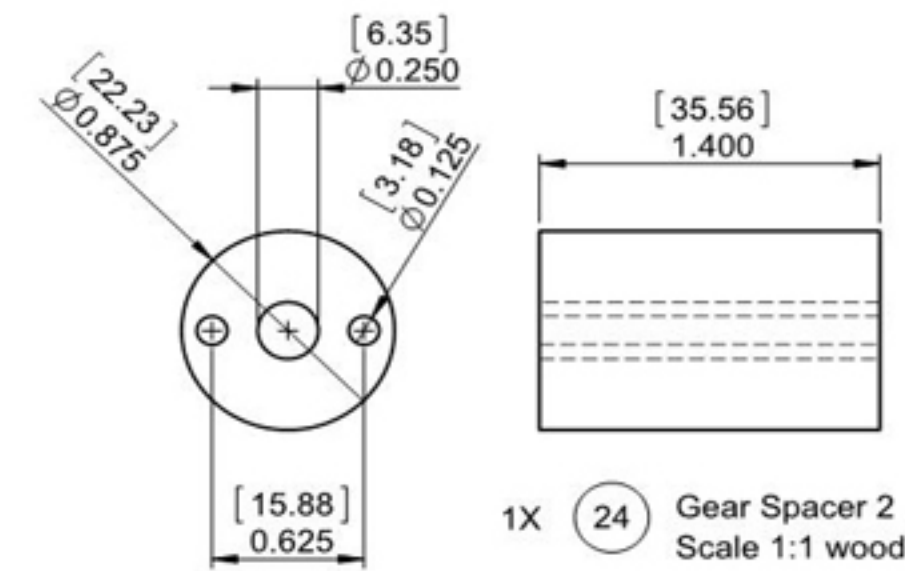
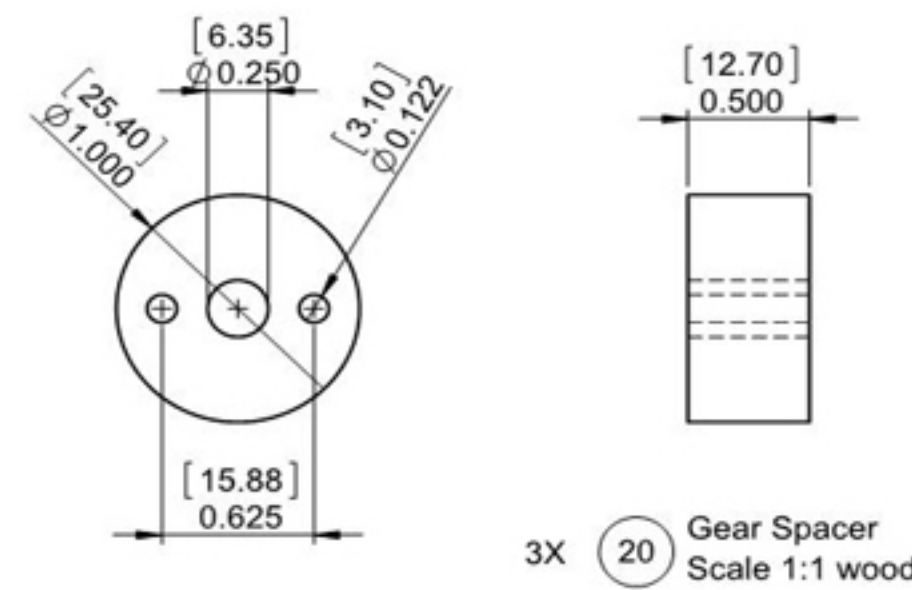
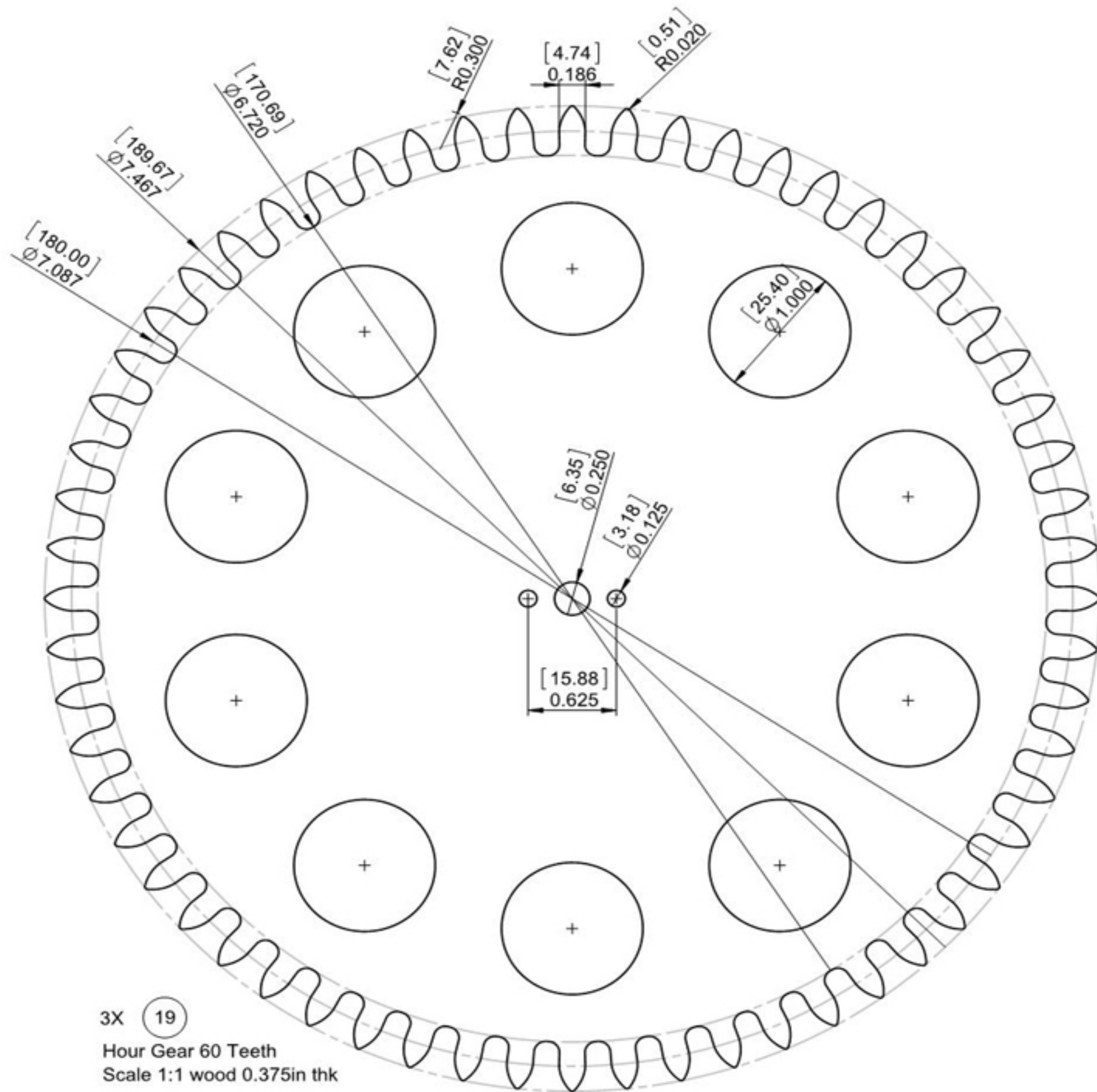


11X 26 Pin 8
Scale 1:1 Steel

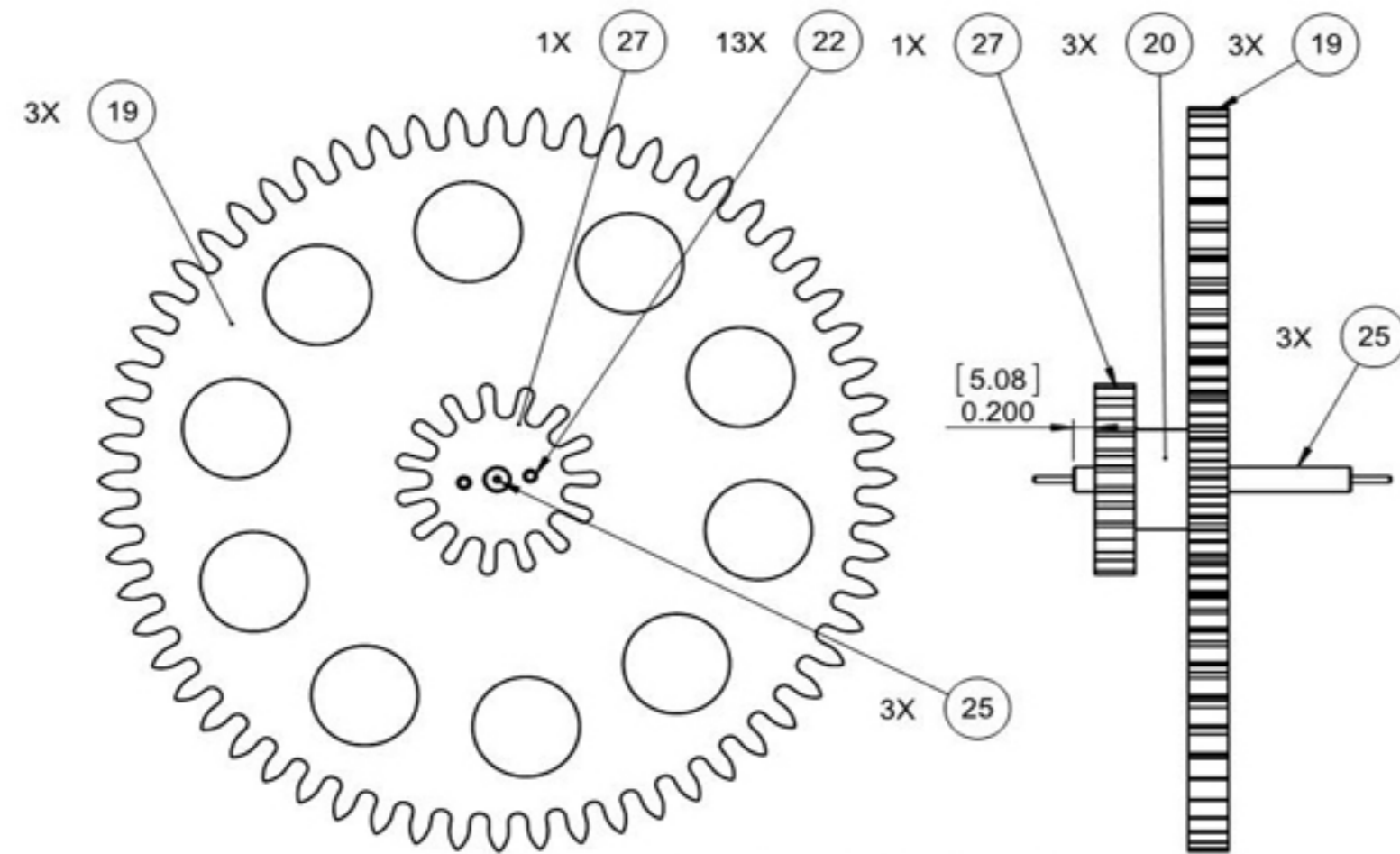
Sht 7 of 11Shts	A2	Law Wooden Clock 24 - Gravity escapement V3	
Not to Scale Unless otherwise stated		All dimensions in mm and (inches) 3rd Angle projection	Designed by: Brian law www.woodenclocks.co.uk July 2015



Drive Train 3

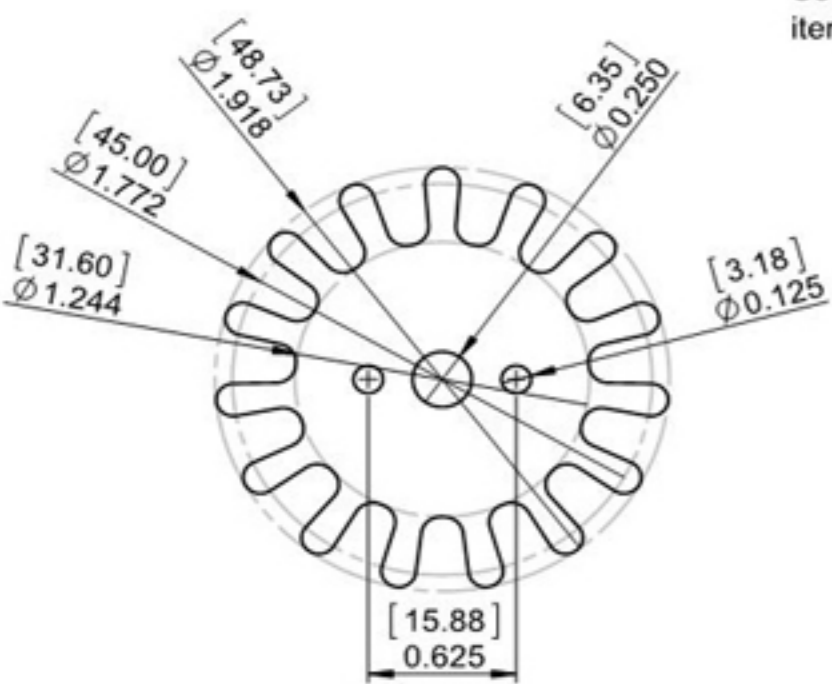


Sht 8 of 11Shts	A2	Law Wooden Clock 24 - Gravity escapement V3	
Not to Scale Unless otherwise stated		All dimensions in mm and (inches) 3rd Angle projection	Designed by: Brian law www.woodenclocks.co.uk July 2015

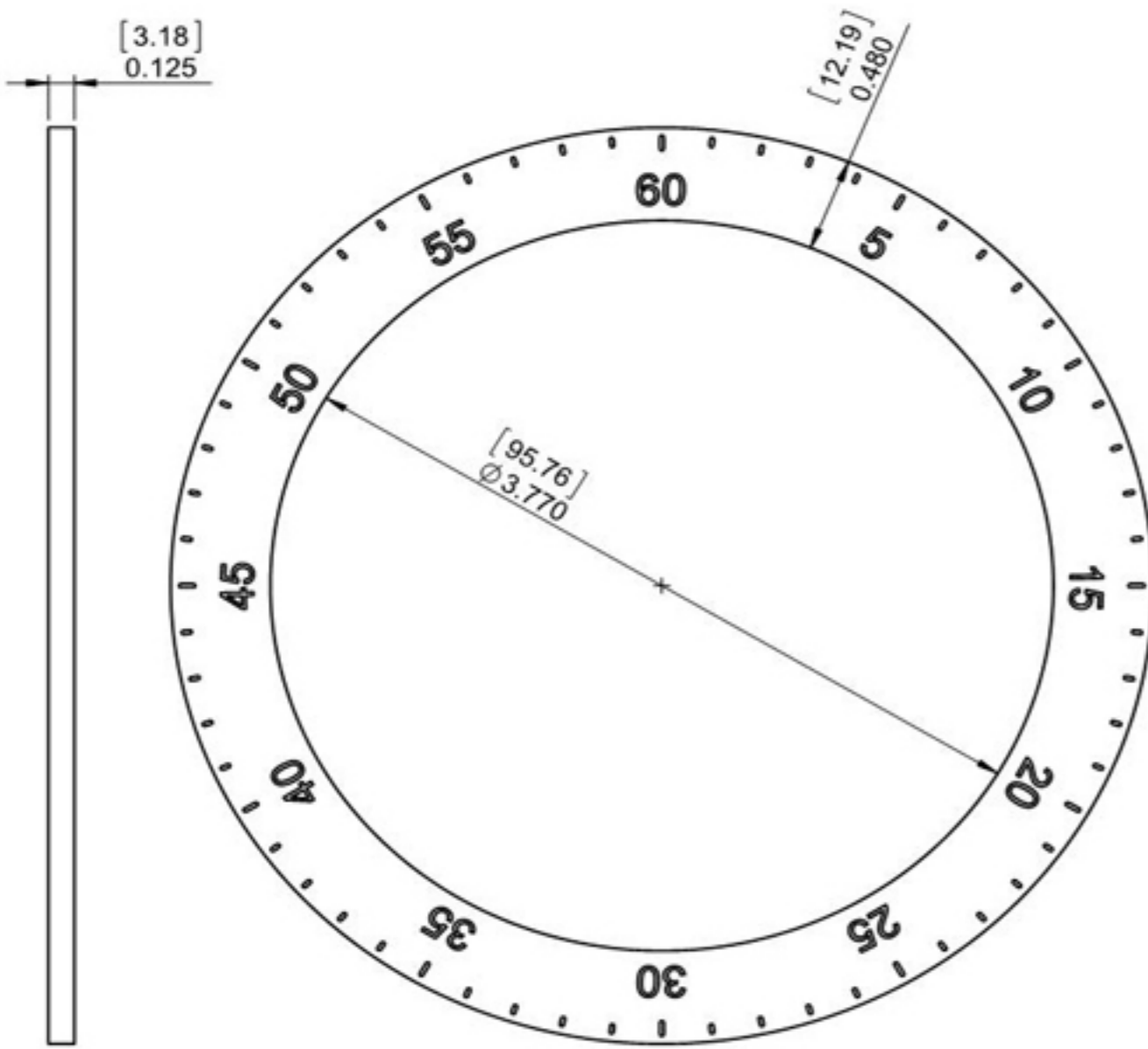


Drive Train 4

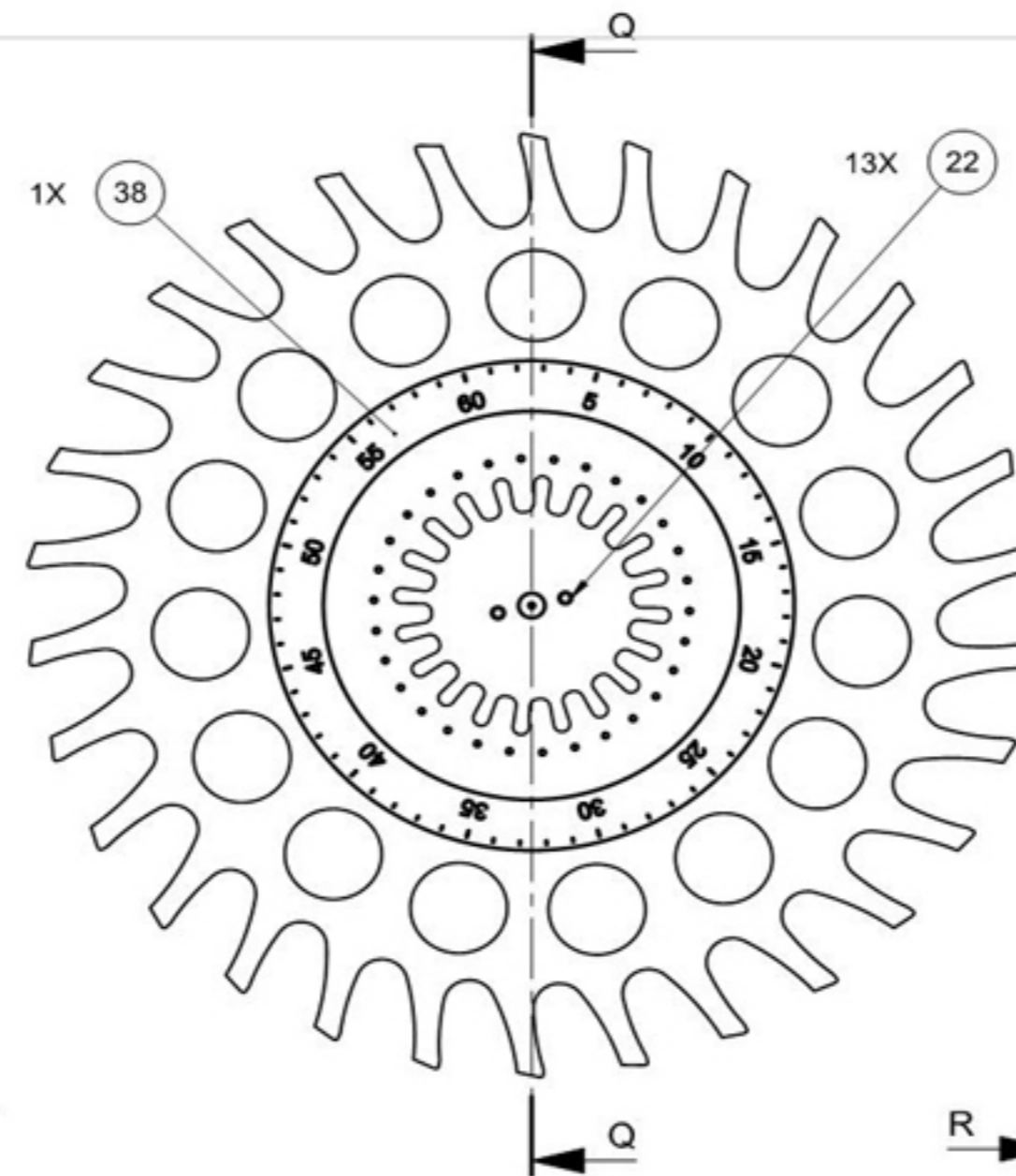
See Sheet 8 for details of items 19, 20 and 25



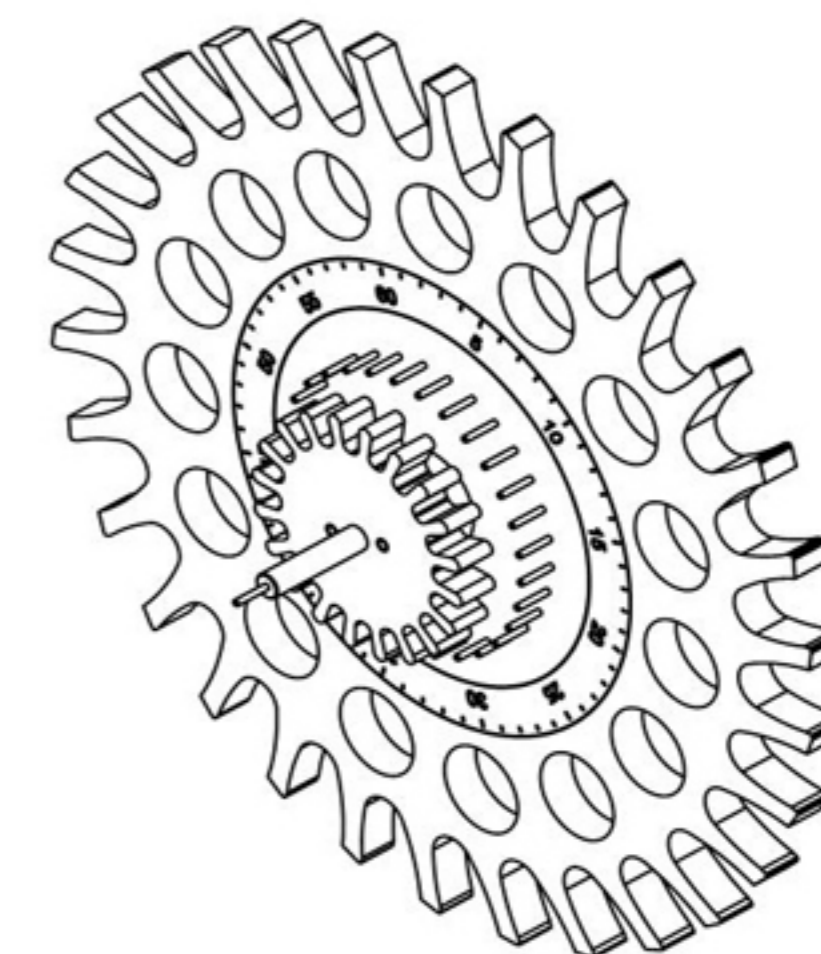
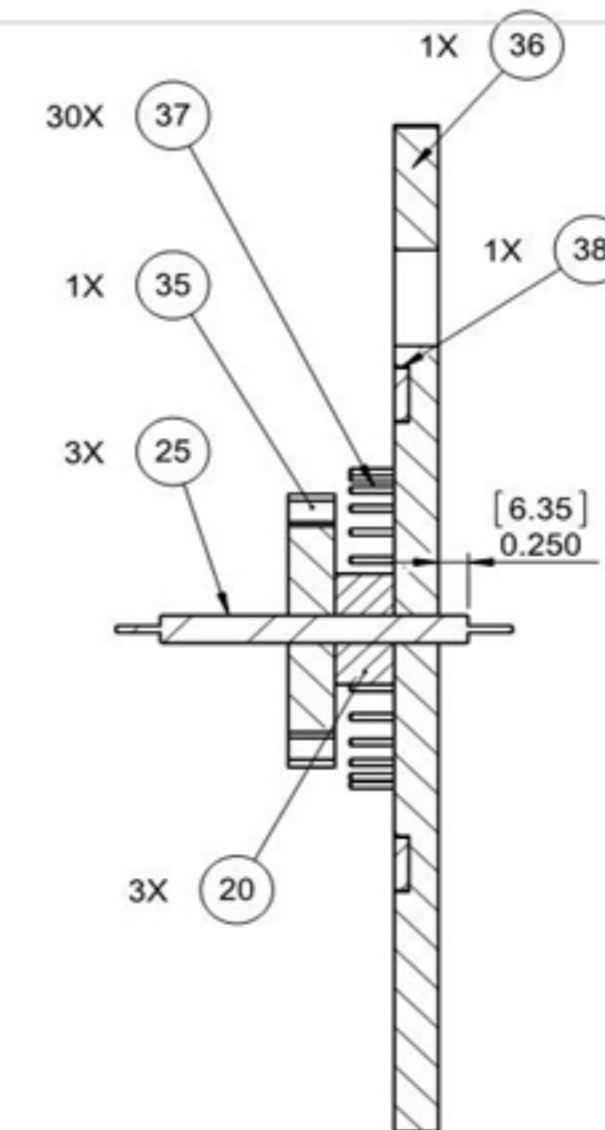
1X 27 Hour Gear 15 Teeth
 Scale 1:1 wood 0.375in thk



38 Seconds Ring
 Scale 1:1 Engraving plastic

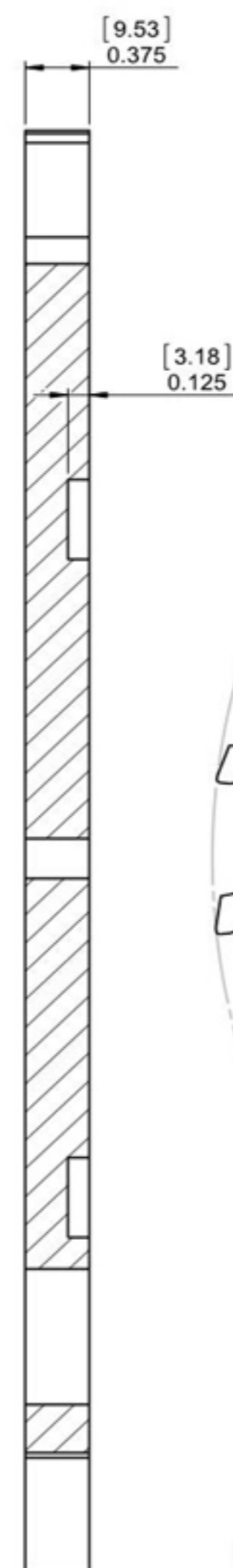


1X 36 Escape Wheel 30 Teeth
 Scale 1:1 wood 0.375in thk

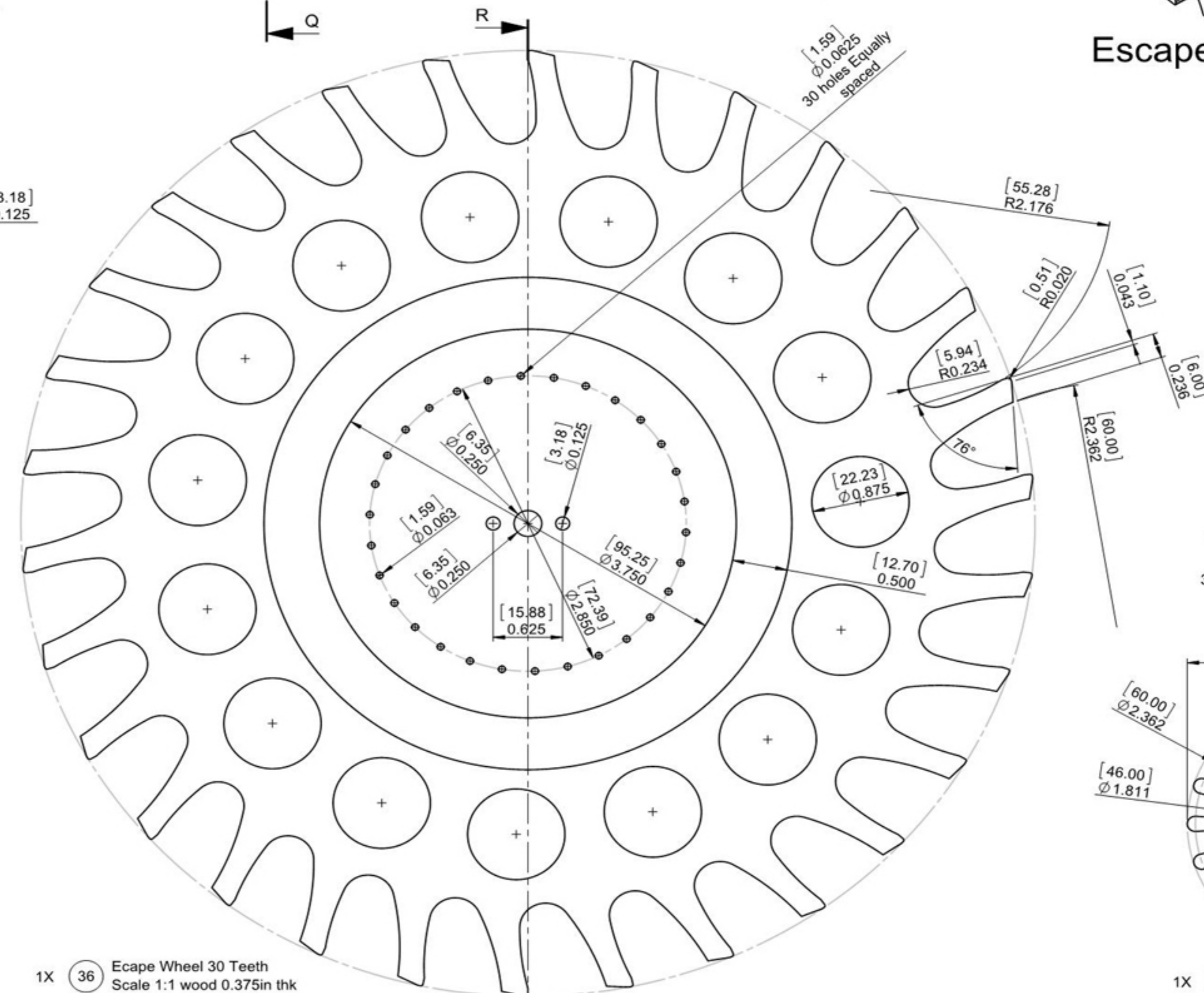


Escape Wheel Assembly

See Sheet 7 for details of items 20 and 25



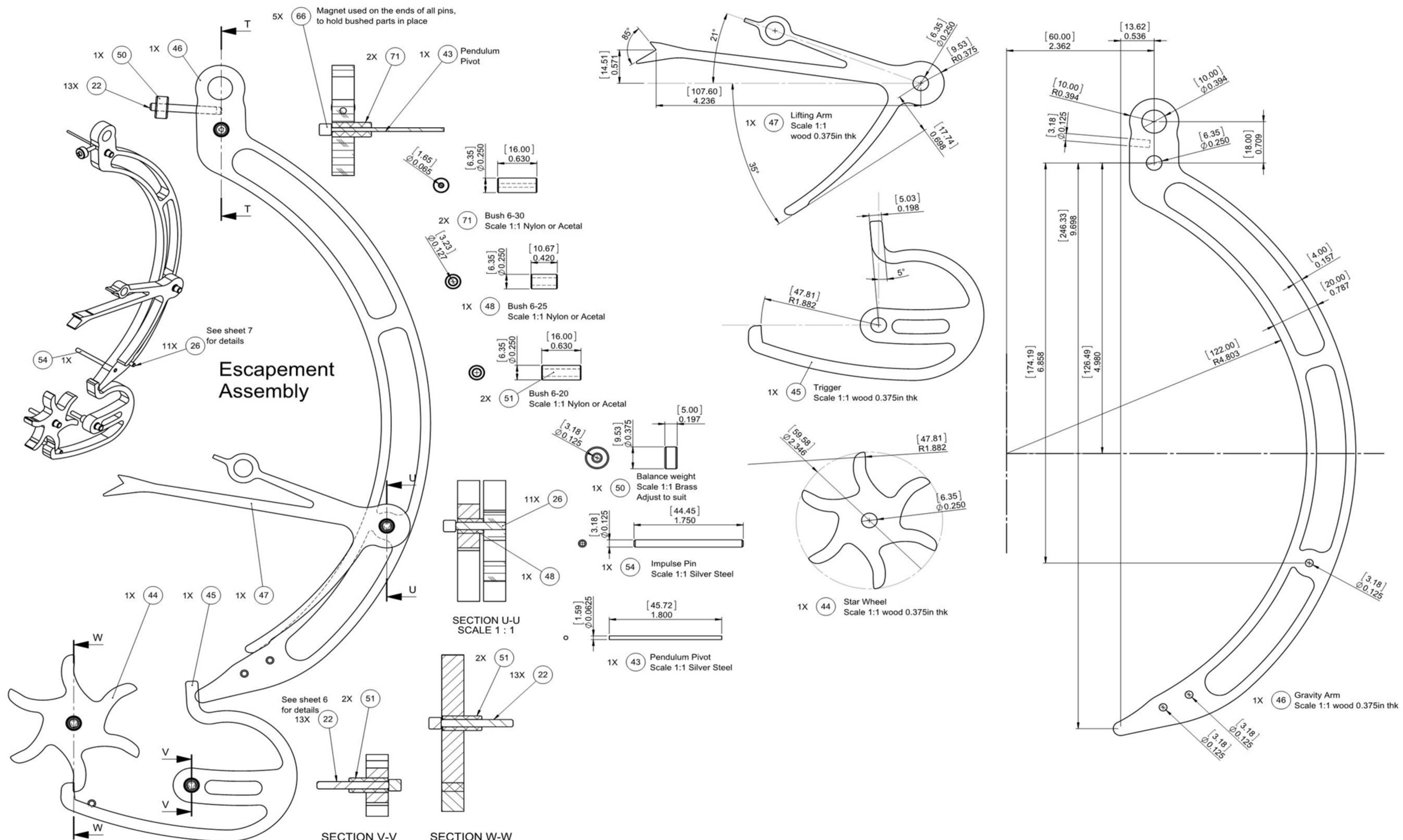
SECTION R-R
 SCALE 1 : 1



1X 35 Gear 20 Teeth
 Scale 1:1 wood 0.375in thk

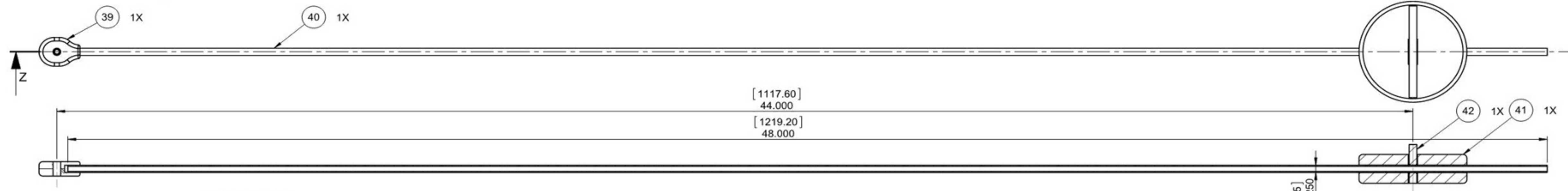
30X 37 Escapement index pin
 Scale 1:1 Silver Steel

Sht 9 of 11Shts	A2	Law Wooden Clock 24 - Gravity escapement V3	
Not to Scale Unless otherwise stated		All dimensions in mm and (inches) 3rd Angle projection	Designed by: Brian law www.woodenclocks.co.uk July 2015

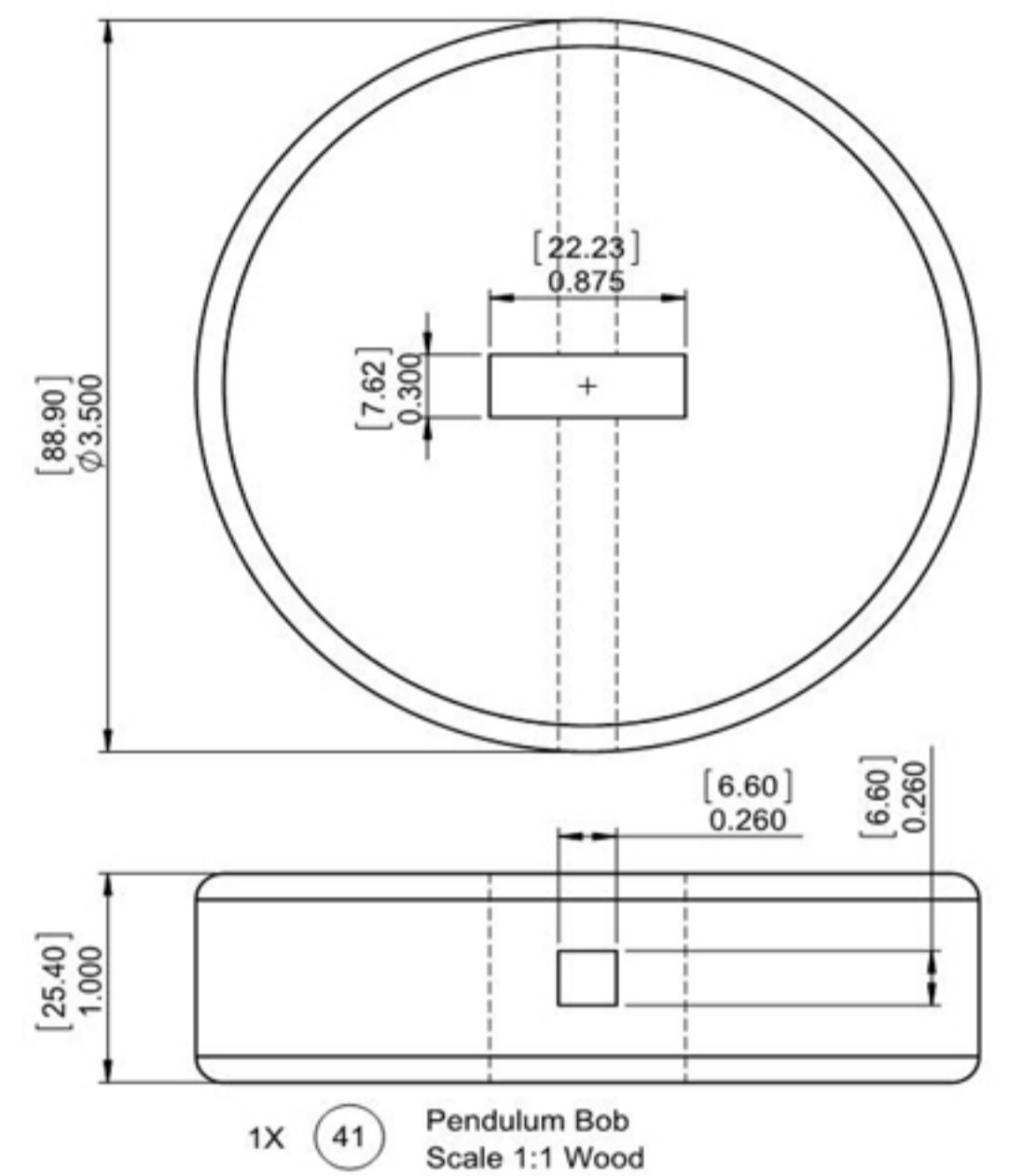
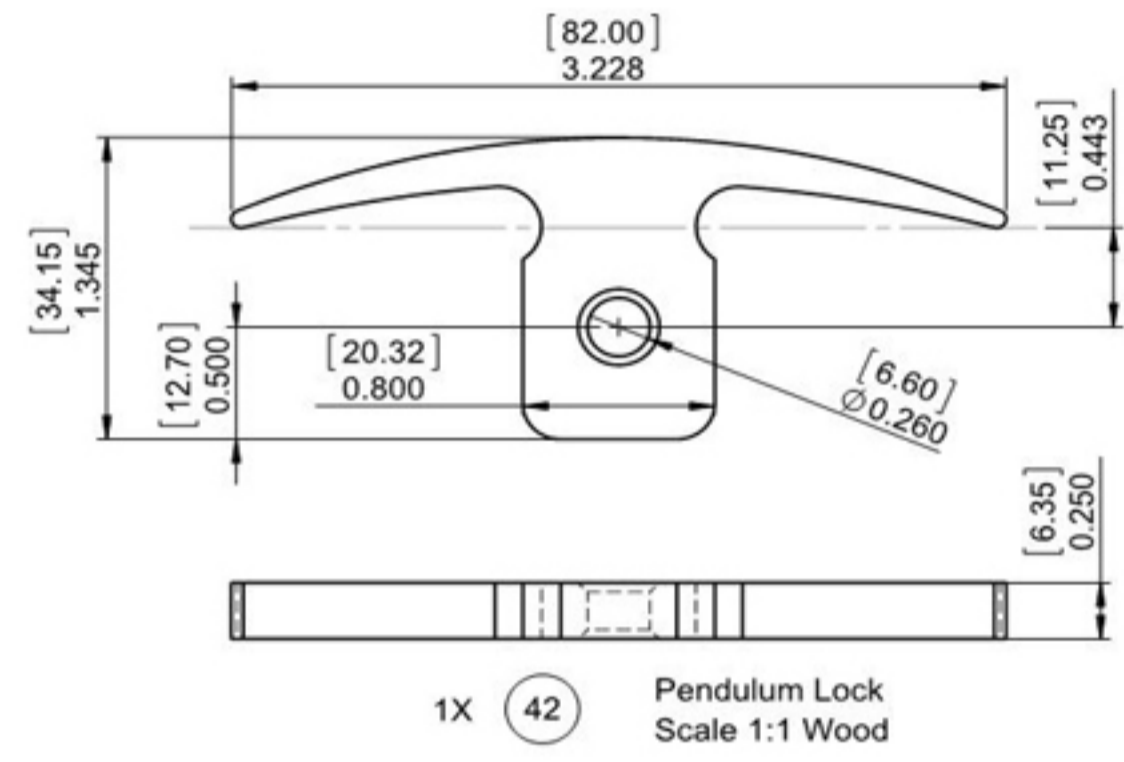
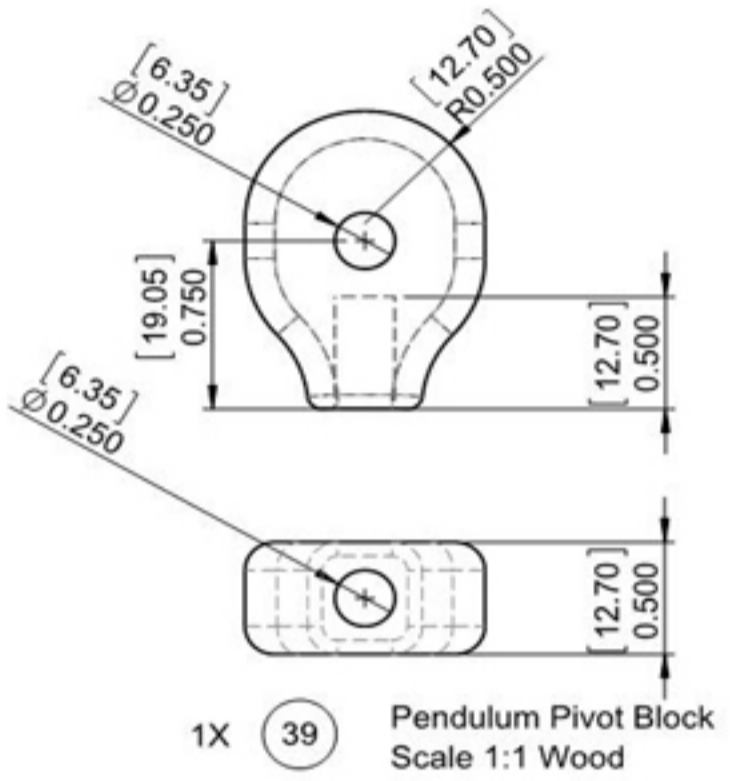


Sht10 of 1 Shts	A2	Law Wooden Clock 24 - Gravity escapement V3	
Not to Scale Unless otherwise stated		All dimensions in mm and (inches) 3rd Angle projection	Designed by: Brian law www.woodenclocks.co.uk July 2015

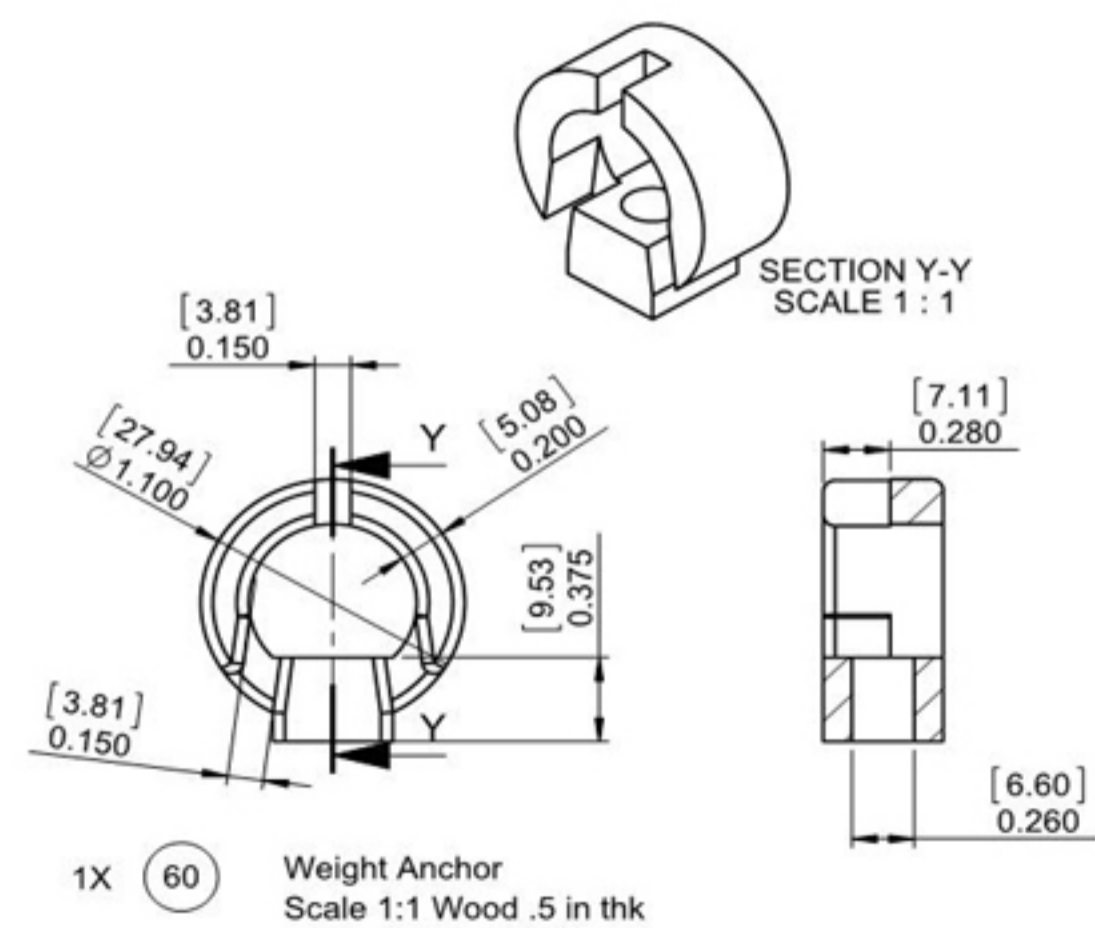
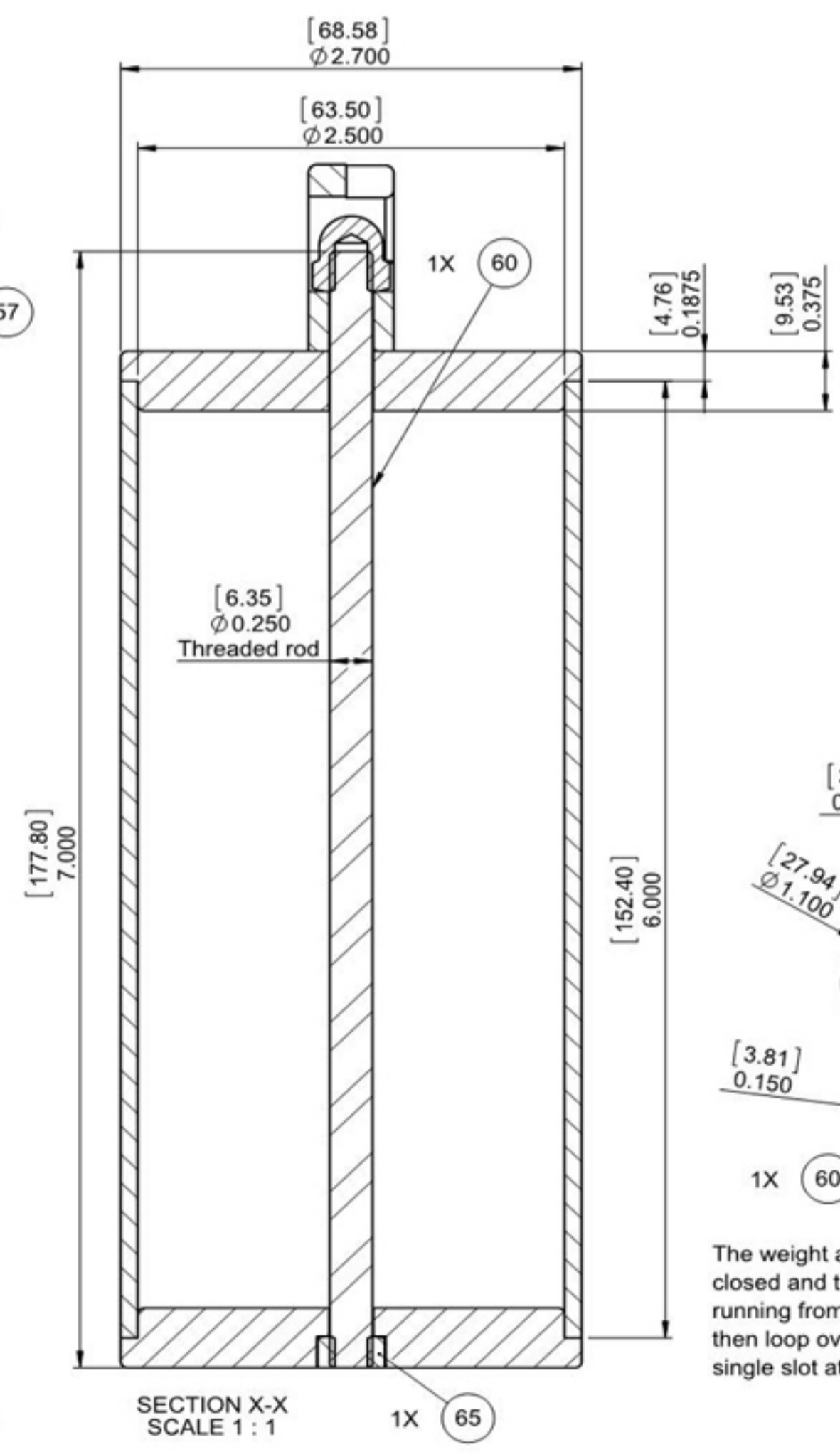
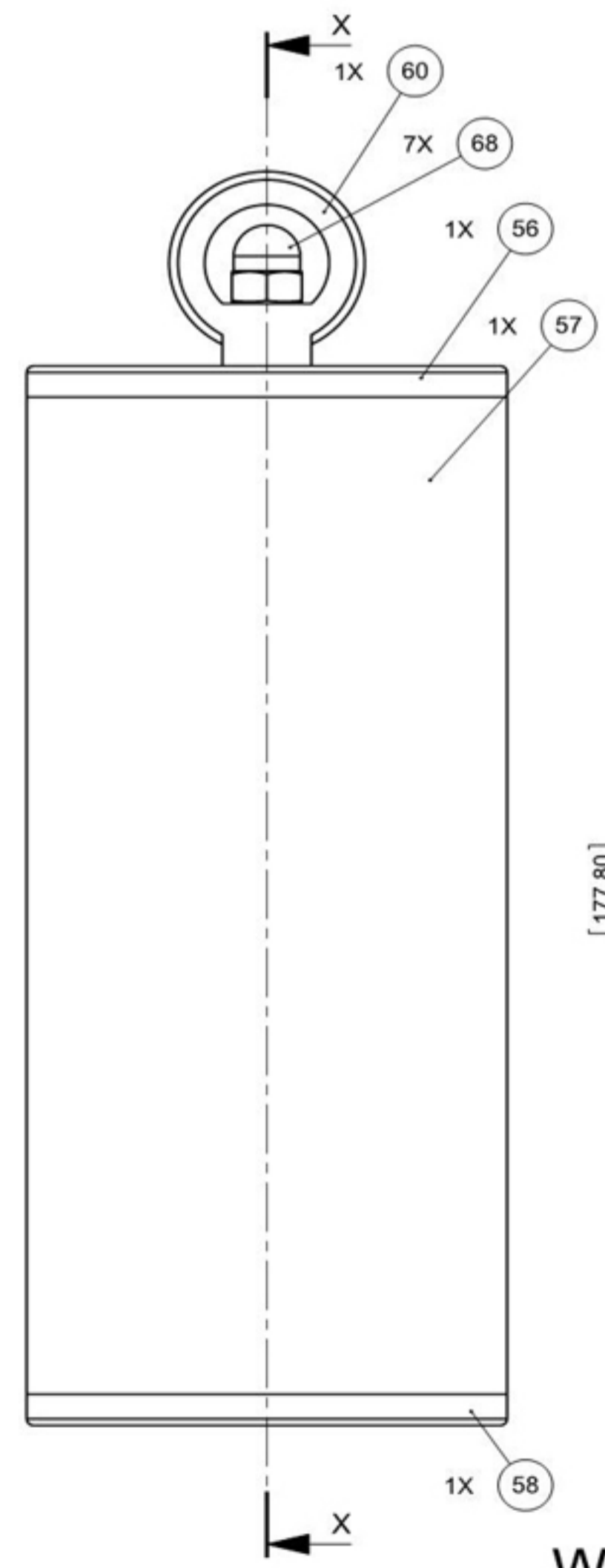
Pendulum Assembly



SECTION Z-Z
SCALE 1 : 2.5



May be made in 2 parts with square hole through as shown, or as one peice with Round hole.



The weight anchor shown above is used both to secure the assembly closed and to attach the cord to. A loop is tied in the bottom of the cord running from the drum using a Bowline knot so that it will not slip, and then loop over the circle form into the slots at the bottom and out of the single slot at the

Weight Assembly

You will need to fill the inside of the cylinder with lead up to the the weight you have determined previously is necessary to run the clock. The lead can be in the the form of lead shot or perhaps the cylindrical weights used for sash type windows.

Sht#1 of 11Shts	A2	Law Wooden Clock 24 - Gravity escapement V3	
Not to Scale Unless otherwise stated		All dimensions in mm and (inchs) 3rd Angle projection	Designed by: Brian law www.woodenclocks.co.uk July 2015