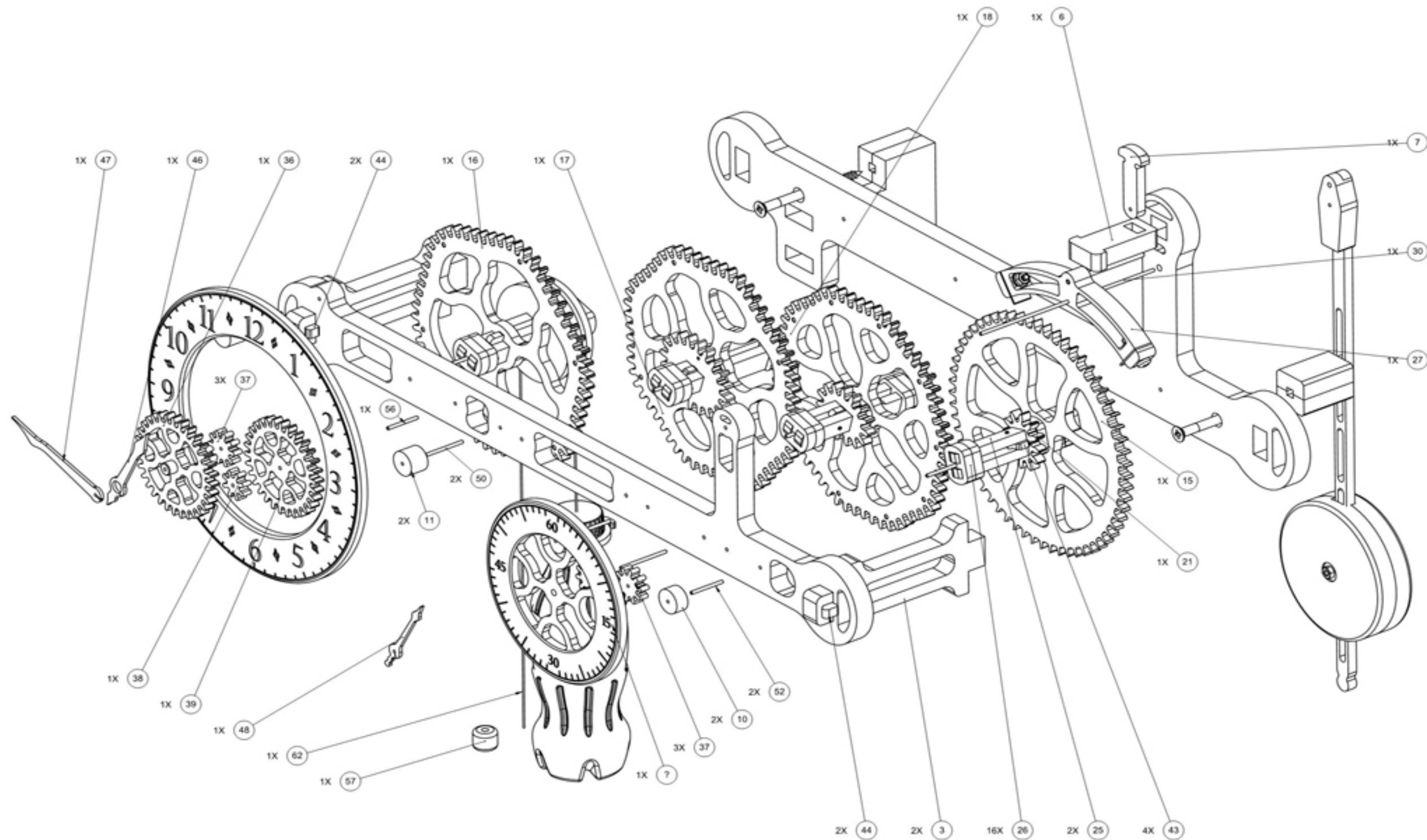


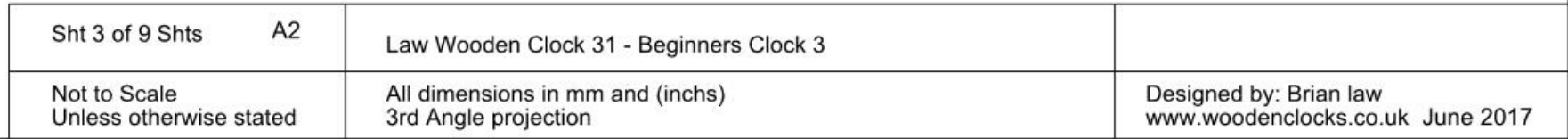
ITEM NO.	PART NUMBER	DESCRIPTION	QTY.
1	Clock 31 Back Frame	Wood 12mm thk	1
2	Clock 31 Front Frame	Wood 12mm thk	1
3	Clock 31 Frame Spacer	Wood 12mm thk	2
4	Clock 31 Wall Spacer	Wood 12mm thk	1
5	Clock 31 Wall Spacer-long	Wood 12mm thk	1
6	Clock 31 Rear Support	Wood 12mm thk	1
7	Clock 31 Pendulum Hanger-Rear	Wood 6mm thk	1
8	Clock 31 Dial	Wood 6mm thk	1
9	Clock 31 Seconds Dial	Wood 6mm thk	1
10	Clock 31 Seconds Dial Spacer	Wood 8mm thk	2
11	Clock 31 Dial Spacer	Wood 12mm thk	2
12	Clock 31 Drum side	Wood 6mm thk	2
13	Clock 31 Drum Centre	Wood 6mm thk	1
14	Clock 31 Gear Spacer-6	Wood 6mm thk	3
15	Clock 31 Escape Wheel 60T	Wood 6mm thk	1
16	Clock 31 Gear-60T 0-8ratio-6 repeats	Wood 6mm thk	1
17	Clock 31 Gear-60T 0-8ratio-8 repeats	Wood 6mm thk	1
18	Clock 31 Gear-60T 0-8ratio-10 repeats	Wood 6mm thk	1
19	Clock 31 Gear-20T 0-8ratio	Wood 6mm thk	1
20	Clock 31 Gear-15T 0-8ratio	Wood 6mm thk	1
21	Clock 31 Gear-12T 0-8ratio	Wood 6mm thk	1
22	Clock 31 Shaft 1 Side	Wood 6mm thk	2
23	Clock 31 Shaft 2 Side	Wood 6mm thk	2
24	Clock 31 Shaft 3 Side	Wood 6mm thk	2
25	Clock 31 Shaft 4 Side	Wood 6mm thk	2
26	Clock 31 Shaft Disk	Wood 6mm thk	16
27	Clock 31 Escapement	Wood 12mm thk	1
28	Clock 31-Pallet	Plastic 1mm	2
29	Clock 31 Escapement-Clamp	Wood 6mm thk	2
30	Clock 31 Pendulum Pivot	Steel Ø2mm	1
31	Clock 31 Pendulum Head	Wood 12mm thk	1
32	Clock 31 Pendulum Rod	Wood 6mm thk	1
33	Clock 31 Pendulum Bob	Wood 12mm thk	1
34	Clock 31 Pendulum Bob	Wood 12mm thk	1
35	Clock 31 Pendulum Bob Bush	Wood 8mm thk	1
36	Clock 31 Hour Gear 32 Teeth	Wood 6mm thk	1
37	Clock 31 Gears 10 Teeth	Wood 6mm thk	3
38	Clock 31 Hour Gear 8 Teeth	Wood 6mm thk	1
39	Clock 31 Hour Gear 30 Teeth	Wood 6mm thk	1
40	Clock 31 Hour Tube	Wood 12mm thk	1
43	Clock 31 Wedge-small	Wood 4mm thk	4
44	Clock 31 Wedge	Wood 6mm thk	2
45	Clock 31 Bottle Hanger	Wood 4mm thk	1
46	Clock 31 Hour Hand	Plastic 2mm Thk	1
47	Clock 31 Minute Hand	Plastic 2mm Thk	1
48	Clock 31 Seconds Hand	Plastic 2mm Thk	1
49	Clock 31 Pendulum Pin	Steel Ø3mm	1
50	Clock 31 Dial Pin	Steel Ø2mm	2
51	Clock 31 Pivot Pin-33	Steel Ø2mm	2
52	Clock 31 Dial Pin-short	Steel Ø2mm	2
53	Clock 31 Pivot Pin-18	Steel Ø2mm	6
54	Clock 31 Pivot Pin-48	Steel Ø2mm	1
55	Clock 31 Locking Pin	Steel Ø2mm	4
56	Clock 31 Hour Gear Pivot	Steel Ø2mm	1
57	Clock 31 Counter Weight	30 grms	1
58	Screw PAN Head M4 x 26		1
59	Screw PAN Head-M4 x 20		2
60	Washer M4	Brass or Delrin	2
61	Nut M4		3
62	Weight Cord	Ø2mm Cord	1
63	Woodscrew_No4_5x60	Brass	2

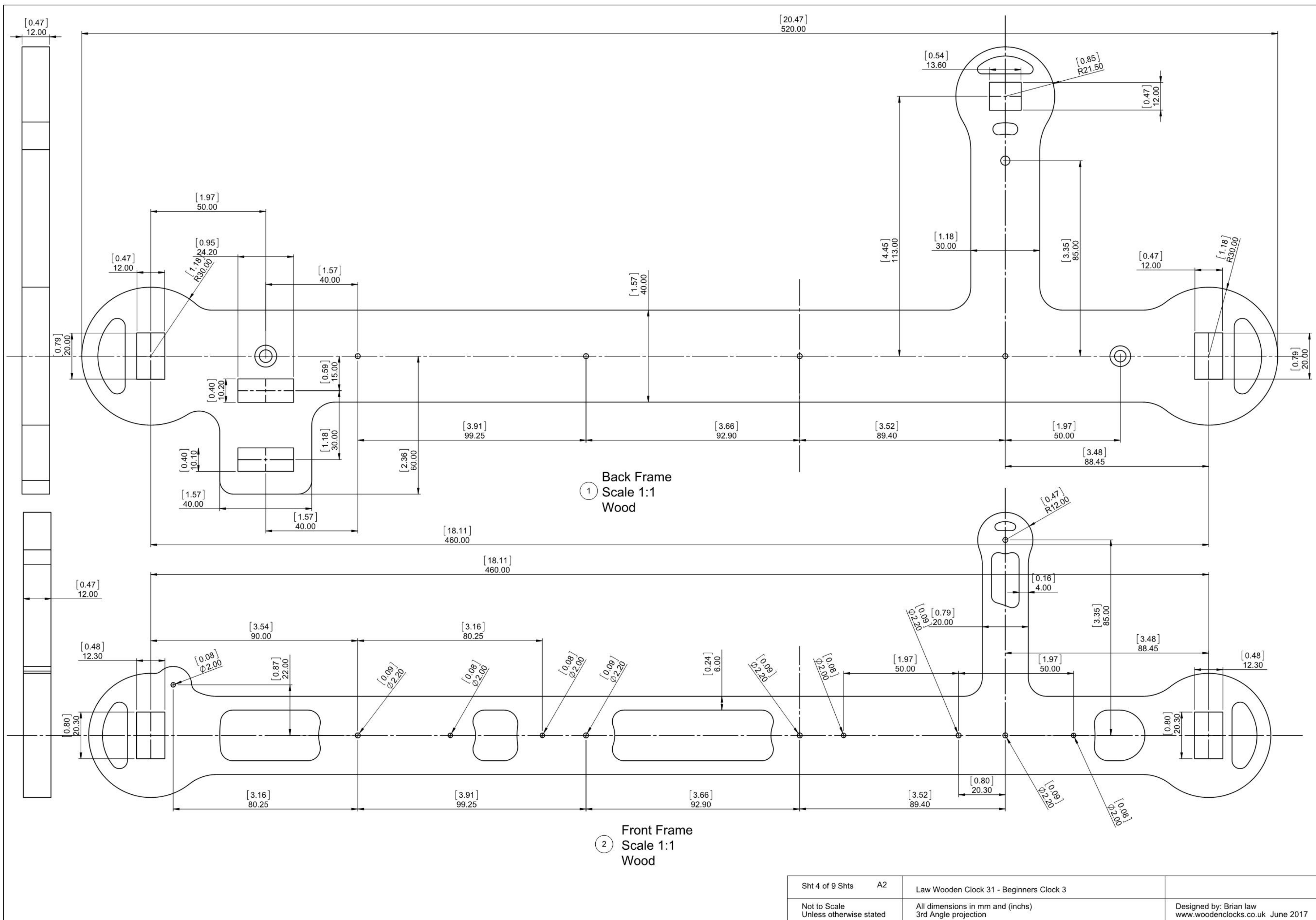
Law Wooden Clock 31 - Beginners Clock 3

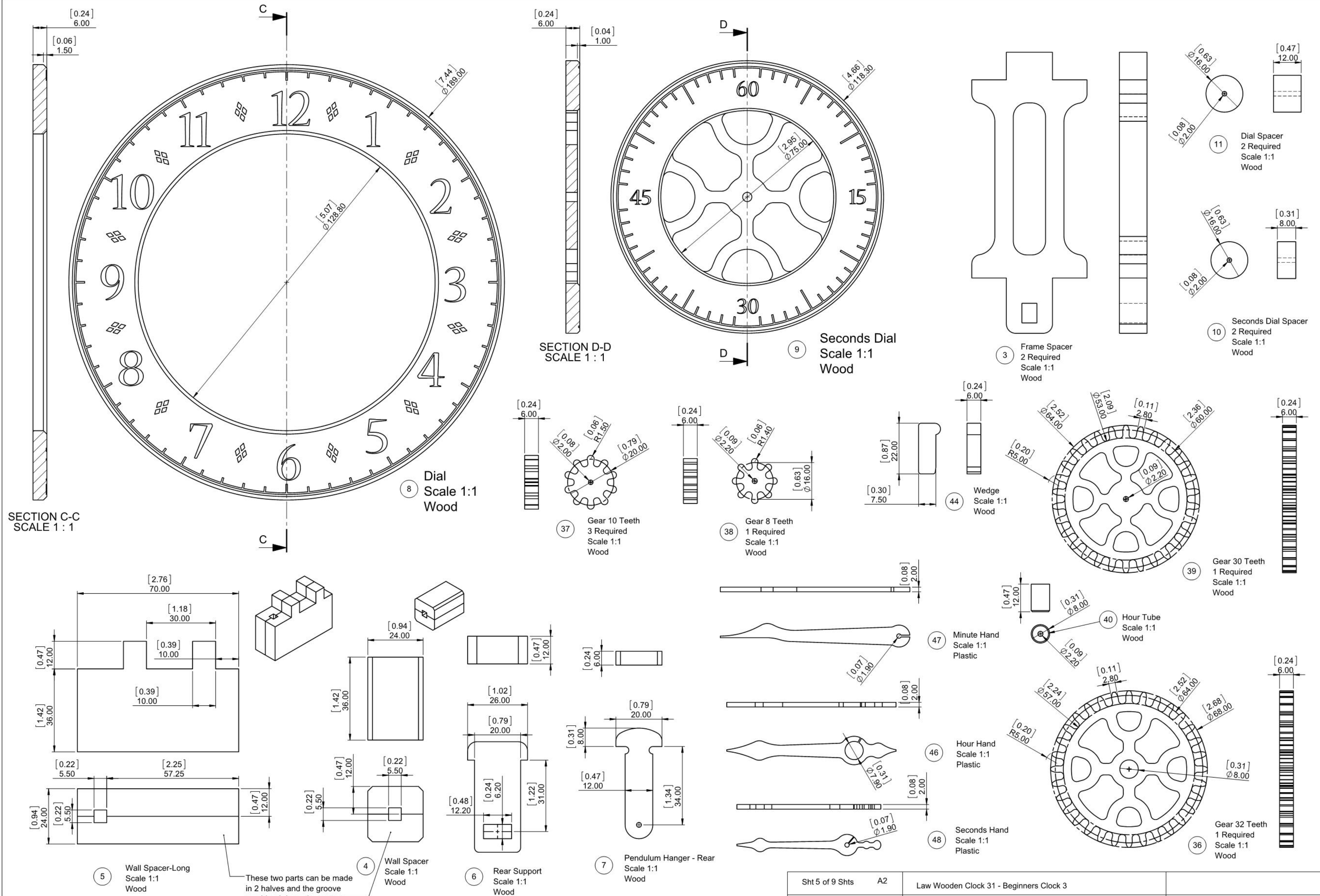
All dimensions in mm and (inches)
3rd Angle projection

Designed by: Brian law
www.woodenclocks.co.uk June 2017

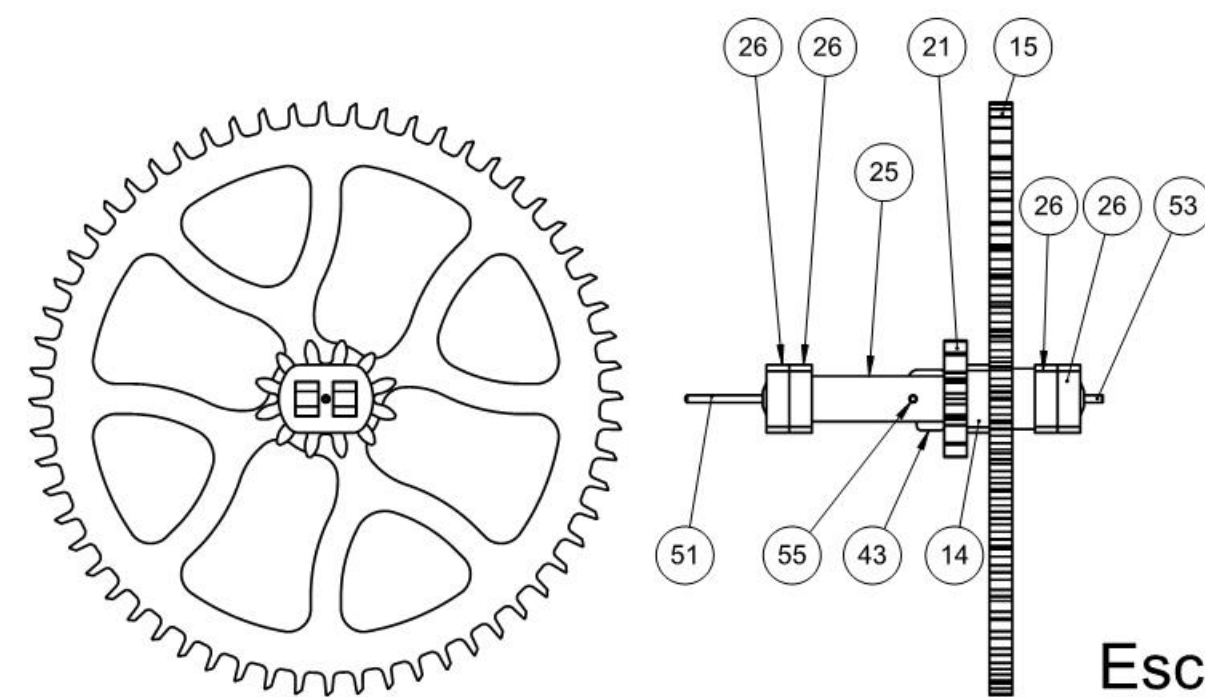




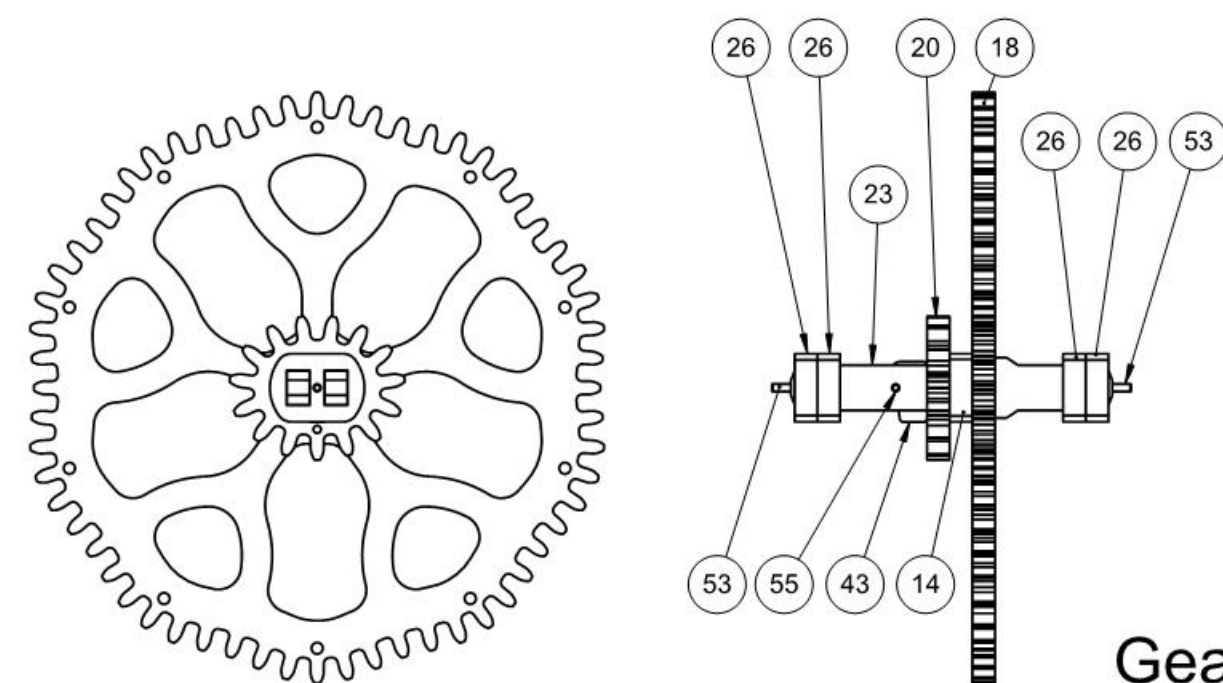




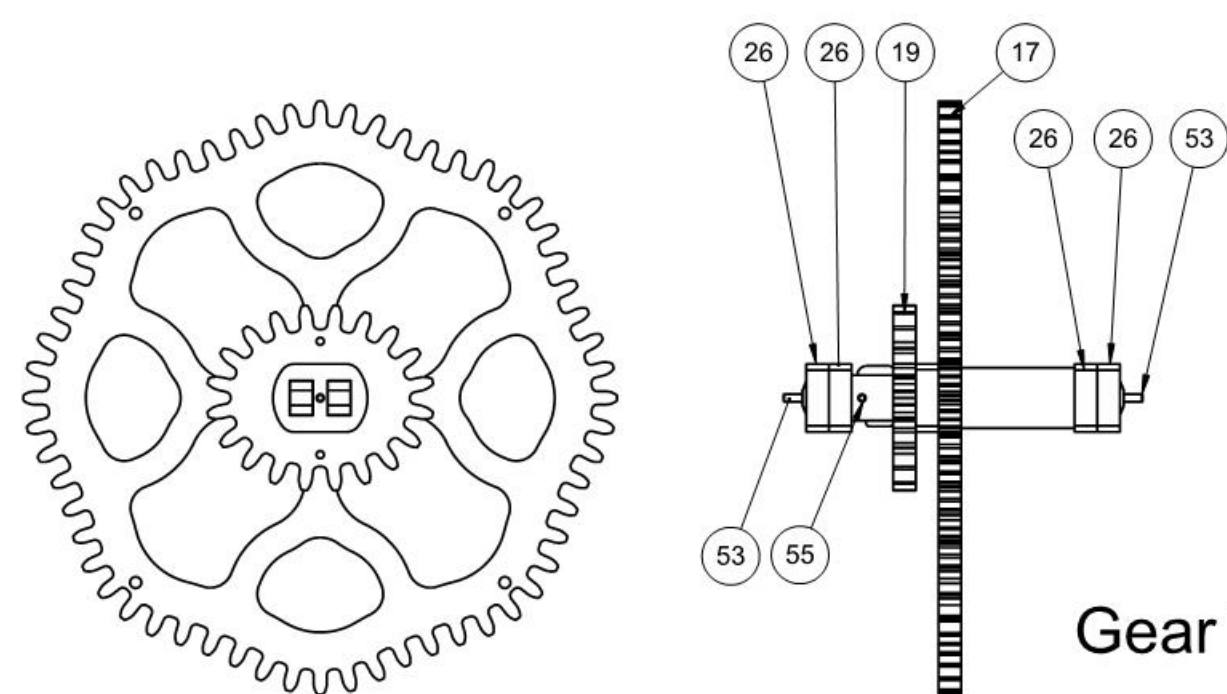
Sht 5 of 9 Shts	A2	Law Wooden Clock 31 - Beginners Clock 3	
Not to Scale Unless otherwise stated		All dimensions in mm and (inches) 3rd Angle projection	Designed by: Brian law www.woodenclocks.co.uk June 2017



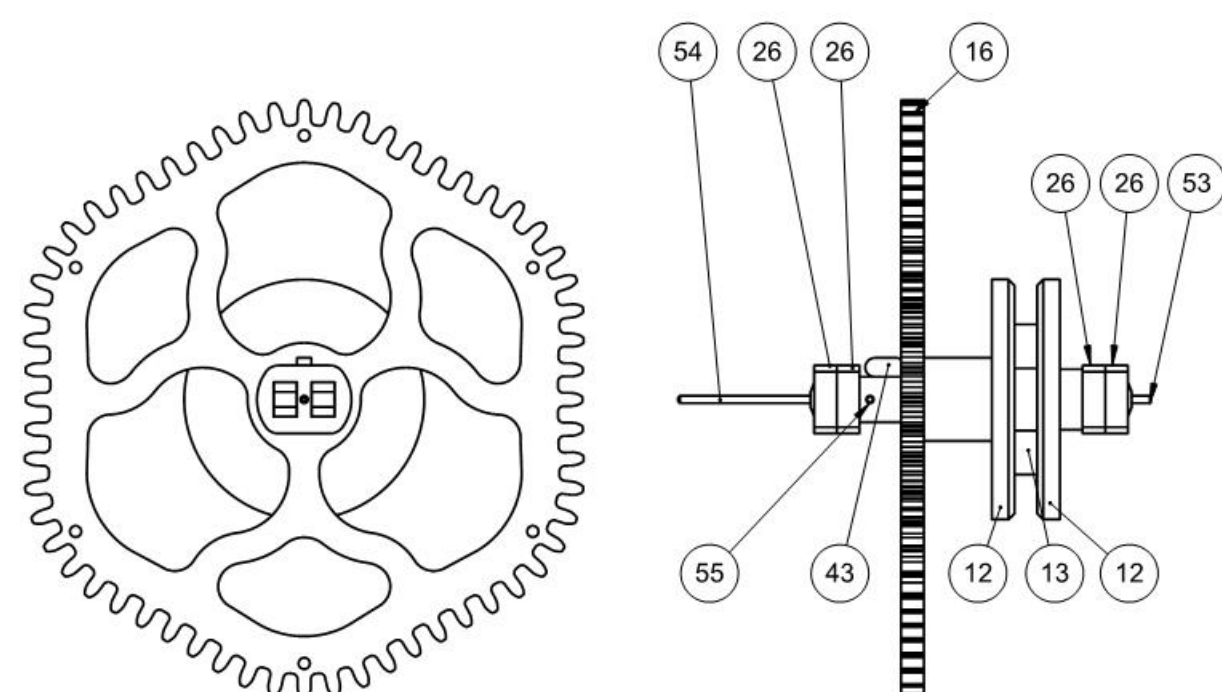
Escape Wheel Assembly



Gear Train 2

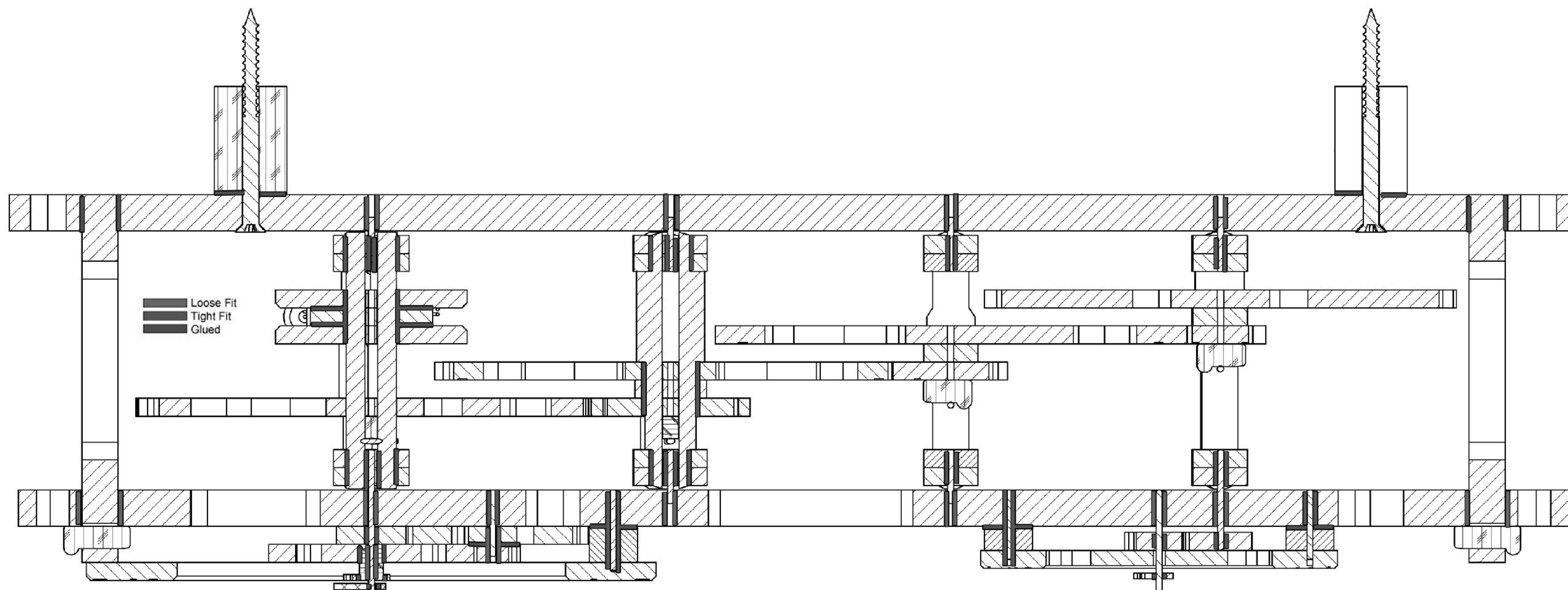


Gear Train 1



Drive Assembly

Sht 7 of 9 Shts	A2	Law Wooden Clock 31 - Beginners Clock 3	
Not to Scale Unless otherwise stated		All dimensions in mm and (inches) 3rd Angle projection	Designed by: Brian law www.woodenclocks.co.uk June 2017



The section shown above is taken through the centre of the clock and shows all the shafts and the type of fits required.

The clock is shown laying down horizontally with the back frame at the bottom and the front frame at the top.

Each of the joints is shown in a colour to indicate the type of fit required, Green for a loose fit, Blue for a tight fit and Red for items needed to be glued. It is best to glue all of the parts for the Back frame together for a start.

Next assemble the Gear shafts making sure that the parts are a tight fit on the side plates, if there is any looseness here then it is best to glue thes together as well. All the shafts should be a loose fit in the holes in the front and back frames, if not then you will need to open the holes out slightly.

The only other places you will need to glue are the Carbon fibre rod into the pendulum head and the two sides of the drum to the centre section.

Sht 9 of 9 Shts	A2	Law Wooden Clock 31 - Beginners Clock 3	
Not to Scale Unless otherwise stated		All dimensions in mm and (inches) 3rd Angle projection	Designed by: Brian law www.woodenclocks.co.uk June 2017