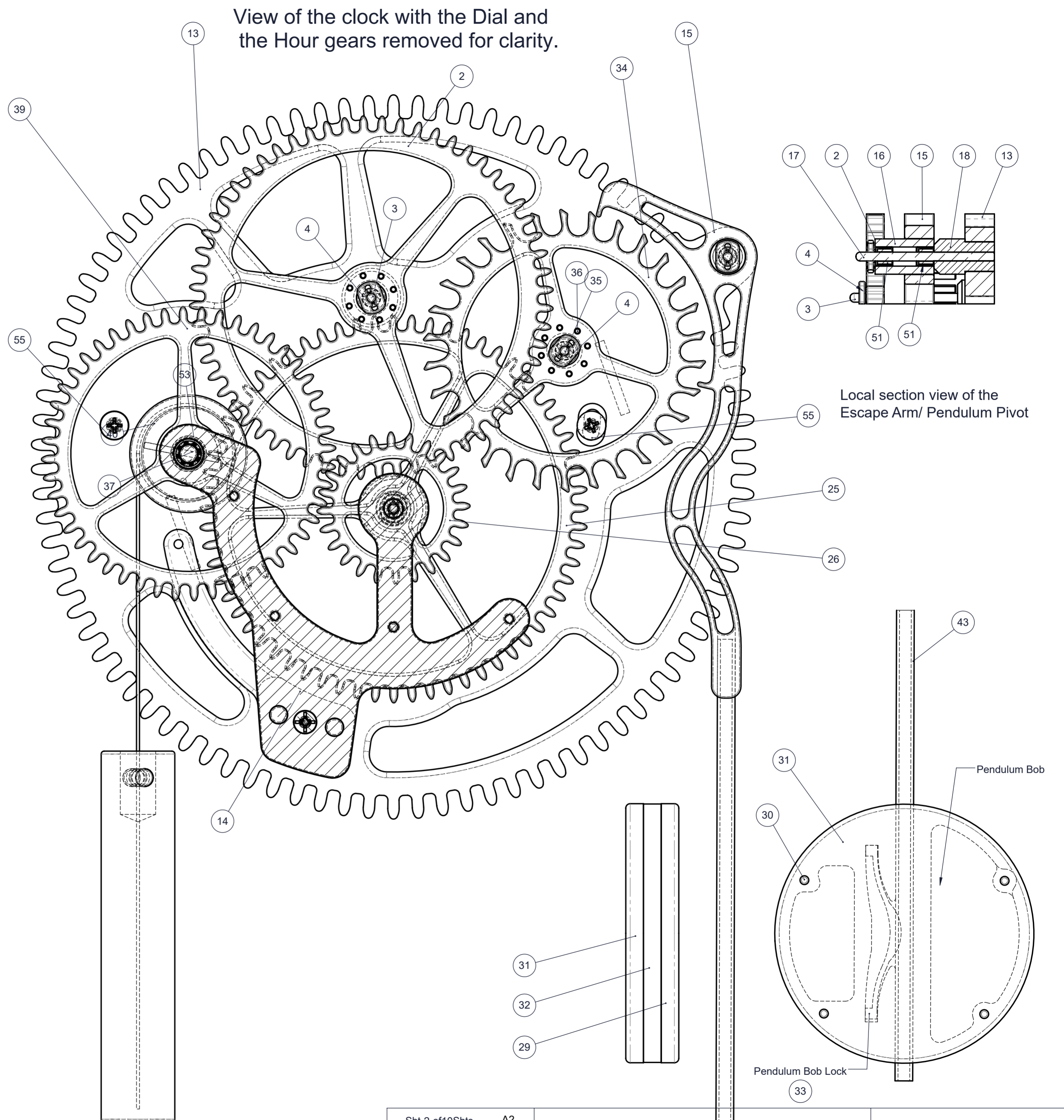
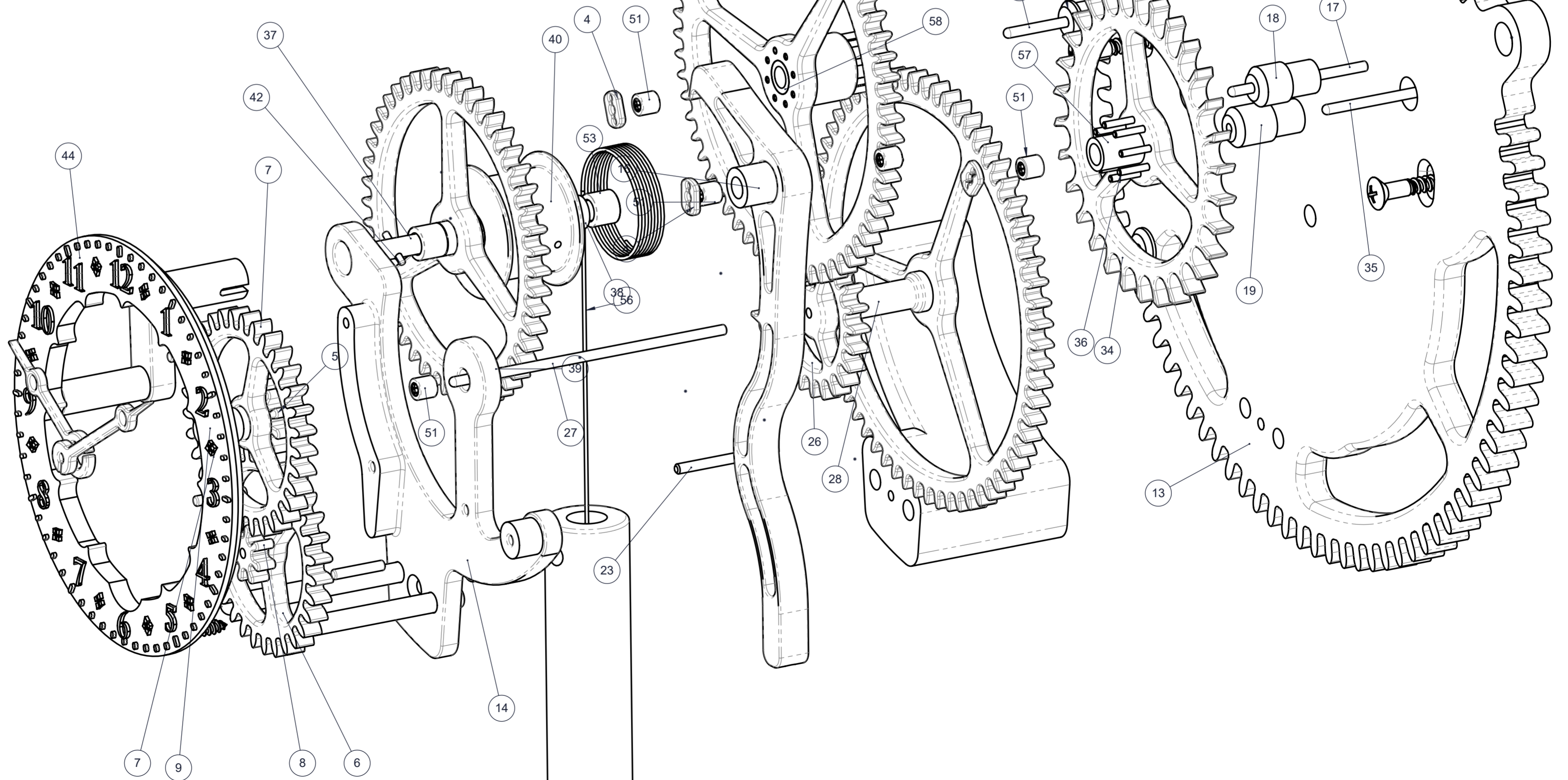
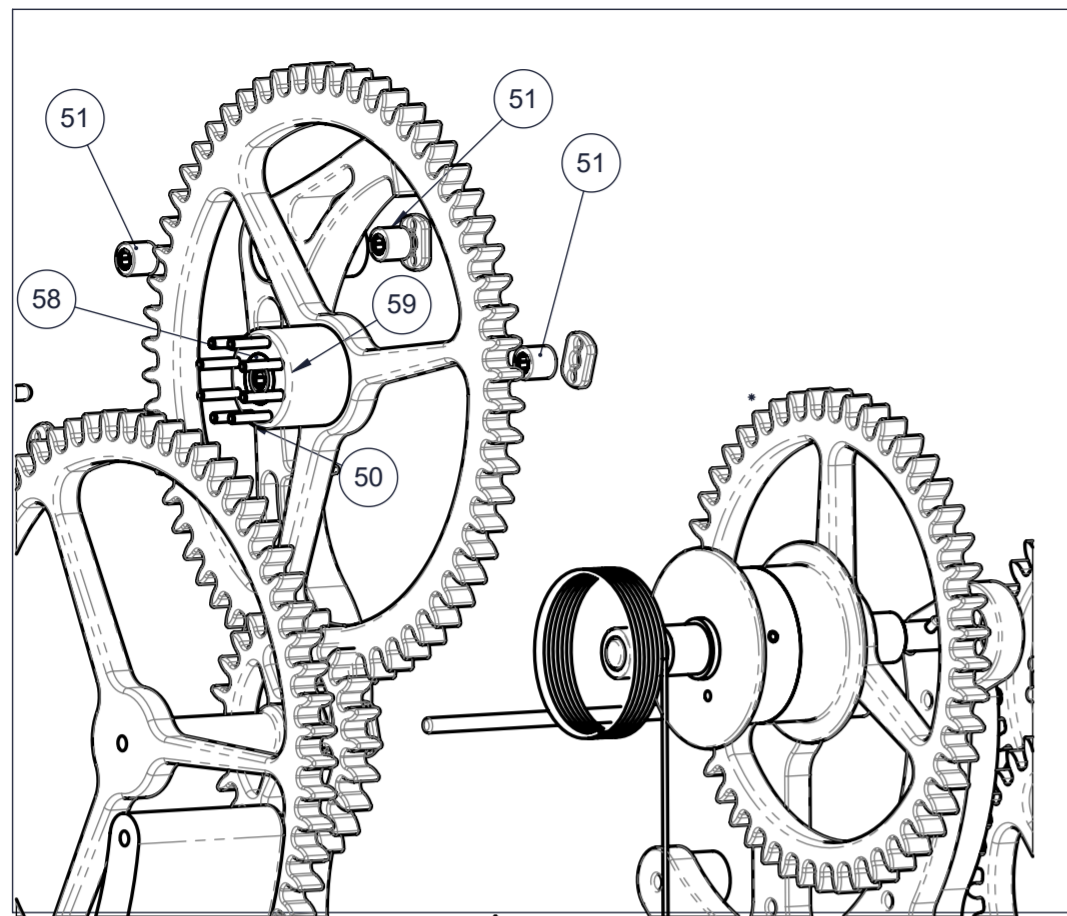


SECTION K-K

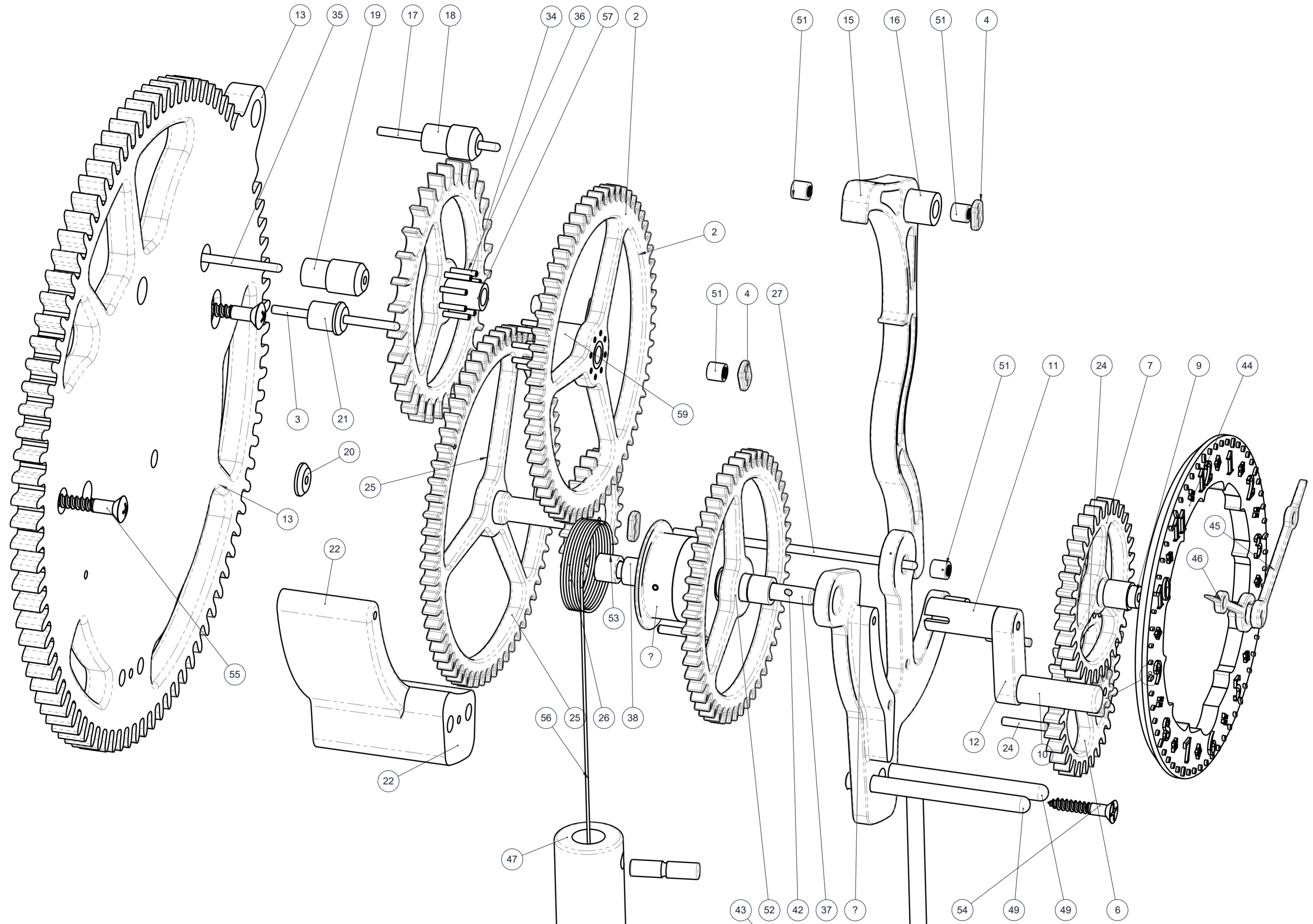
Sht 1 of 10Shts	A2	Clock 51 - Skeleton Clock
Not to Scale Unless otherwise stated		All dimensions in mm and (inches) 3rd Angle projection
		March 2023 Designed by: Brian Iaw www.woodenclocks.co.uk

ITEM NO.	PART NUMBER	DESCRIPTION	QTY.
2	Clock-51-Gear-60-Teeth	Wood 6mm thk	1
3	Clock-51-Geartrain-Pivot-2	Steel Rod Ø3 mm x 49mm	1
4	Clock-51-Shaft-Retainer -2	Plastic 2 mm thk	4
5	Clock-51-Hour-Gears-10-Teeth	Wood 6mm thk	1
6	Clock-51-Hour-Gears-30-Teeth	Wood 6mm thk	1
7	Clock-51-Hour-Gears-32-Teeth	Wood 6mm thk	1
8	Clock-51-Hour-Gears-8-Teeth	Wood 6mm thk	1
9	Clock-51-Hour-Tube	Wood Ø10	1
10	Winder - Handle	Wood	1
11	Winder - Tie	Wood	1
12	Winder - Key	Wood	1
13	Clock-51-Back-Frame	Wood 10 mm thk	1
14	Clock-51-Front Frame	Wood 6mm thk	1
15	Clock-51-Escape-Arm	Wood 10 mm thk	1
16	Clock-51-Escape-Arm-Sleeve	Wood ØA5 12 mm	1
17	Clock-51-Pendulum Pivot	Steel rod Ø3 mm x 50mm	1
18	Clock-51-Pivot Sleeve	Wood	1
19	Clock-51-Pivot Sleeve-2	Wood Ø12 mm	1
20	Clock-51-Pivot Sleeve-3	Wood Ø12 mm	1
21	Clock-51-Pivot Sleeve-4	Wood Ø12 mm	1
22	Clock-51-Frame Spacer	Wood 10 mm and 6 mm	1
23	Clock-51-Hour Gears Pivot	Steel Dowel Ø3mm x 18mm	1
24	Clock-51-Dial-Pin	Steel Pin Ø3	4
25	Clock-51-Gear-64-Teeth	Wood 6mm thk	1
26	Clock-51-Gear-24-Teeth	Wood 6mm thk	1
27	Clock-51-Geartrain-Pivot-1	Steel Pin Ø3	1
28	Clock-50-Gear-Spacer-1	Wood Ø12 mm	1
29	Clock-51-Pendulum-Bob-Bottom	Wood 6mm thk	1
30	Clock-51-Pendulum-Bob-Pin	Steel Pin Ø3 x18mm	4
31	Clock 51-Pendulum-Bob-Top	Wood 6mm thk	1
32	Clock-51-Pendulum-Bob-Centre	Wood 6mm thk	1
33	Clock-51-Pendulum-Bob-Lock	Plastic 6mm thk	1
34	Clock-51-Escape Wheel-30t	Wood 6mm thk	1
35	Clock-51-Geartrain-Pivot-3	Steel Pin Ø3	1
36	Lantern Pin -2	Steel Pin Ø2	8
37	Clock-51-Drive-Shaft	Brass Shaft -	1
38	Clock-51-Drive-Spacer-1	Wood Ø12 mm	1
39	Clock-51-Gear-48-Teeth	Wood 6mm thk	1
40	Clock-51-Drum	Wood 26 mm thk	1
41	Clock-51-Drum-Pin	Steel Pin	1
42	Clock-51-Winder-Pin-2	Steel Pin Ø3 mm x 26 mm	1
43	Clock-50-Pendulum Rod	Carbon Fibre -Ø6 x1000 mm long	1
44	Clock-51-Dial-Numbers	Wood 6 mm thk	1
45	Clock-51-Minute-Hand	Plastic 2 mm thk	1
46	Clock-51-Hour-Hand	Plastic 3 mm thkA5	1
47	Clock-50-Weight 730 grams each	Brass Ø38 x 110 mm	1
48	Clock-51-Weight Hanger pin-1	Brass Ø6	1
49	Clock-51-Pin-6-70	Steel Pin Ø6 x 70 mm	2
50	Lantern Pin -1	Steel Pin Ø2	8
51	Needle-Roller-Bearing-3X6.5X6	HK0306	8
52	Needle-Roller Bearing Clutch-6-10-12	HF0612	1
53	Needle-Roller Bearing Ø6 xØ10	HK0610	2
54	Woodscrew no8-1inch	Brass No 8 x 25 mm	1
55	WoodScrew-No-10x30mm	Brass No 10 x 30 mm	2
56	Weight Cord	Blind Cord Ø0.5 mm	1
57	Clock-51-Escape-Wheel-sleeve	Wood Ø10 mm	1
58	Clock-51-Gear-60-Sleeve	Wood Ø10 mm	1
59	Clock-51-Gear-60-Boss	Wood Ø10 mm	1

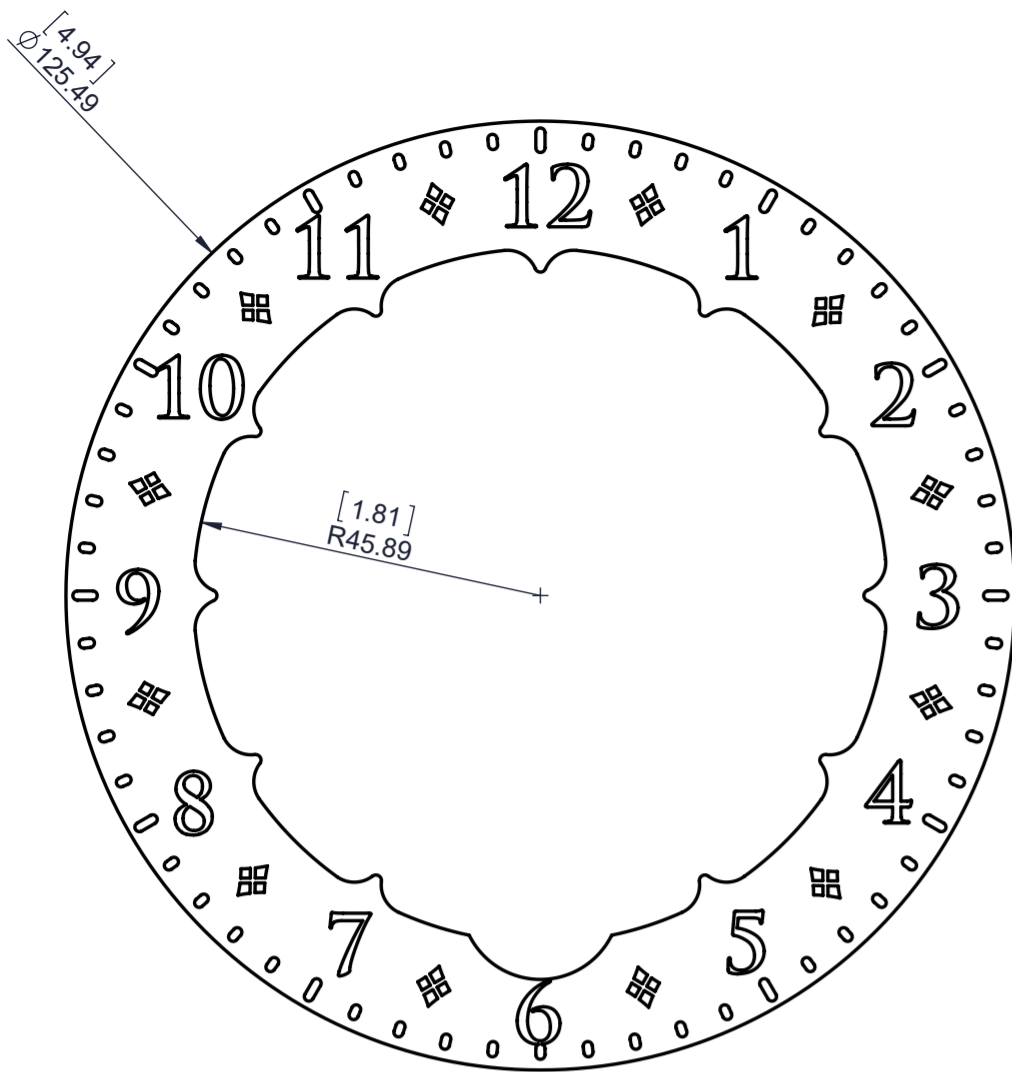




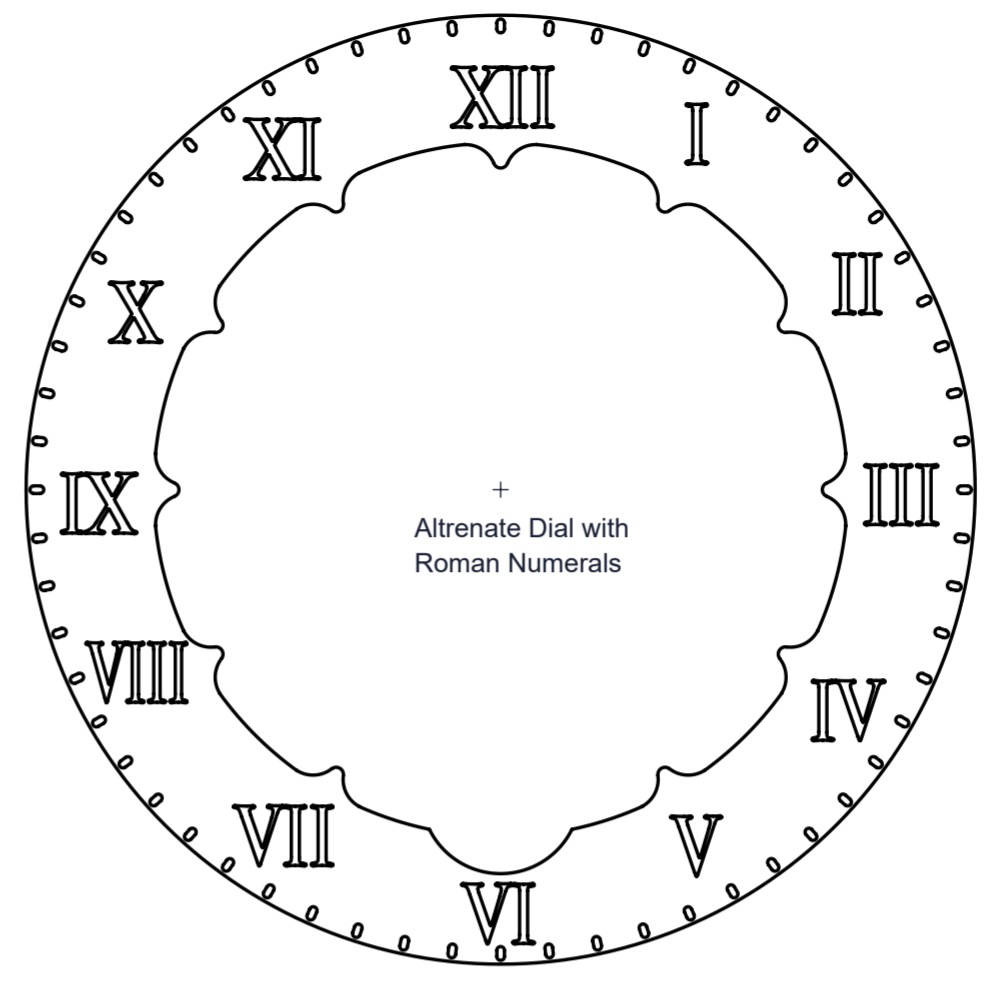
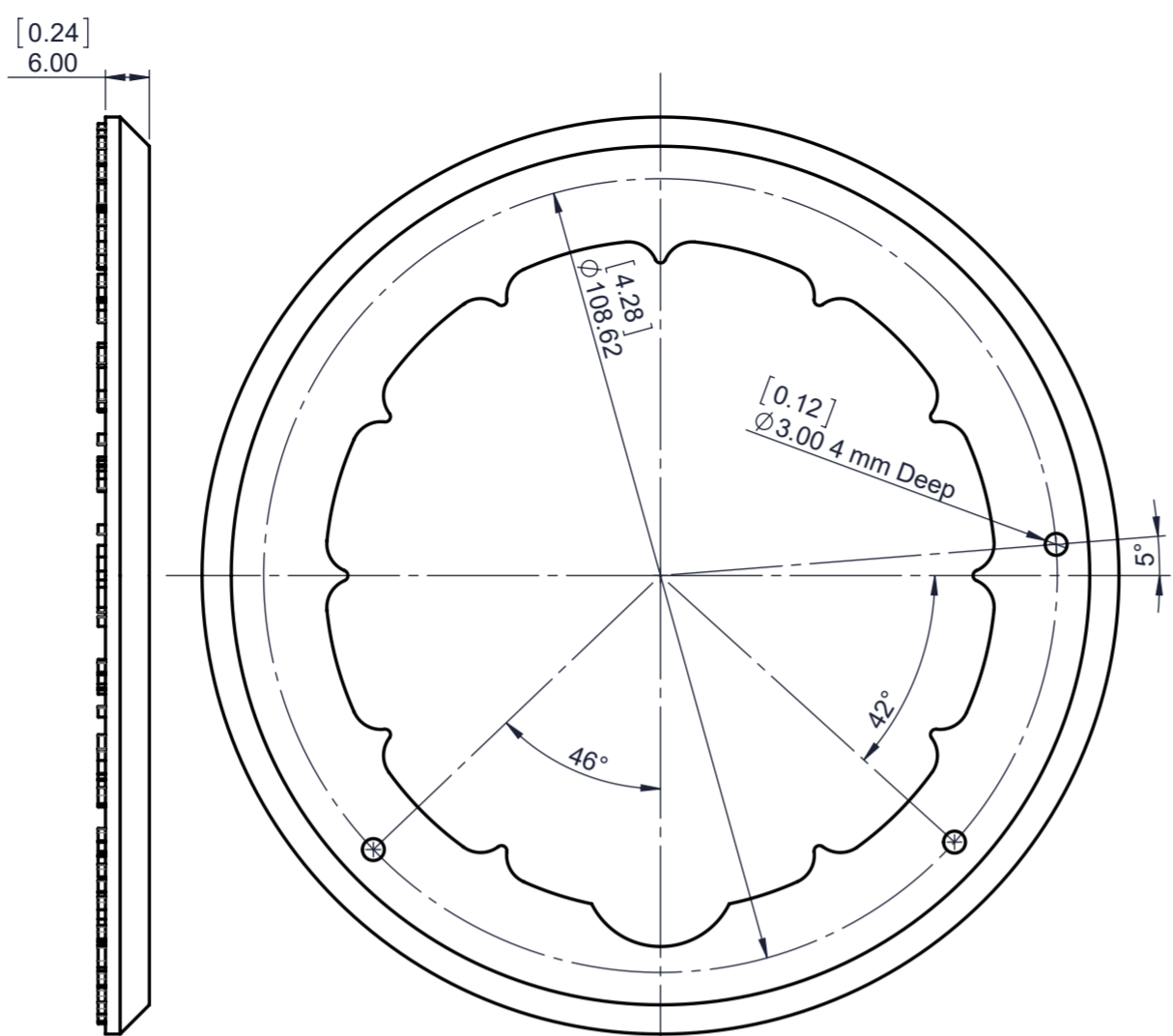
Sht 3 of 10 Shts	A2	Clock 51 - Skeleton Clock	
Not to Scale Unless otherwise stated		All dimensions in mm and (inches) 3rd Angle projection	Designed by: Brian Iaw www.woodenclocks.co.uk
		March 2023	



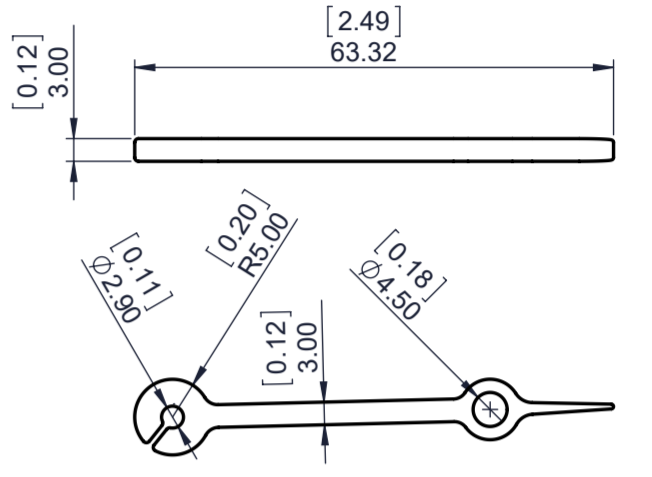
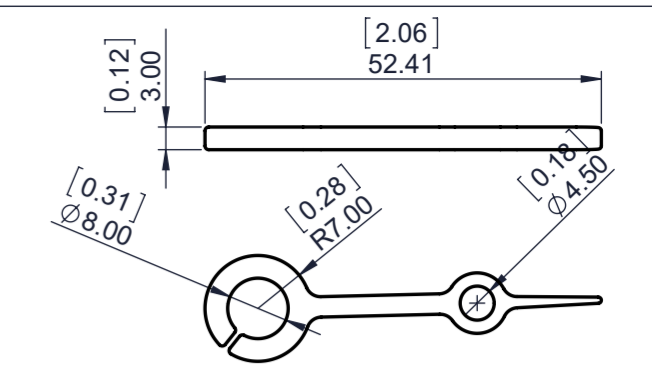
Sht 4 of 10 Shts	A2	Clock 51 - Skeleton Clock	
Not to Scale Unless otherwise stated		All dimensions in mm and (inches) 3rd Angle projection	Designed by: Brian Iaw www.woodenclocks.co.uk
		March 2023	



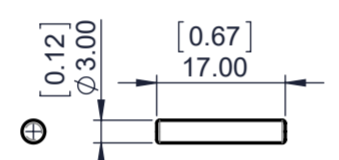
44 Dial
Wood 6 mm thick
Scale 1:1



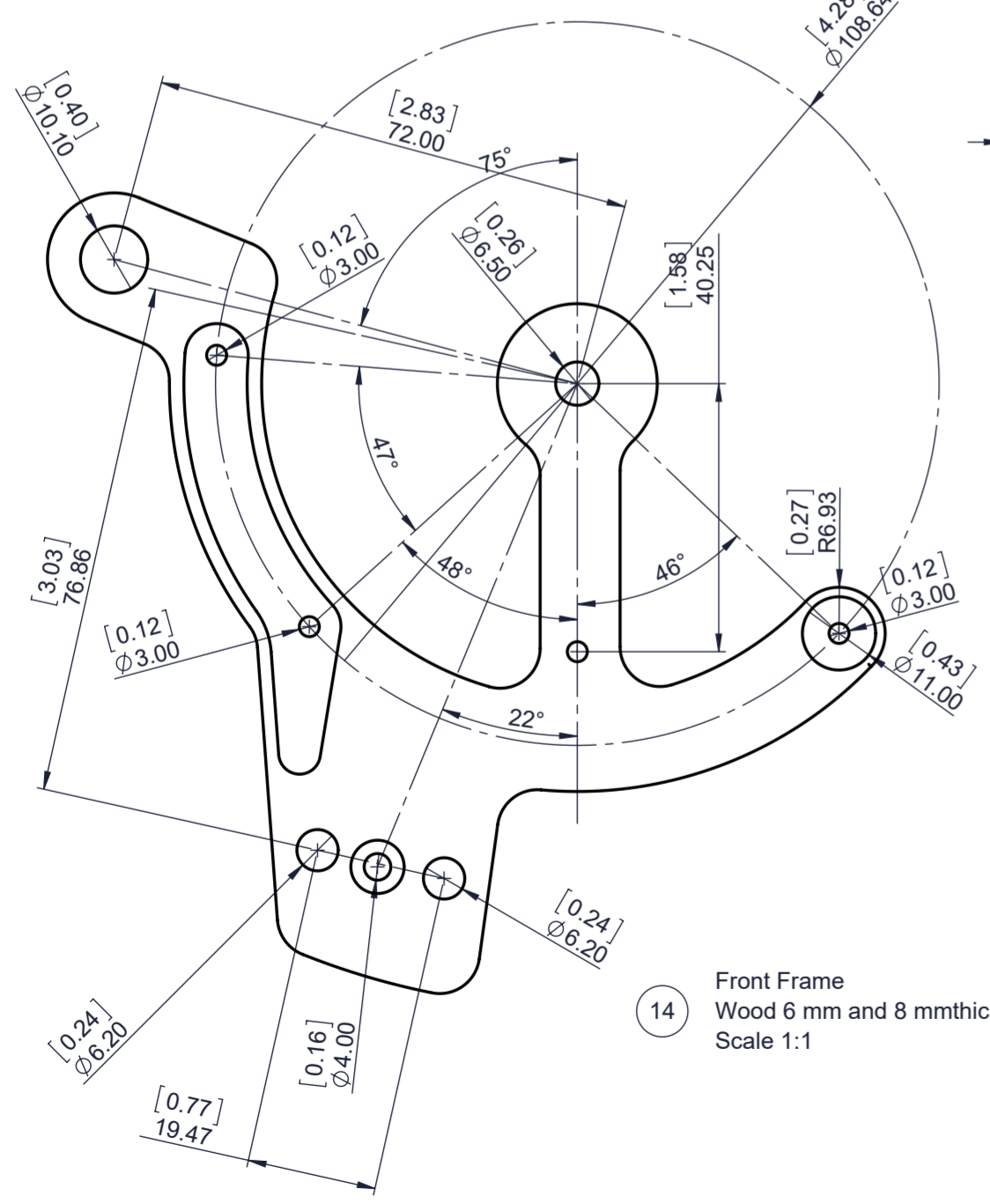
46 Hour Hand
Plastic
Scale 1:1



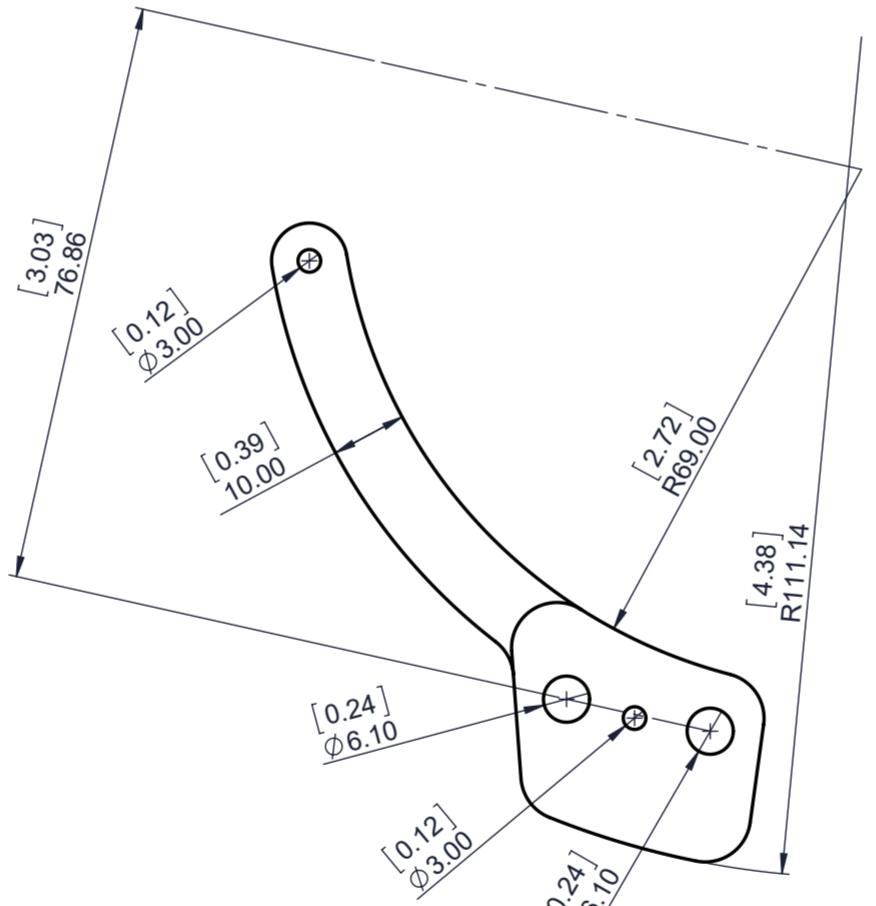
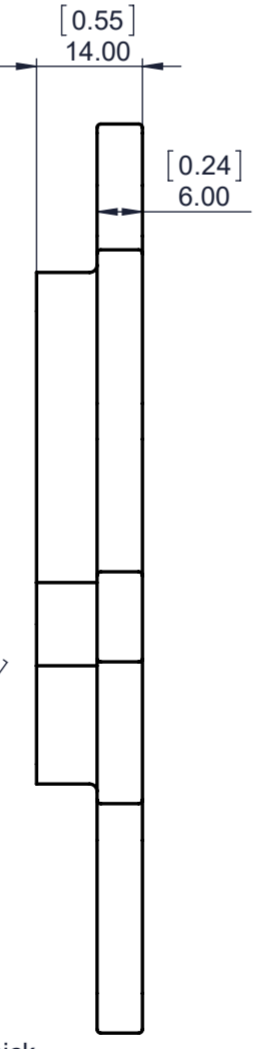
45 Minute Hand
Plastic
Scale 1:1



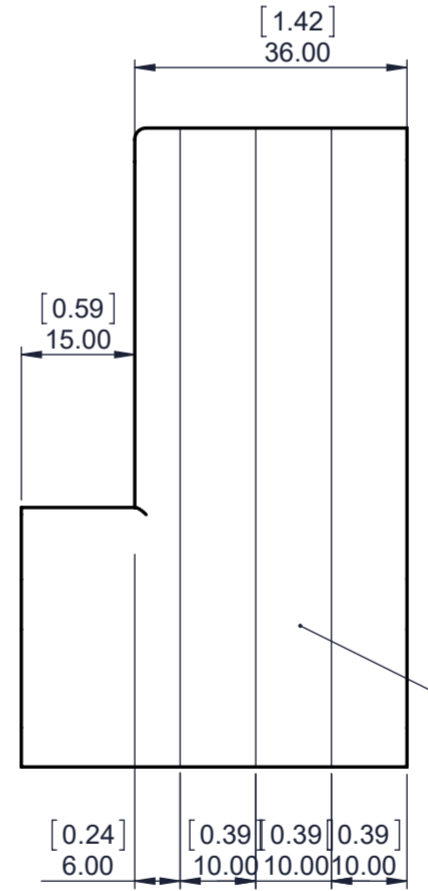
24 Dial Pin
Steel Pin
Scale 1:1
4 Required



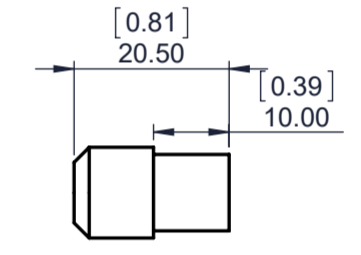
14 Front Frame
Wood 6 mm and 8 mm thick
Scale 1:1



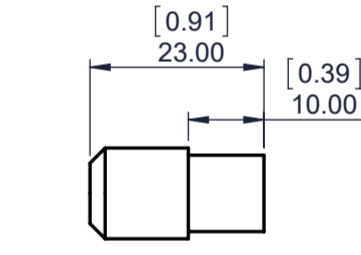
22 Frame Spacer
Wood Scale 1:1



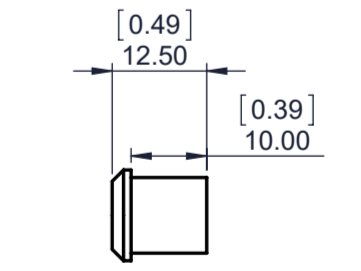
49 Pin-6-70
Steel Pin
Scale 1:1
2 Required



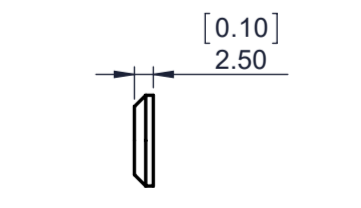
18 Pivot Sleeve
Wood Scale 1:1



19 Pivot Sleeve 2
Wood Scale 1:1

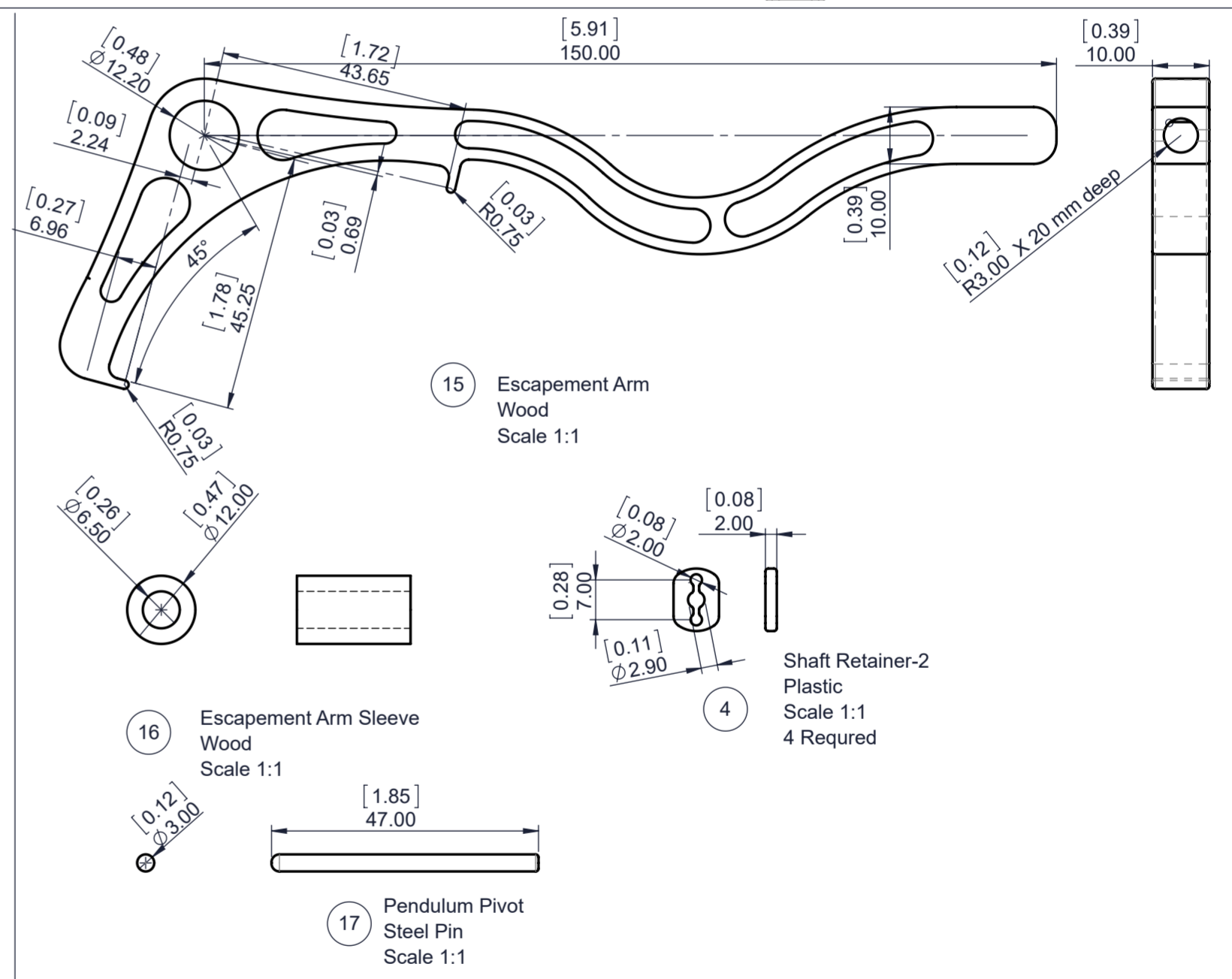
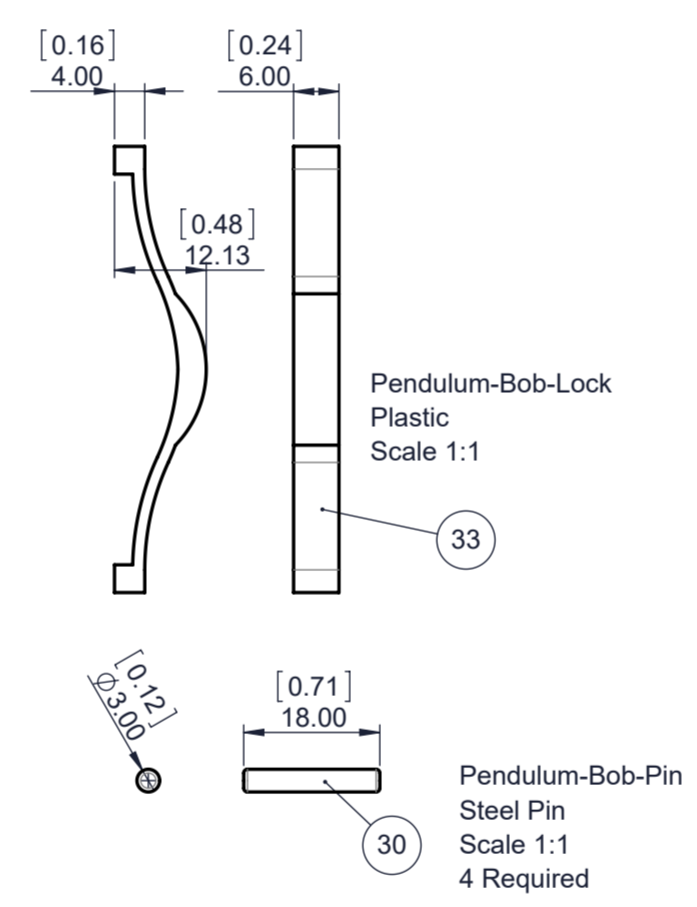
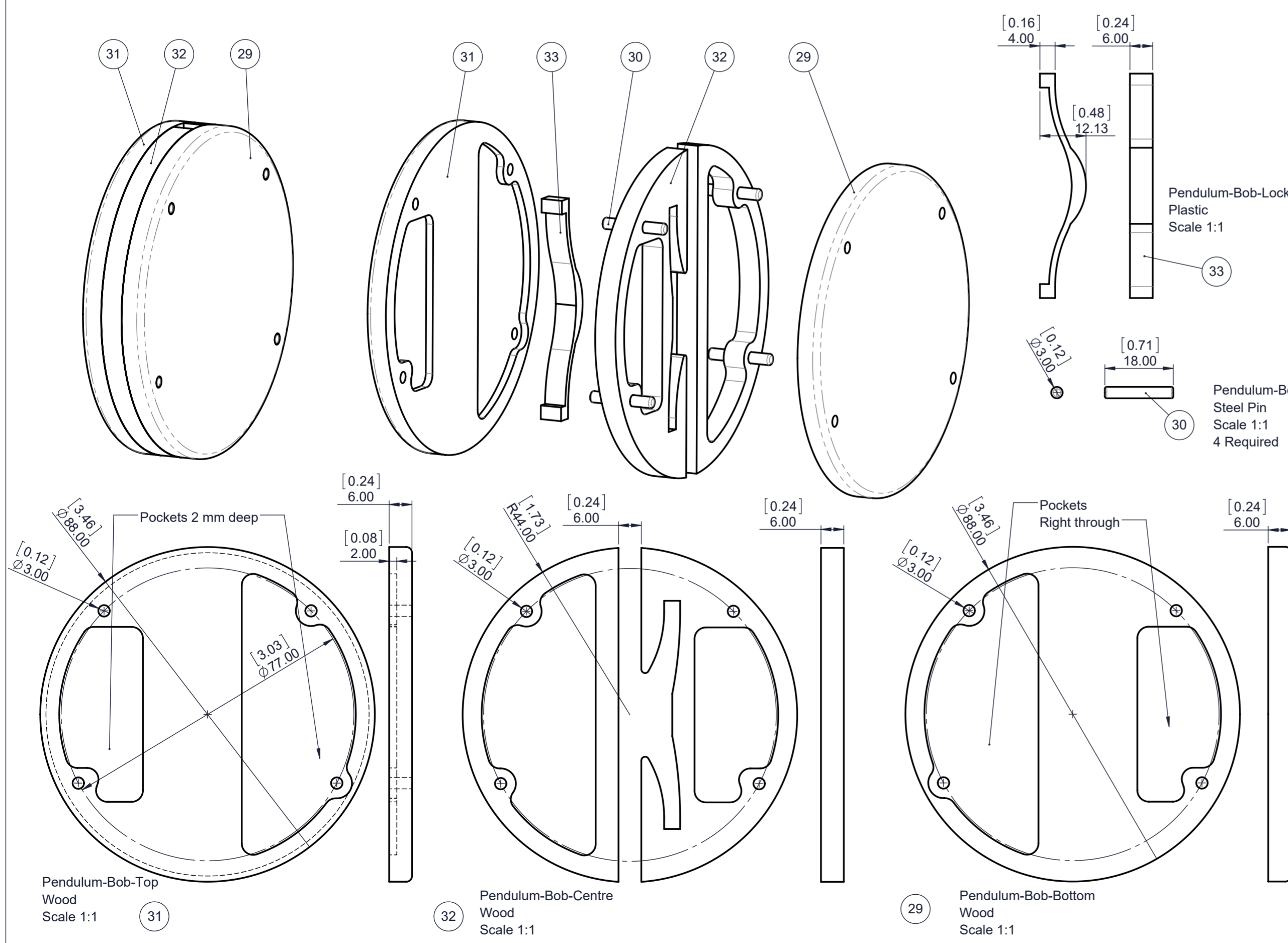
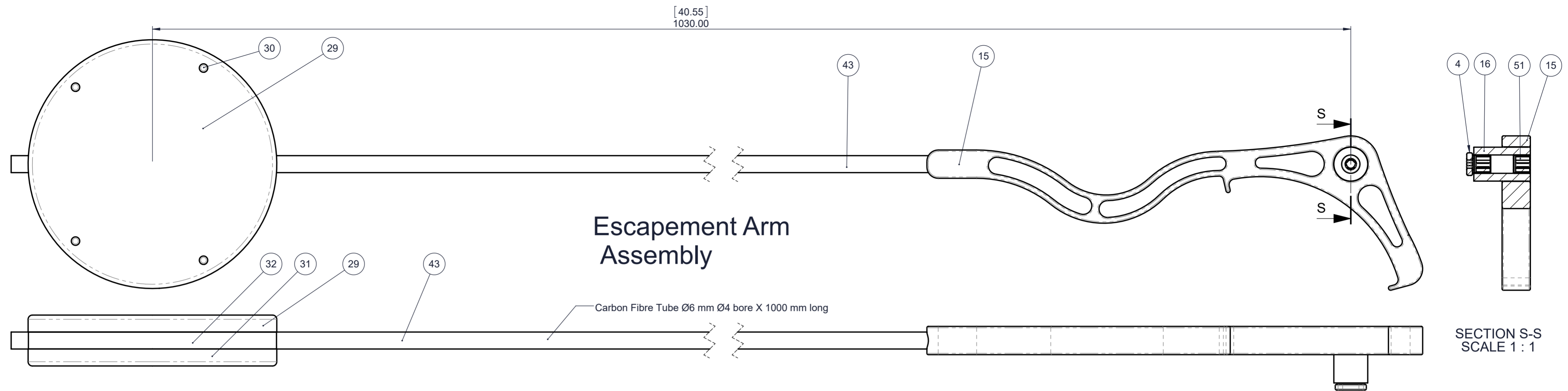


21 Pivot Sleeve 4
Wood Scale 1:1

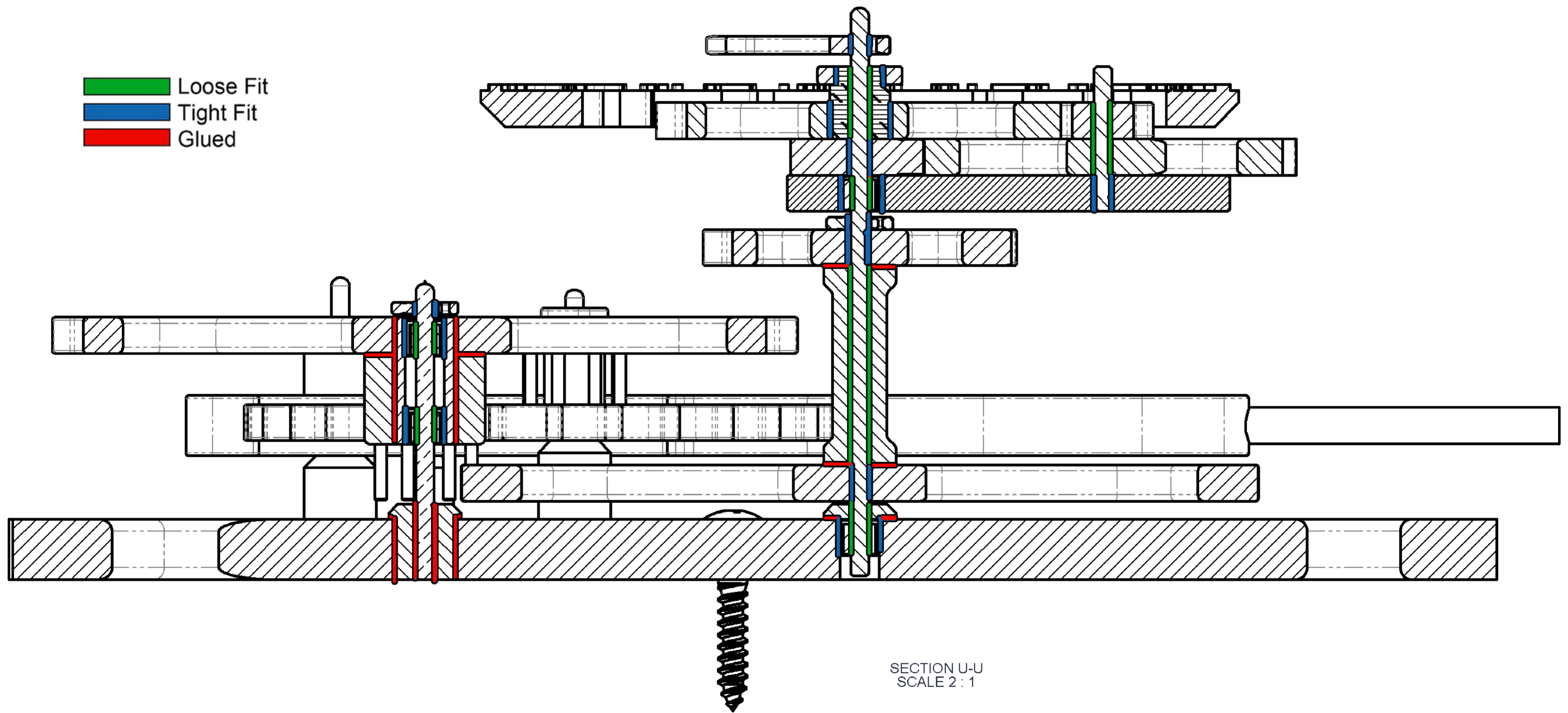


20 Pivot Sleeve 3
Wood Scale 1:1

Sht 5 of 10Shts	A2	Clock 51 - Skeleton Clock	
Not to Scale Unless otherwise stated		All dimensions in mm and (inches) 3rd Angle projection	Designed by: Brian law www.woodenclocks.co.uk
		March 2023	



Sht 9 of 10 Shts	A2	Clock 51 - Skeleton Clock	
Not to Scale Unless otherwise stated		All dimensions in mm and (inches) 3rd Angle projection	Designed by: Brian law www.woodenclocks.co.uk
		March 2023	



- Loose Fit
- Tight Fit
- Glued

Sht10 of 10Shts	A2	Clock 51 - Skeleton Clock	
Not to Scale Unless otherwise stated		All dimensions in mm and (inches) 3rd Angle projection	Designed by: Brian Iaw www.woodenclocks.co.uk
		March 2023	